



Tallis Grove, SE7

£650,000

Excellent three double bedroom end of terraced house which our vendors extended to both the ground floor and first to provide excellent living accommodation.

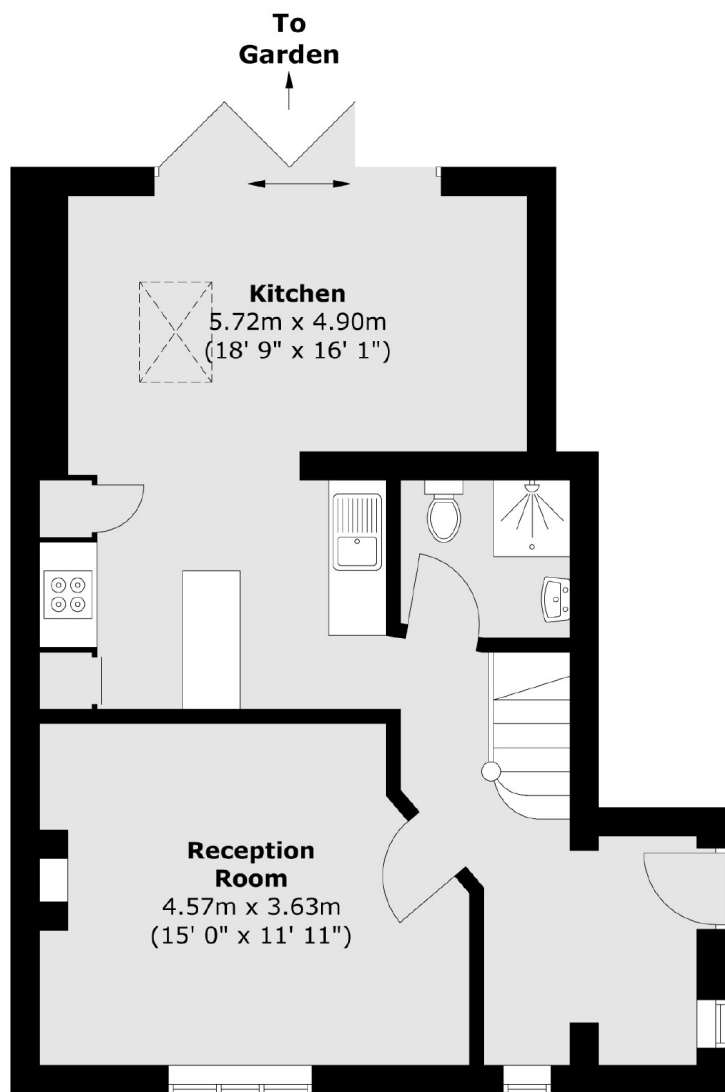
Situated in a quiet residential road and within catchment area of Sherington and Our Lady of Grace primary schools and an outstanding secondary school. Charlton station is within close proximity as are bus routes for both North Greenwich and the Elizabeth line.

Features

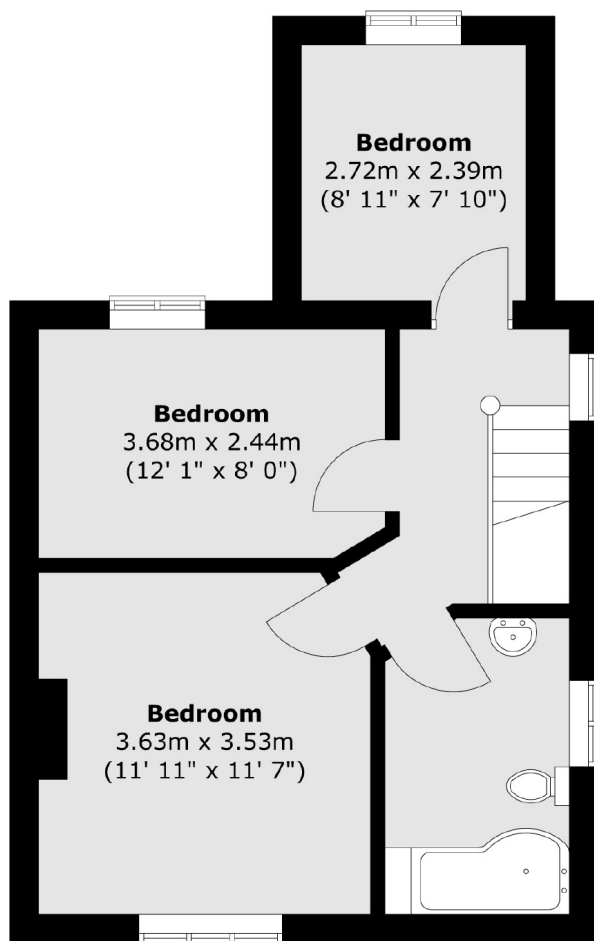
Three Double Bedroom Semi
Close To Charlton Station
Large Kitchen / Dining room
Two Bathrooms
Close To Station And Shops
Driveway For Two Cars

Tallis Grove, London, SE7

Ground Floor



First Floor



Total area (approx.) : 96.3 sq. m (1036 sq. ft)