



## Wyndcliff Road, SE7

### £450,000

OIEO £450,000

Stunning two double bedroom ground floor Edwardian maisonette, which would make a fantastic first time buy and should be viewed to appreciate the features that this property has to offer.

Accommodation comprises of a large reception room with solid wood floors and a period fireplace. There a bright and spacious kitchen / breakfast room with modern units and integrated appliances. There a double bedroom with views into the garden and a second single bedroom which is an ideal office or spare bedroom. The bathroom has been refurbished and is well appointed.

This maisonette benefits from a private garden to rear and has a patio with a lawned area.

### Features

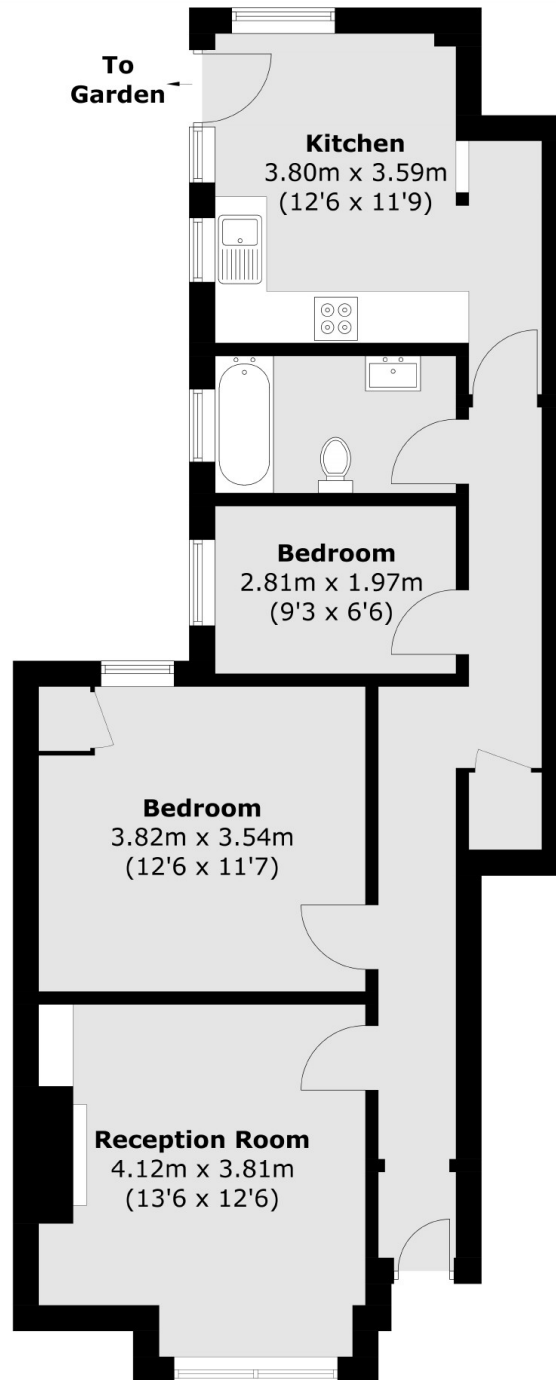
Stunning Garden Maisonette  
Two Bedrooms  
Sought After Road  
Easy Access To Stations  
Large Kitchen/ Diner  
Share Of Freehold



**Wyndcliff Road, SE7**



# Wyndcliff Road, London, SE7



Total area (approx.): 65.5 sq. m (705.0 sq. ft)