



Shooters Hill Road, SE18

£390,000

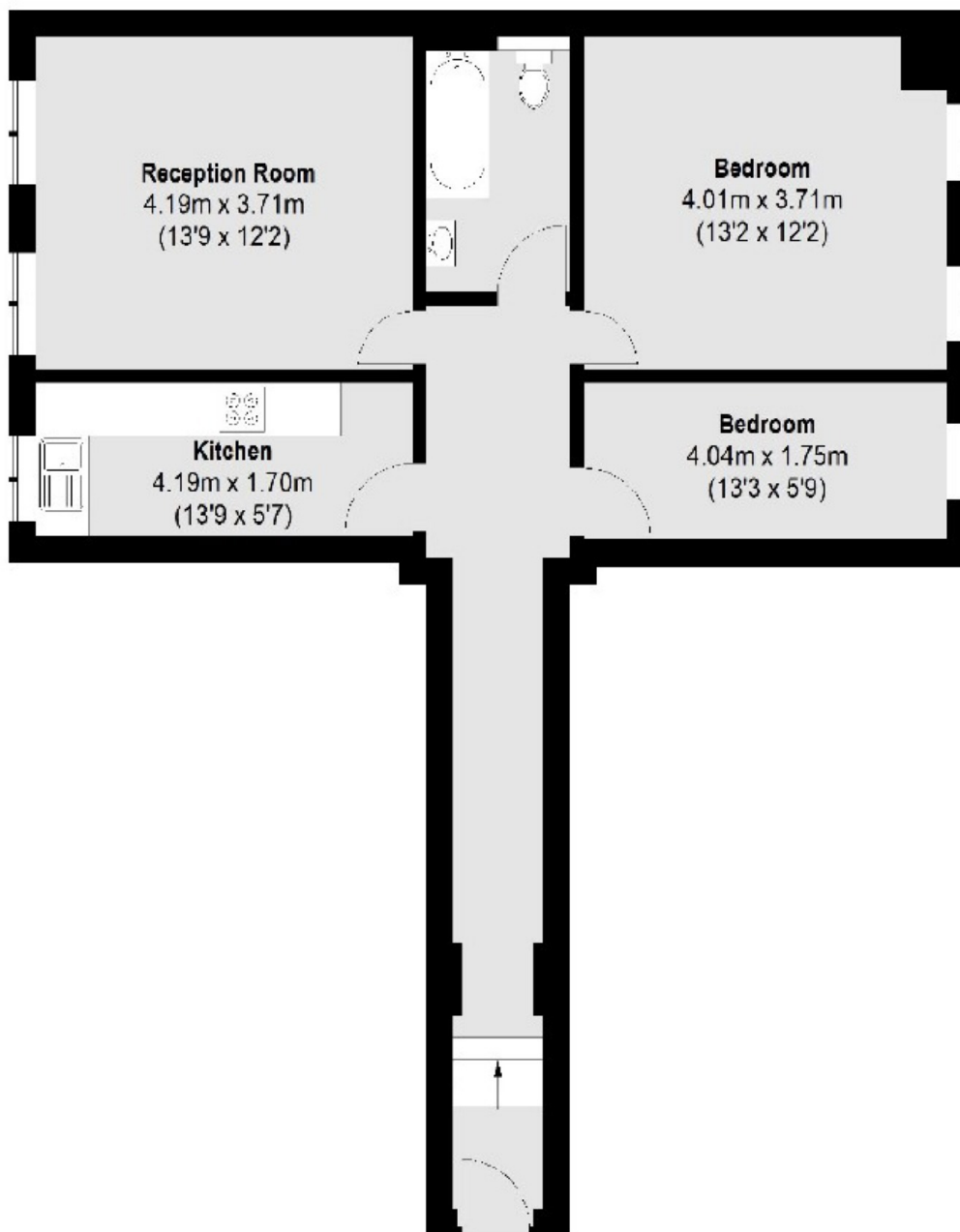
Situated on the second floor of this stunning conversion comes this spacious two bedroom apartment. Accommodation comprises of a large reception room with high ceilings and picture windows, a fitted kitchen and modern bathroom. There is a beautiful master bedroom and second large single bedroom. Royal Herbert Pavilions is a former military hospital which was converted in the 1990's and offers stunning and extensive grounds with tennis courts, barbeque areas and parking. There is an on-site gym and swimming pool and the buildings are beautifully maintained. Must be viewed to appreciate what this lovely flat and development have to offer.

Situated in the beautifully maintained Royal Herbert Pavilions, close to Woolwich DLR and Elizabeth Line and regular buses to North Greenwich Jubilee line and within easy access of Blackheath Village.

Features

- Stunning Two Bedroom Flat
- Beautifully Maintained Grounds
- Swimming Pool And Gym On-site
- Gated Development
- Parking
- End Of Chain

Shooters Hill Road, London, SE18



Second Floor

Total area (approx.): 64.36 sq. m (693 sq. ft)