



Shooters Hill Road, SE3

£395,000

Split level, two double bedroom, two bathroom Victorian converted flat with a private garden to rear and offered with no chain.

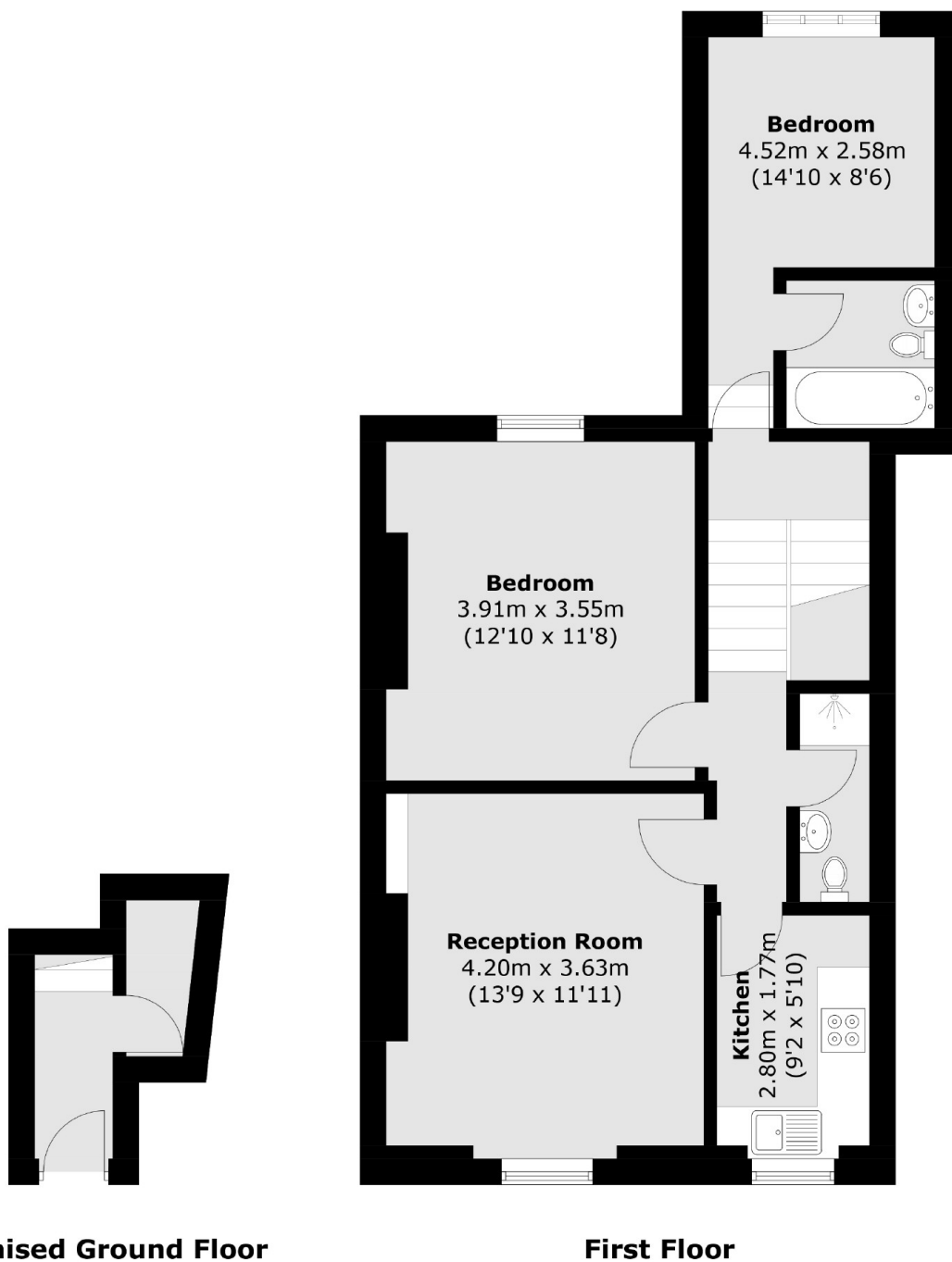
This spacious flat has a ground floor utility room with plumbing for washing machine and a space for a tumble dryer, it follows on with steps up to the first floor which has a bright spacious reception room, a fitted kitchen, double bedroom and a shower room. The second bedroom has an en-suite bathroom. There is private garden to rear, which has access from the side of the building.

Situated close to Blackheath Royal Standard for it's shops, cafés and bus routes, within a mile of Westcombe Park Station and a bus ride away from Blackheath Village. The property is close Greenwich Park and Blackheath.

Features

- Two Double Bedrooms
- Two Bathrooms
- Close To The Heath
- Private Garden
- Split level
- No Chain

Shooters Hill Road, London, SE3



Total area (approx.): 61.6 sq. m (663.0 sq. ft)