



Lyveden Road, SE3

£700,000

This beautifully appointed two double bedroom house must be viewed to appreciate the quality of the fittings, light and space that it has to offer.

Features to note include solid wood herringbone floors to the ground floor, a newly fitted shower room and cloakroom, double glazed wood sash windows and a solid timber door to front.

Situated in Rectory Fields, which is a much sought after conservation area. Close to Blackheath Royal Standard for its shops, cafés and amenities and to Westcombe Park Station, buses to North Greenwich and the Elizabeth line. The property sits within catchment area of sought after primary schools and an outstanding secondary school.

Features

- Stunning Extended Cottage
- Large Kitchen
- Downstairs Cloakroom
- Beautifully Appointed Shower
- South Facing Terrace
- Excellent For Transport



Lyveden Road, SE3

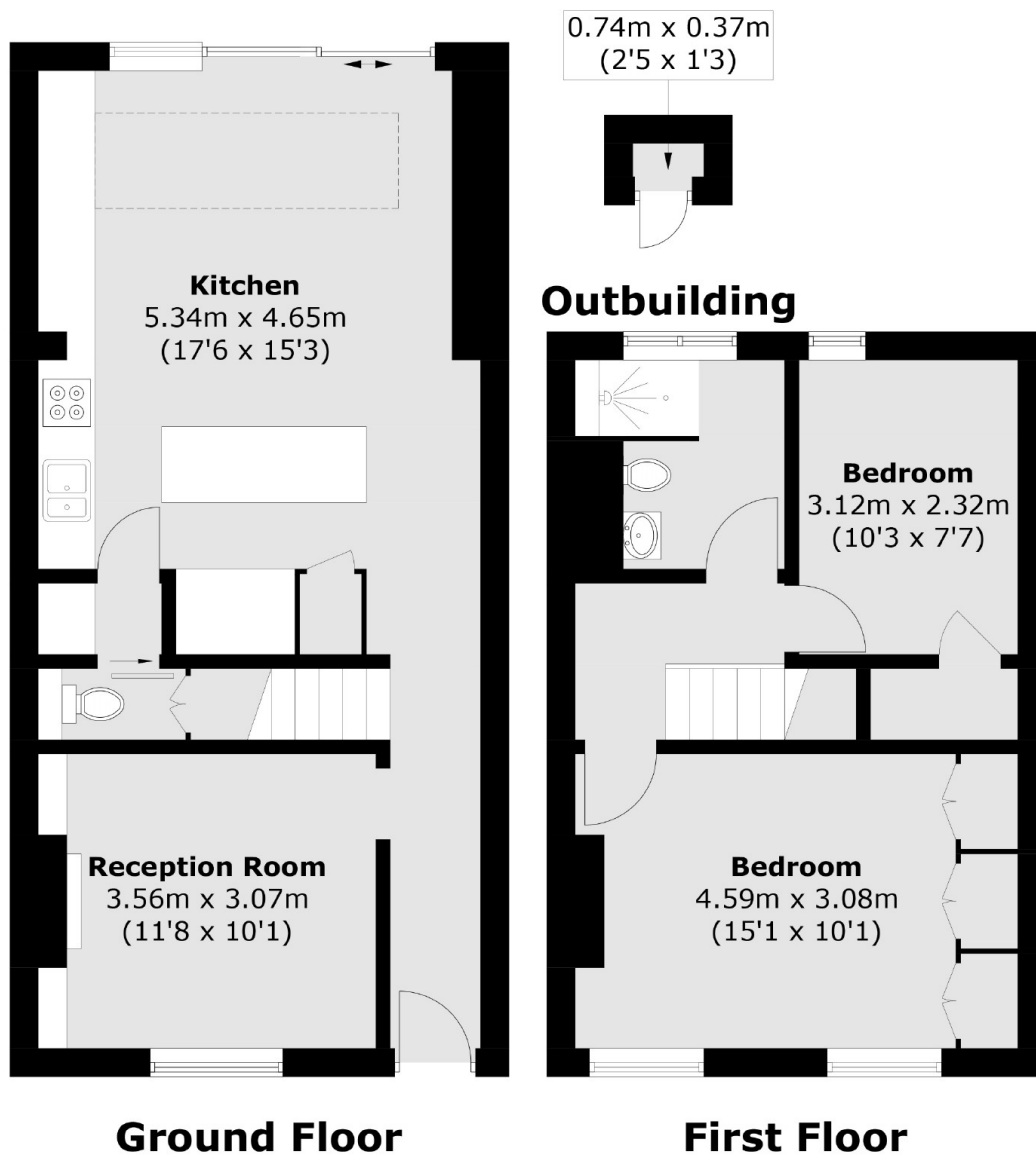
Accommodation comprises of a front reception room with a wood burning fire and bespoke fitted units to the alcoves.

The property has been extended to the rear to provide a stunning kitchen / breakfast room with herringbone solid wood floors, fully integrated appliances, an island unit for extra storage and a separate utility space with plumbing for the washing machine and space for a tumble dryer, this then leads to a ground floor cloakroom which is beautifully appointed.

Upstairs are two double bedrooms, the master with floor to ceiling built in wardrobes and a contemporary shower room with a fully tiled walk in shower. The courtyard garden is south facing, landscaped and has a brick shed for storage.



Lyveden Road, London, SE3



Total area (approx.): 81.0 sq. m (871.8 sq. ft)
Outbuilding (approx.): 0.3 sq. m (3.2 sq. ft)