



Royal Herbert Pavilions, SE18

£367,500

Two double bedroom first floor conversion flat situated within stunning communal grounds which offer tennis courts, large lawned open space and has a gym with swimming pool and sauna, there is also a residence bar. This spacious apartment has high ceilings, large windows and offers excellent light throughout. This property comes with residence and visitor parking. Offered with no chain and an ideal first time buy or investment purchase.

Situated in a gated development close to Woolwich Arsenal for the Elizabeth Line and DLR, plus overhead trains to Charing Cross, London Bridge and Cannon Street.

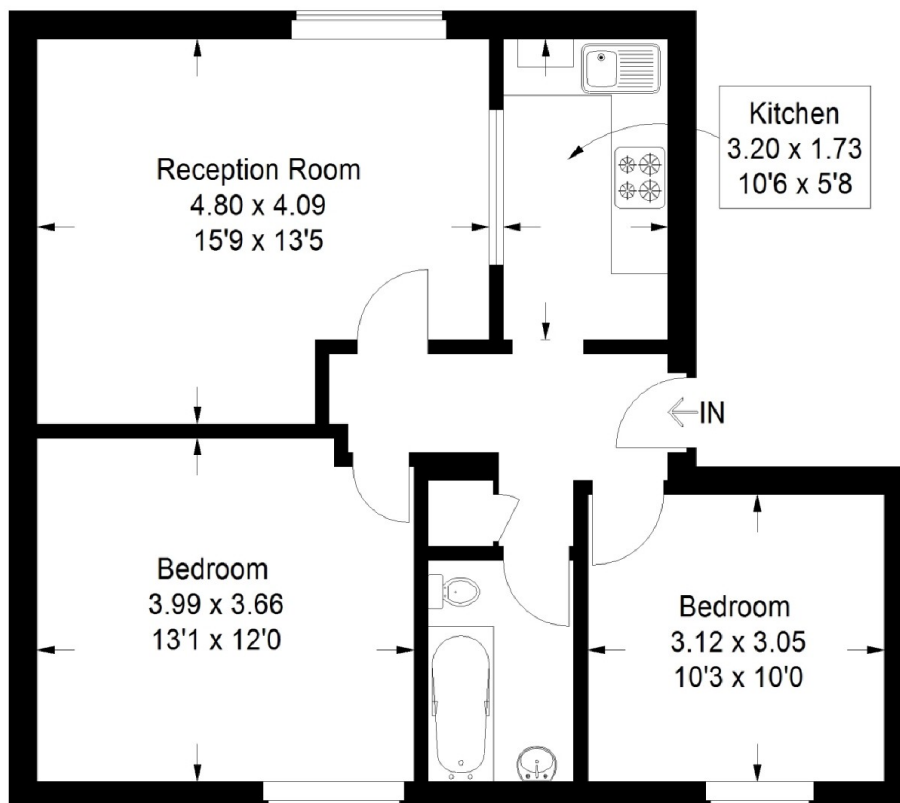
Features

- Two Double Bedrooms
- Grade Two Listed Development
- No Chain
- Swimming Pool And Gym
- Easy Access To Elizabeth Line
- No Chain

Royal Herbert Pavilions, London, SE18

Florence House, SE18

Approximate Gross Internal Area
60.1 sq m / 647 sq ft



First Floor

This plan is for layout guidance only. Not drawn to scale unless stated. Windows and door openings are approximate. Whilst every care is taken in the preparation of this plan, please check all dimensions, shapes and compass bearings before making any decisions reliant upon them. (ID232259)