



## Nadine Street, SE7

£650,000

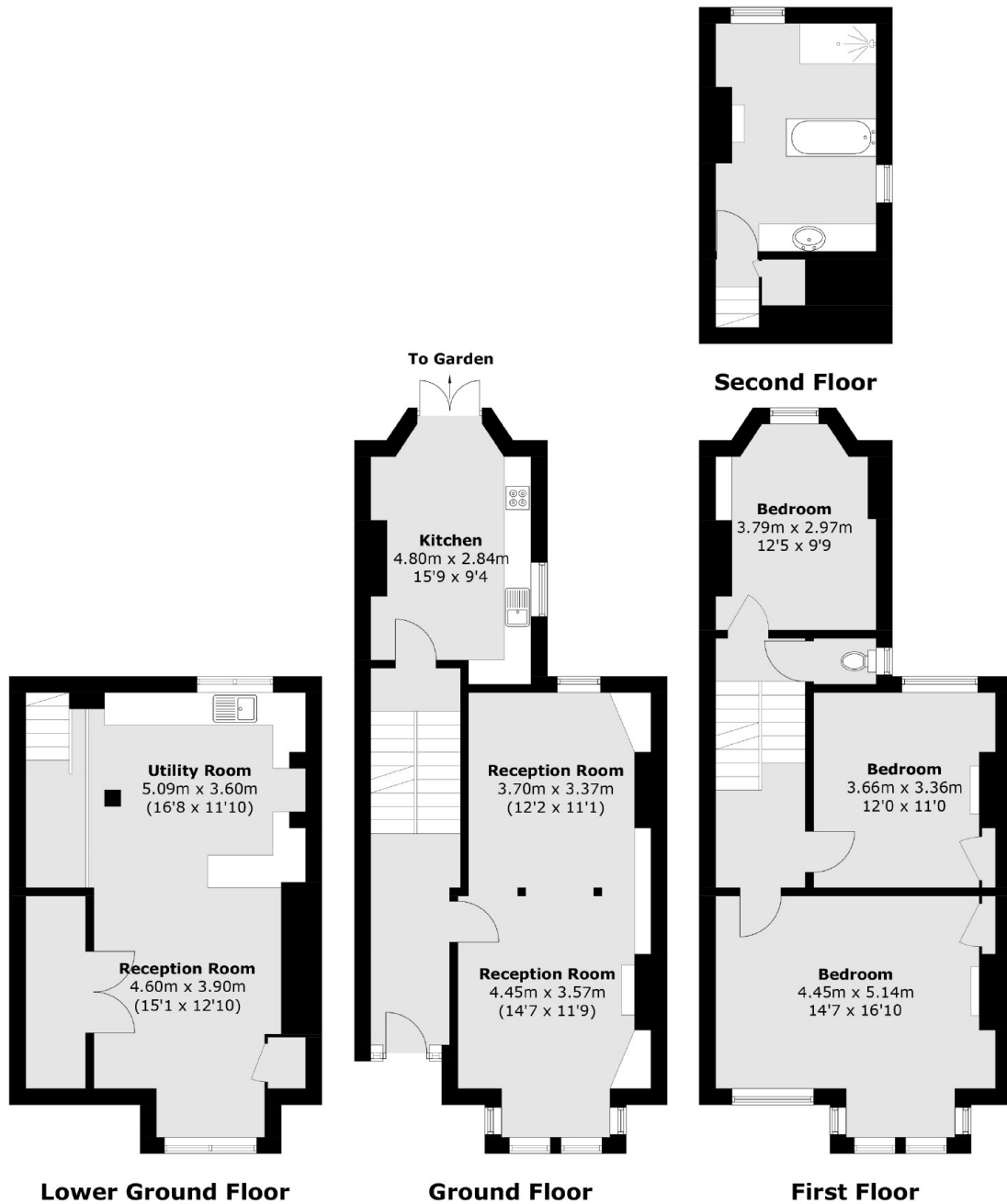
Spanning over six levels and measuring over 1700 square feet with high ceilings, period features and offering versatile accommodation comes this large Victorian four bedroom terraced house. The property backs onto woodland, and has lovely view across the trees and neighbouring properties. This property does require a full renovation but does have the benefit of double glazing and is offered with no chain. Must be viewed.

Situated on a quiet residential road, but within minutes of Charlton station for both overhead and City Thames link trains. The property is also close to Charlton Village for shops and amenities and to popular primary schools. There is easy access to the Elizabeth Line and the Jubilee line.

### Features

- Four Bedrooms
- Situated Over Six Floors
- No Chain
- Minutes From Charlton Station
- Period Features Throughout
- South Facing Garden

Nadine Street,  
London, SE7



Total area (approx.): 159.2 sq. m (1,713.6 sq. ft)