



Artillery Place, SE18

£450,000

Beautifully presented two double bedroom ground floor flat with direct access to a large balcony and views across a well maintained communal garden.

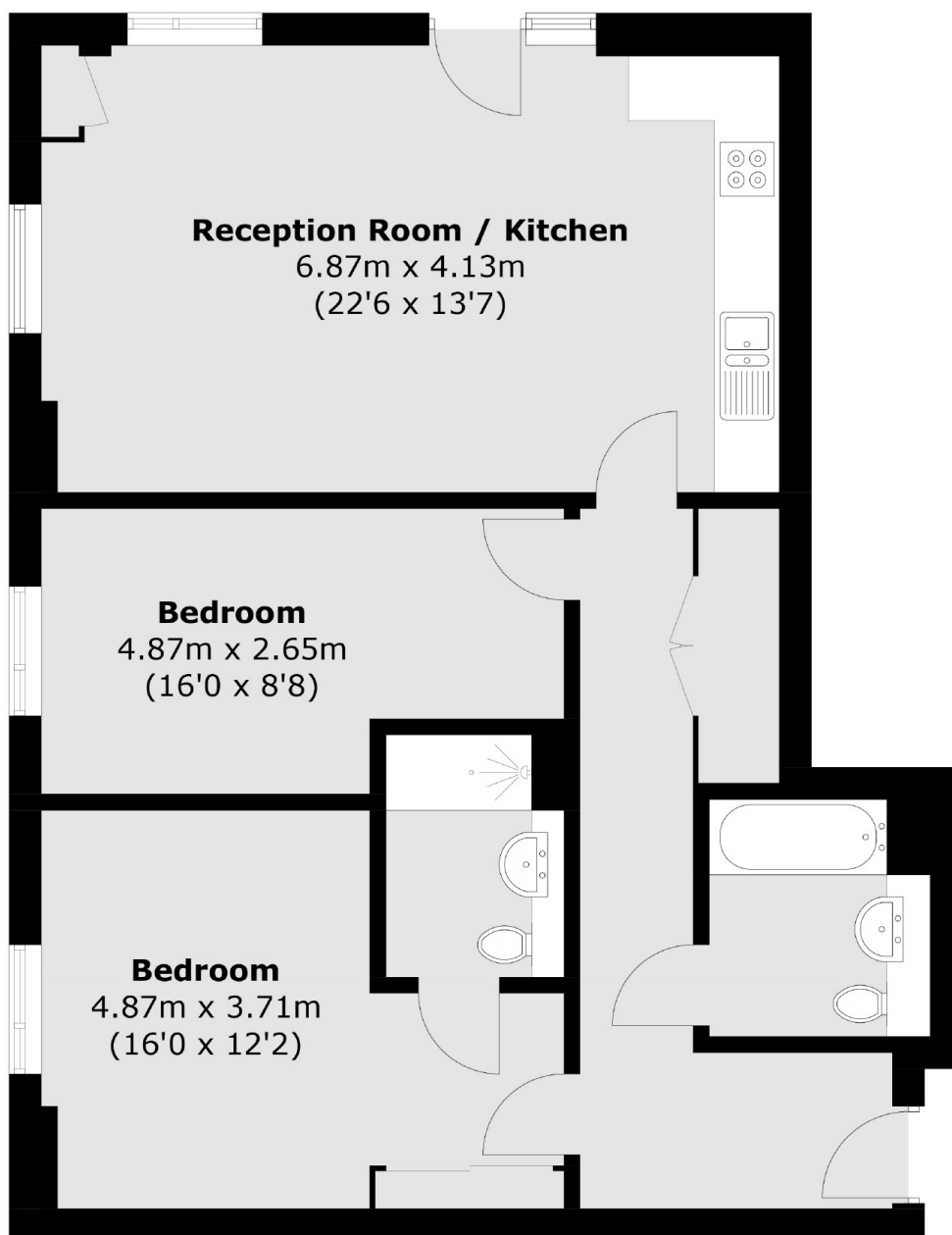
This property offers open plan living, with a fully fitted modern kitchen, space for dining and wooden floors. There are two double bedrooms, the master with a immaculate en-suite shower room and a separate family bathroom. The property is offered with an on-site gym and well kept communal grounds. Must be viewed.

Situated in an excellent position for Woolwich Arsenal DLR, over head and Elizabeth Line Stations and for the shops and amenities in Woolwich town centre.

Features

- Two Double Bedrooms
- Terrace/Balcony
- Two Bathrooms
- On-site gymnasium
- Close to Elizabeth Line and DLR
- Long Lease

Artillery Place, London, SE18



Total area (approx.): 79.0 sq. m (850.3 sq. ft)