



## Mycenae Road, SE3

£1,300,000

Exceptionally spacious, entirely remodelled and modernised to a high standard, this 1930's four bed terraced house offers well-proportioned accommodation over three floors, within a contemporary style. Higher than average ceiling heights and a widening angle of the space add to an abundance of natural light and an airy feel throughout.

Situated in a highly popular tree lined road in Westcombe Park's conservation area, within minutes' walk of the train station and bus routed for North Greenwich Jubilee line, the property sits within a catchment area of sought after nurseries, outstanding primary and secondary schools. Greenwich Park is within close proximity, as is Blackheath Royal standard for its shops and cafés.

### Features

Beautifully Presented Four Bed  
Minutes Walk To The Station  
Extended Large Kitchen  
EPC rating C  
Much Sought After Road  
No Chain



## Mycenae Road, SE3

The wide, inviting and luxurious entrance hall leads into a living space that is spacious and open, from reception to dining, flowing into an Italian designer kitchen with integrated appliances and quality granite work surfaces. There is also a convenient and stylish toilet suite on the ground floor.

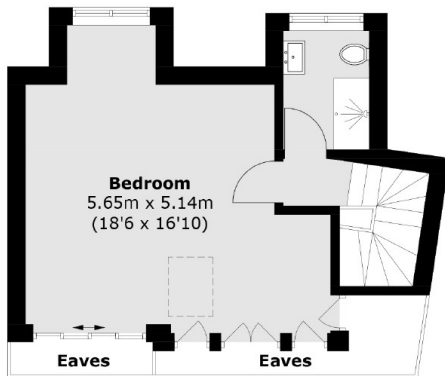
The first floor comprises two spacious bedrooms and a smaller double bedroom, serviced by a large fully tiled modern family bathroom with a jetted bathtub.

The second floor is home to a large master bedroom with plenty of eaves storage and an elegant shower room.

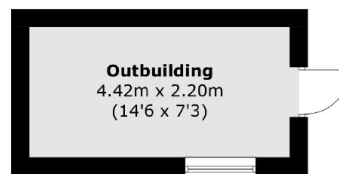
At the back there is a low maintenance garden with a patio area, a converted outbuilding that offers some additional space for storage or other needs, as well as a convenient rear access.



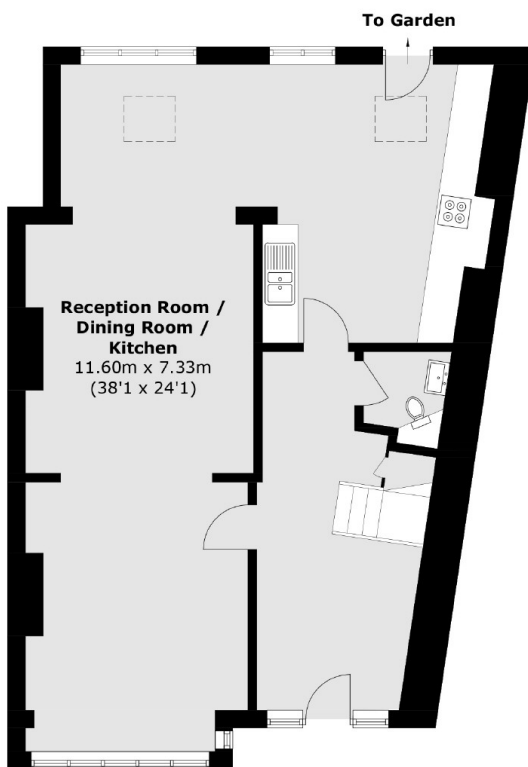
# Mycenae Road, London, SE3



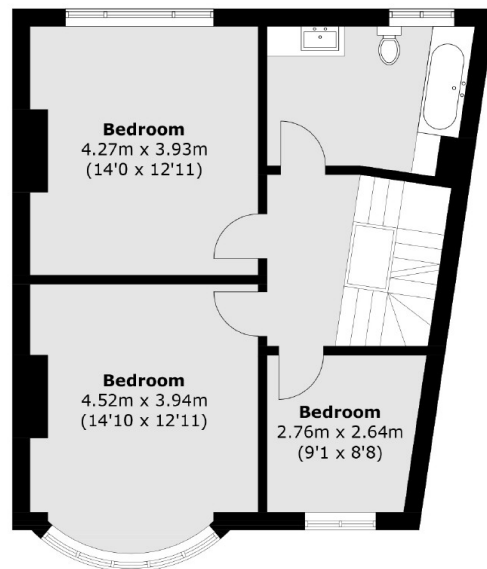
**Second Floor**



(Not Shown In Actual  
Location / Orientation)



**Ground Floor**



**First Floor**

Total area (approx.): 165.5 sq. m (1,781.4 sq. ft)  
(Excluding Eaves)

Outbuilding (approx.): 9.8 sq. m (105.5 sq. ft)