

Moy Lane, SE18

£425,000

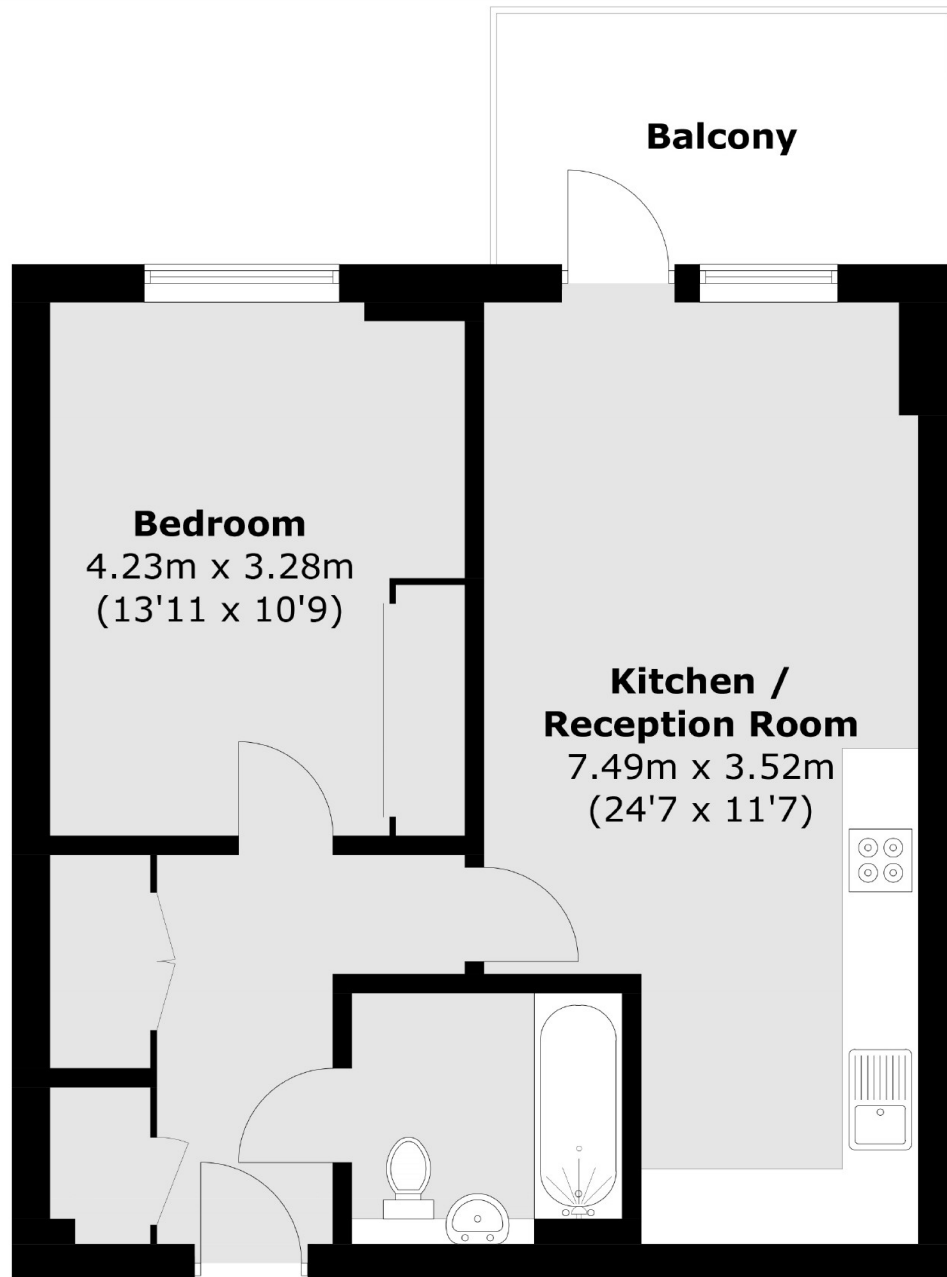
Bright and spacious one bedroom top floor apartment which offers on site concierge, open plan living and is in an excellent position for transport. Accommodation comprises of a large reception area with wood effect floors, french doors to a South Facing Balcony and open plan to a fully fitted high spec kitchen. There is a double bedroom with views and a large and immaculate bathroom. There is ample storage and a separate utility room with plumbing for a washing machine. This comes with an allocated parking space. Should be viewed.

Situated in a quiet residential development minutes to the centre of Woolwich for the DLR and over head station plus all the benefits of the town centre. The Elizabeth line is within close proximity and the property is 15 minutes to Canary Wharf and 25 minutes to Liverpool street door to door.

Features

- Large One Bedroom Apartment
- South Facing Balcony
- Excellent Location For Shops
- Minutes To Woolwich Arsenal
- Allocated Parking Space
- No Chain

Moy Lane, London, SE18



Total area (approx.): 51.8 sq. m (557.6 sq. ft)
Balcony (approx.): 7.2 sq. m (77.5 sq. ft)