



## Little Heath, SE7

£999,995

Beautiful semi-detached Victorian Villa with five large bedrooms and period features throughout. It must be viewed to appreciate the space and accommodation that this excellent family home has to offer.

Located opposite Maryon Wilson Park and situated in an excellent position for short bus routes to the Elizabeth Line and Charlton Station. Charlton Village is close by for its shops and amenities and both Blackheath and Woolwich are easily accessible.

### Features

- Five Double Bedrooms
- Beautiful Family Home
- Large South Facing Garden
- Driveway For Four Cars
- Two Bathrooms
- Excellent For Transport
- Semi-detached

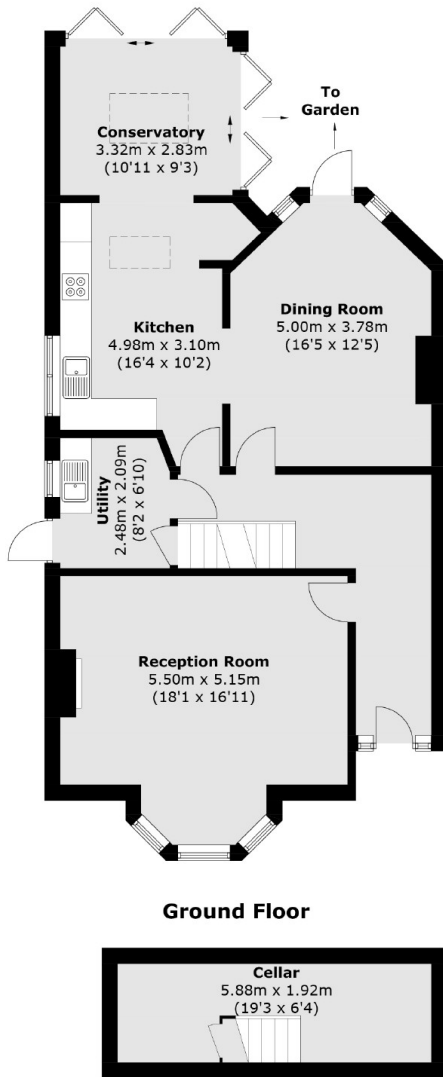


## Little Heath, SE7

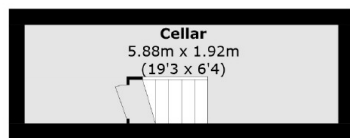
On the ground floor is a large and impressive reception room with wood floors and a feature fireplace, a second reception which could be used as a formal dining room or family room and an extended kitchen which has been fully fitted and has bi-folding doors to the rear that open fully onto the garden. There is a separate utility room and access to a large cellar. The first floor has three spacious bedrooms, one with a large, modern Jack and Jill bathroom. There is also a separate family shower room. The top floor has two double bedrooms and with some reconfiguration could also accommodate another bathroom or shower room. The driveway to front can hold up to four cars and the large rear garden is south facing and has access to the side.



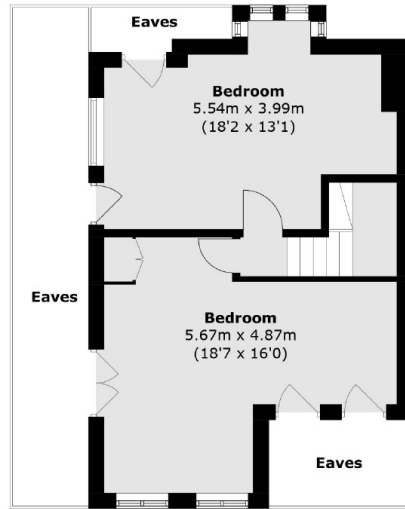
# Little Heath, London, SE7



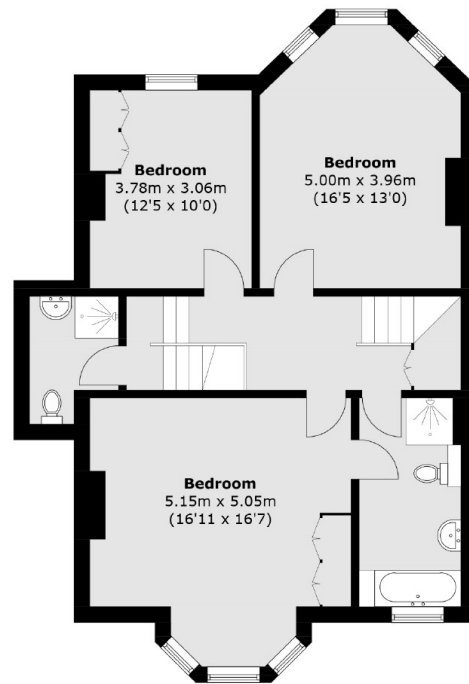
**Ground Floor**



**Cellar**



**Second Floor**



**First Floor**

Total area (approx.): 223.1 sq. m (2,401.4 sq. ft)  
(Including Cellar / Excluding Eaves)