



Kinveachy Gardens, SE7

£650,000

Three bedroom Edwardian terraced house which offers excellent space, light and potential to extend subject to planning permission.

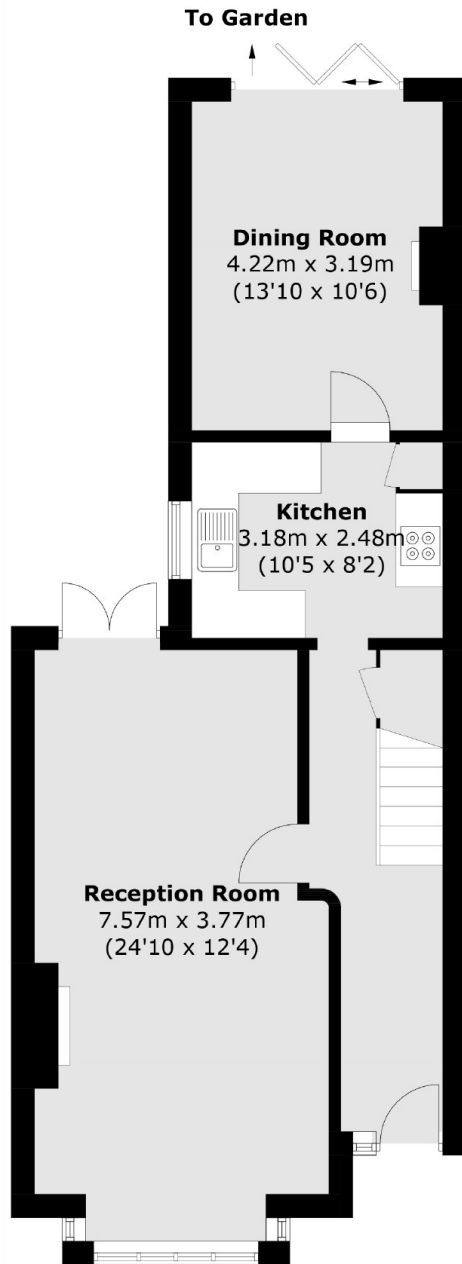
Accommodation comprises of a large through reception room with original floorboards and a period fireplace.

Situated on a quiet and popular residential road, within easy access to Woolwich Arsenal for the Elizabeth Line and close to Charlton Station. There are popular primary schools in close proximity and Maryon Wilson deer park is a few minutes walk away.

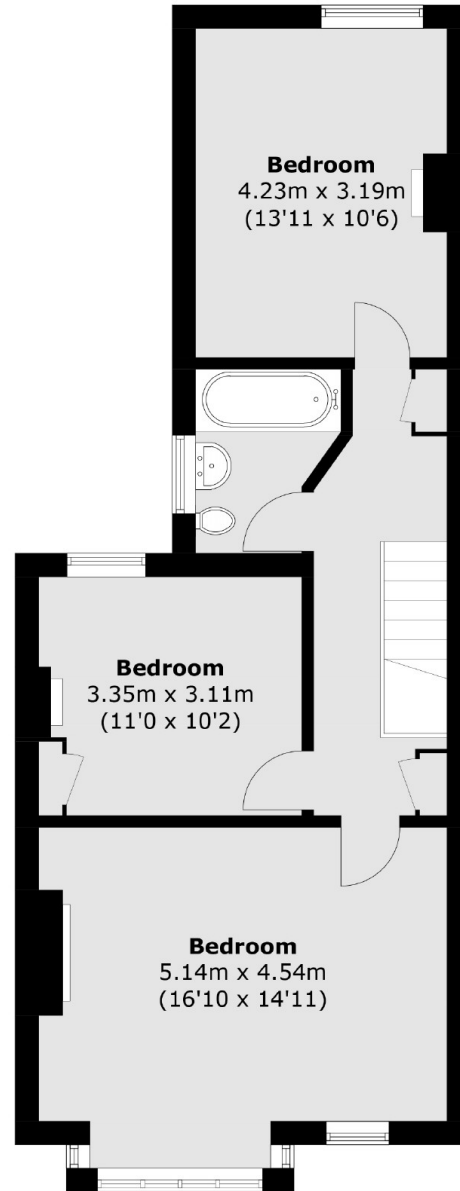
Features

- Three Bedroom Terraced House
- Quiet And Popular Road
- Offered With No Chain
- Period Features Throughout
- Large Rear Garden
- Close To Transport Links

Kinveachy Gardens, London, SE7



Ground Floor



First Floor

Total area (approx.): 119.3 sq. m (1,284.2 sq. ft)