



Gallon Close, SE7

£249,000

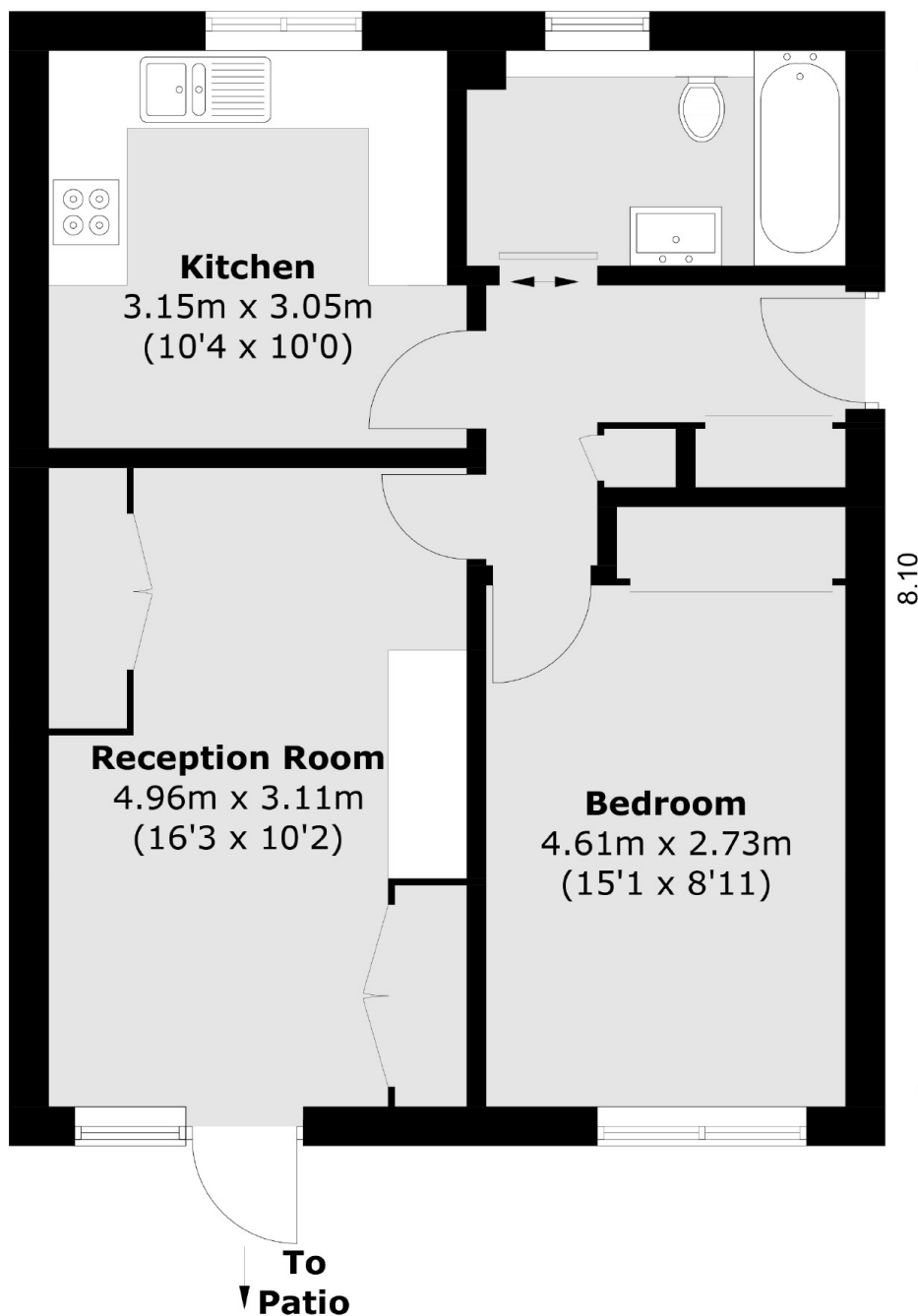
One bedroom ground floor flat offered with it's own private terrace and in good order throughout. All the rooms are well proportioned, with a fitted kitchen and modern bathroom, a reception room with wooden floors and a double bedroom. The property has plenty of storage throughout and there is permit parking available. Would make an excellent first time buy or investment purchase.

Situated minutes from Charlton Station and to bus routes for both the Elizabeth Line and North Greenwich Jubilee Line. There are shops and superstores within 1/4 of a mile and the property is close to Greenwich and Blackheath.

Features

One Bedroom Garden Flat
Close To Charlton Station
Close To Shops And
Superstores
Private Terrace
Good Order Throughout
Chain Free

Gallon Close, London, SE7



Total area (approx.): 49.7 sq. m (535.0 sq. ft)