



Reynolds Place, SE3

£635,000

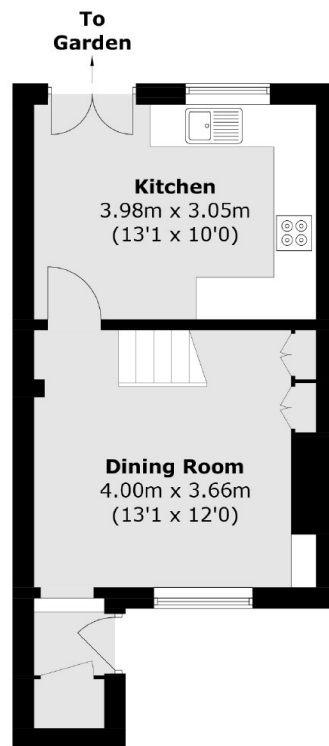
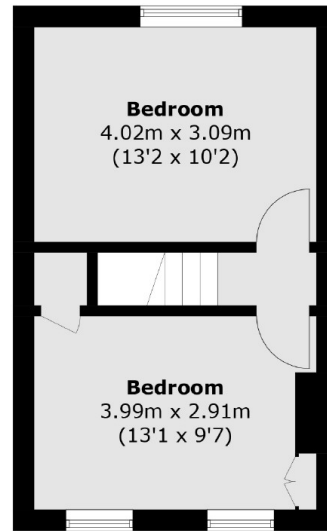
Pretty two/ three bedroom brick fronted terraced house which offers versatile living space and is well presented throughout. The property is neutrally decorated and there are plenty of period features, spacious rooms and a large rear garden. This property has had previous planning permission for a single storey extension. Offered with no chain.

Situated in a much sought after road, close to the shops, cafés and amenities at Blackheath Royal Standard and within catchment area of Leigh Academy and two outstanding primary schools. Westcombe Park Station is in close proximity and there are regular buses to North Greenwich for the Jubilee line.

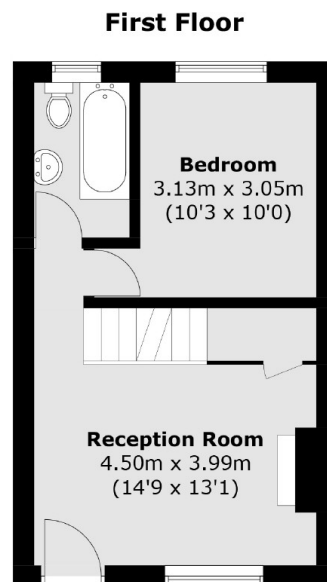
Features

Sought After Road
Three Good Sized Bedrooms
Period Features Throughout
Close To Shops And Transport
In Good Order Throughout
No Chain

Reynolds Place, London, SE3



Lower Ground Floor



Ground Floor

Total area (approx.): 84.6 sq. m (910.6 sq. ft)