



Cantwell Road, SE18

£280,000

Excellent two double bedroom ground floor flat with direct access to a large and well kept South facing rear garden. In good order throughout this spacious flat has the benefit of being offered with no chain and would make an excellent first time buy or investment purchase.

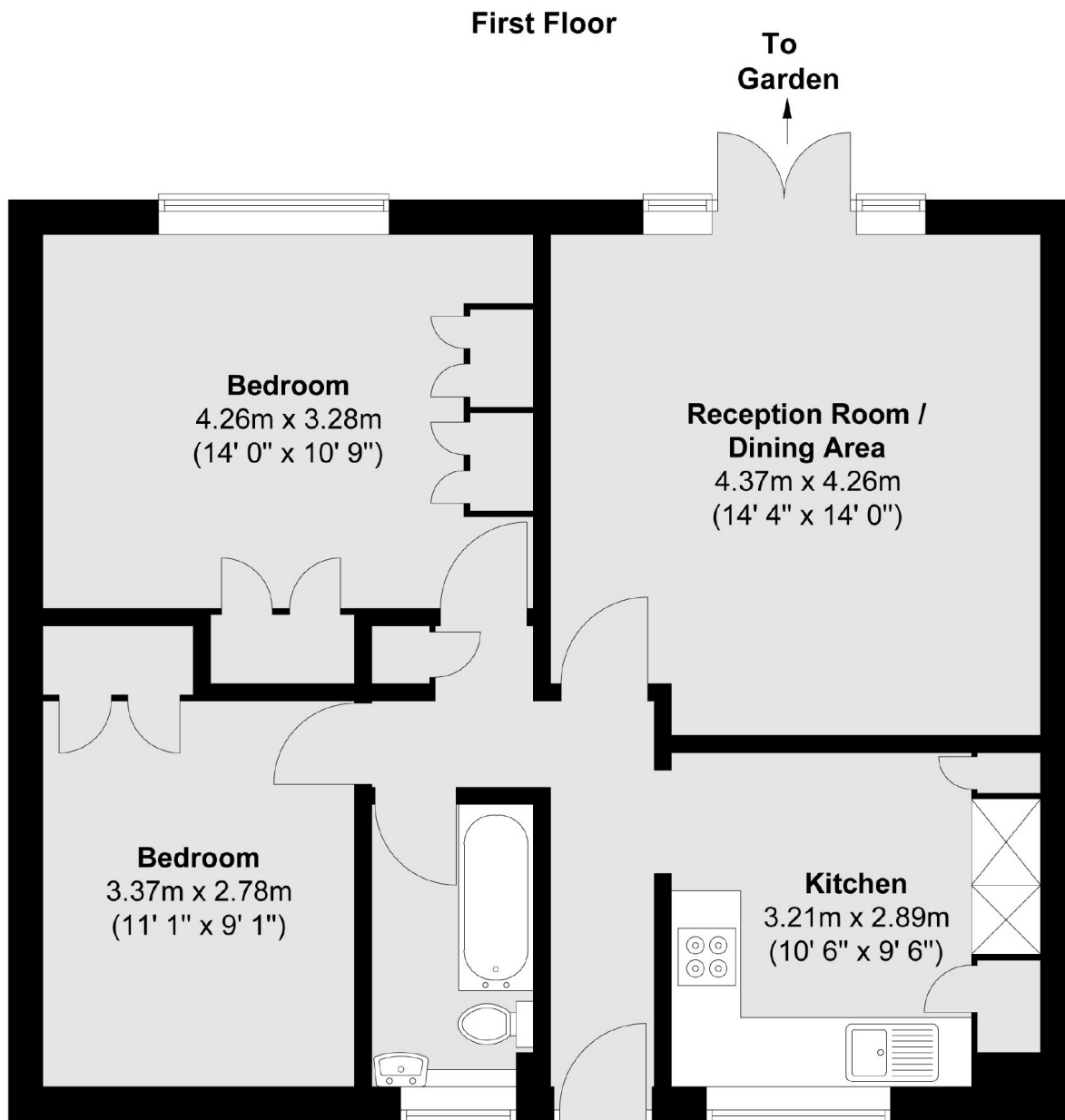
There is a modern fitted kitchen with built in appliances and bathroom, a large reception room with direct access to the garden, and two double bedrooms. Close to outstanding schools a great purchase family's and couples alike, must be viewed.

Situated on a popular road on the Shooters Hill Slopes, close to popular primary schools and within easy access of Woolwich for the DLR, Elizabeth Line and rail services into Central London and Kent.

Features

- Private Garden
- Two Double Bedrooms
- Parking
- Modern Kitchen
- Close To Transport Links
- No Chain

Cantwell Road, London, SE18



Total area (approx.) : 64.4 sq. m (693 sq. ft)