



Royal Herbert Pavilions, SE18

£500,000

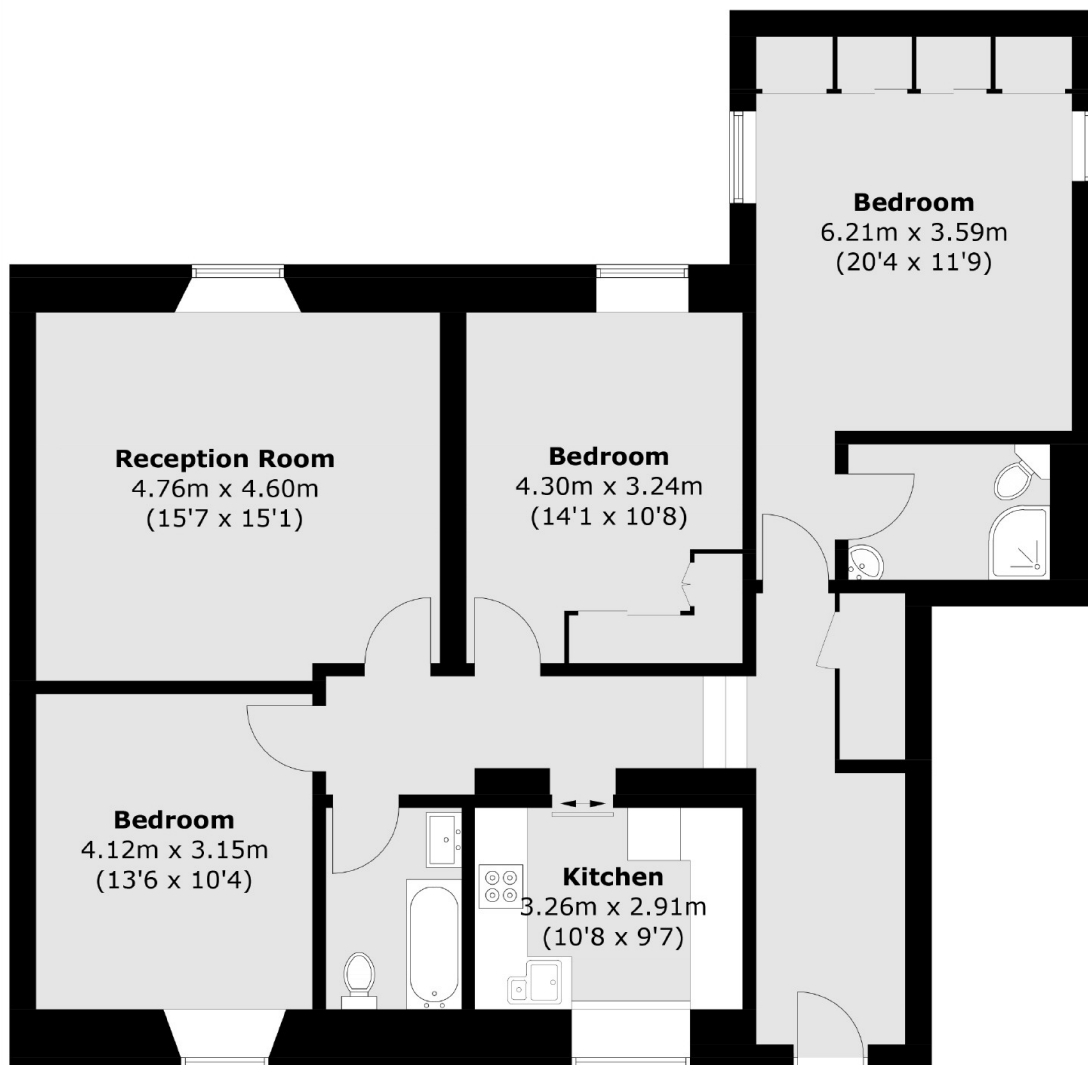
Lovely ground floor garden flat which must viewed to appreciate its charm and the space that it has to offer. There is a large reception with wooden floors and a feature fireplace, a fitted kitchen with integrated appliances and a large picture window. The stunning master bedroom is away from the living space and provides excellent storage space and an en-suite shower room. There are two further double bedrooms, one is currently used as a dining room and a well presented family bathroom.

Situated in a stunning gated development close to Woolwich Arsenal for the Elizabeth Line and DLR, plus overhead trains to Charing Cross, London Bridge and Cannon Street.

Features

- Three Double Bedrooms
- Two Bathrooms
- Beautifully Appointed
- Stunning Grounds
- Swimming Pool And Gym On Site
- No Chain

Royal Herbert Pavilions, London, SE18



Ground Floor

Total area (approx.): 99.0 sq. m (1,065.6 sq. ft)