



Taylor
Wimpey

Latitude

The Quays, Barry Waterfront,
Barry, Vale of Glamorgan

A development of 2, 3 & 4 bedroom homes






Welcome to Latitude


Latitude is a delightful collection of new 2, 3 & 4 bedroom homes at the heart of the regeneration of Barry Island, a vibrant new community close to the seaside, the countryside and excellent transport links by road, rail and air.

The Quays will include a host of new local amenities for the area, including waterfront cafés and restaurants, shops including a large supermarket, a purpose built community facility, a hotel, a brand new primary school, plus new parks and green, open spaces.

Just 8 miles away are the many attractions of Cardiff, with its excellent shopping, world-class arts, music and entertainment events, and International sport of all kinds. Regular trains run to Cardiff from Barry station, and the M4 (J33) is 9 miles away. For journeys further afield, Cardiff International Airport is under 5 miles away, offering domestic and European flights.

4 bedroom homes

 **The Oakham**
4 bedroom home
Plots: 87, 88, 89, 90, 93, 94, 95, 96, 99, 100, 101, 102, 109, 110, 111 & 112

 **The Ashbury**
4 bedroom home
Plots: 2, 10, 15, 32, 33, 35, 36, 38, 39, 41, 42, 44, 45, 48, 104, 105, 106 & 107

3 bedroom homes

 **The Ashton G**
3 bedroom home
Plots: 3, 11, 14, 17, 21, 31, 34, 37, 40, 43, 46, 47, 66, 72, 121 & 127

 **The Denford**
3 bedroom home
Plots: 27, 28, 29, 54, 55, 56, 57, 81, 82, 83 & 84

 **The Earlsford**
3 bedroom home
Plots: 22, 26, 59, 60, 64, 74, 78 & 79

3 bedroom homes

 **The Easdale**
3 bedroom home
Plots: 1, 16, 53, 65, 73, 85, 120 & 128

 3 bedroom home
Plots: 49, 50, 51, 52, 114, 115, 116 & 117


2 bedroom homes

 **The Appleford**
2 bedroom home
Plots: 4, 7, 8, 12, 13, 23, 25, 30, 61, 63, 71, 75, 77, 91, 97, 98, 108 & 122

 **The Beckford**
2 bedroom home
Plots: 6, 24, 58, 62, 67, 70, 76, 80, 123 & 126

2 bedroom homes

 **The Belford**
2 bedroom home
Plots: 5, 9, 18, 19, 20, 68, 69, 86, 92, 103, 113, 124 & 125

 2 bedroom home
Plots: 118 & 119

*ah/lc Low cost homes
*ah/r Rented homes
▶ Garage Access

The Development Layout does not show details of gradients of land, boundary treatments, local authority street lighting or landscaping. It is our intention to build in accordance with this layout. However, there may be occasions when the house designs, boundaries, landscaping and positions of roads and footpaths change as the development proceeds. Please check the details of your chosen property with your Sales Executive prior to reservation. XTWAL595 / 64839 TWSW February 2021.



**Taylor
Wimpey**

facebook.com/taylorwimpey

taylorwimpey.co.uk

How to find us

From the M4

Leave the M4 at Junction 33 and follow the A4232 signposted Penarth. At Culverhouse Cross junction, take the A4050 signposted Barry, Cardiff Airport. Follow the A4050 Port Road into Barry. At the roundabout, take the first exit onto Barry Road and then turn right onto Buttrills Road. At the roundabout, take the third exit onto Gladstone Road/A4055 then at the roundabout take the second exit onto Gladstone Bridge. At the next roundabout take the second exit onto Ffordd Y Mileniwm. Continue on this road and the development will be on your right.

From Cardiff

From the city centre, take the A4160 Penarth Road. At the junction, take the A4055 signposted Dinas Powys, Barry. At the roundabout, take the first exit and then go through four roundabouts. Continue on this road and the development will be on your right.

Latitude

off Ffordd Y Mileniwm, Barry,
Vale of Glamorgan, CF62 5QN

Satnav postcode: CF62 5QN

Sales hotline

01446 500875

Taylor Wimpey South Wales

Building 2
Eastern Business Park
Wern Fawr Lane
St Mellons Cardiff
South Glamorgan
CF3 5EA

Regional Office: 02920 534 700



With a carefully considered layout, the Easdale is a wonderful 3 bedroom home.

The kitchen/dining area is ideal for sit down meals with its French doors to the rear garden and the separate living room is a welcoming space. The downstairs cloakroom adds a touch of convenience.

Upstairs the first floor is home to the three bedrooms, with two of the bedrooms featuring built-in wardrobes. The main bedroom has the added luxury of an en suite shower room, leaving the main bathroom to serve bedrooms 2 and 3.

First Floor

Main Bedroom

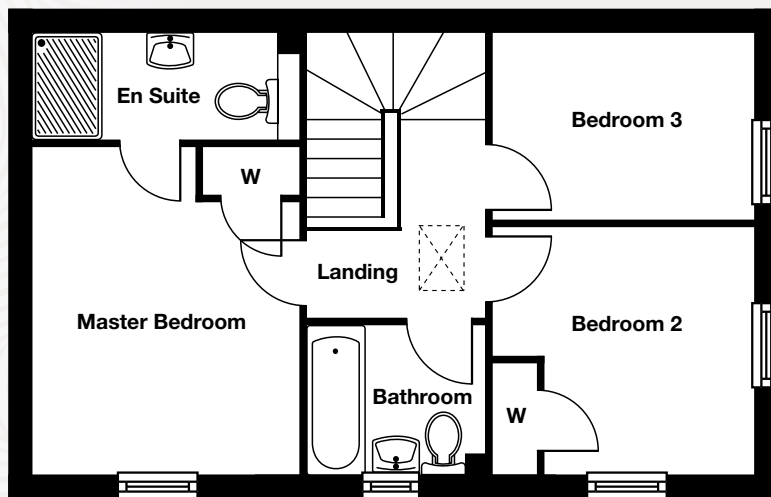
3.08m x 3.79m 10'1" x 12'5"

Bedroom 2

3.00m x 2.86m 9'10" x 9'5"

Bedroom 3

3.00m x 2.15m 9'10" x 7'1"



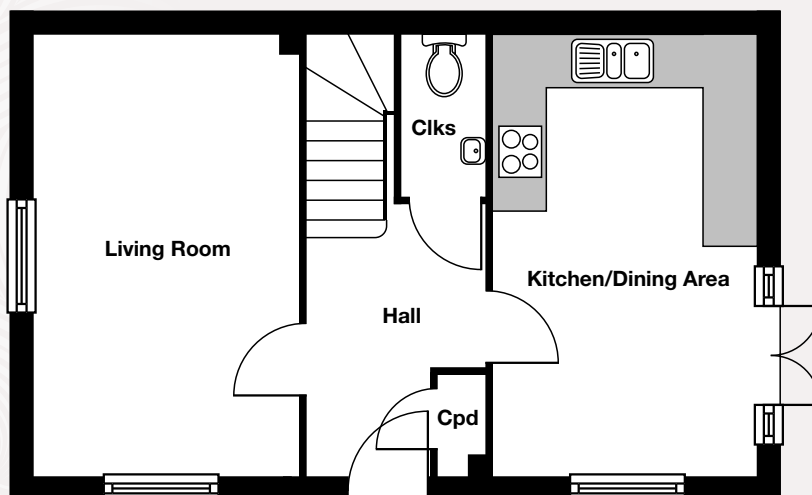
Ground Floor

Kitchen/Dining Area

2.93m x 5.10m 9'7" x 16'9"

Living Room

3.02m x 5.10m 9'11" x 16'9"



**Taylor
Wimpey**

Want to view one of our gorgeous new show homes?
Find a development and book an online appointment at:

taylorwimpey.co.uk



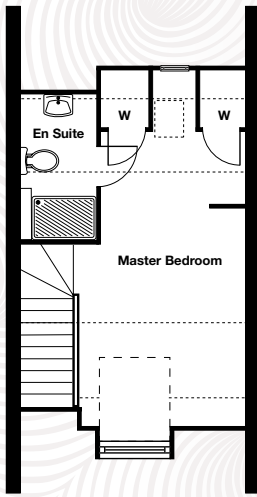
The Ashton G 3 bedroom home



Arranged over two and a half storeys, the Ashton G is ideal for small families or couples looking for a bit more space.

The kitchen/breakfast area is ideal for informal mealtimes, while the living room/dining area gives you space to both relax and sit down to dinner, with French doors to the rear garden. Touches of convenience include a downstairs cloakroom and under stairs storage cupboard.

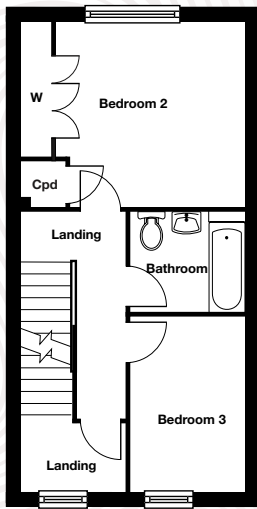
The first floor is home to two double bedrooms and the main bathroom, while the second floor is occupied entirely by the main bedroom and its en suite shower room, making it the perfect luxurious retreat. Two of the three bedrooms feature built-in wardrobes.



Second Floor

Main Bedroom

3.11m x 5.98m 10'2" x 19'7"



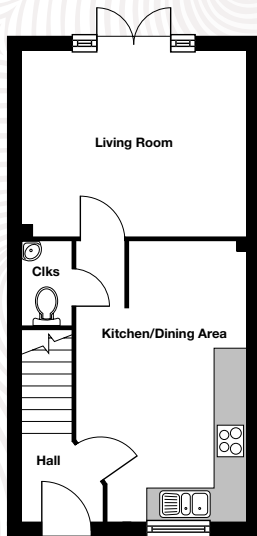
First Floor

Bedroom 2

4.23m x 5.52m 13'11" x 18'1"

Bedroom 3

2.20m x 3.27m 7'3" x 10'9"



Ground Floor

Kitchen/Dining Area

3.17m x 5.25m 10'5" x 17'3"

Living Room

4.23m x 3.51m 13'11" x 11'6"

Taylor Wimpey

Want to view one of our gorgeous new show homes?
Find a development and book an online appointment at:

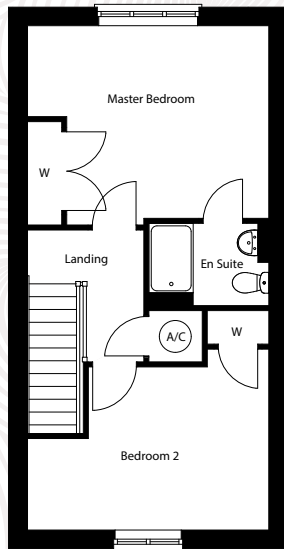
taylorwimpey.co.uk



With accommodation across three storeys, the Ashbury is a superb 4 bedroom home.

You can enjoy your start to the day in the kitchen/breakfast area, while the living room/dining area with French doors to the rear garden is perfect for unwinding or entertaining guests. Practical additions come in the form of a downstairs cloakroom and under stairs storage cupboard.

A double and single bedroom can be found on the first floor, along with the main bathroom. Up again to the second floor which is home to two double bedrooms, the main of which features an en suite shower room. Two of the bedrooms feature built-in wardrobes.



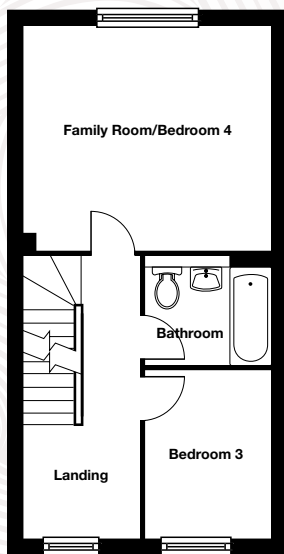
Second Floor

Main Bedroom

4.23m x 3.34m 13'11" x 10'11"

Bedroom 2

4.23m x 2.87m 13'11" x 9'5"



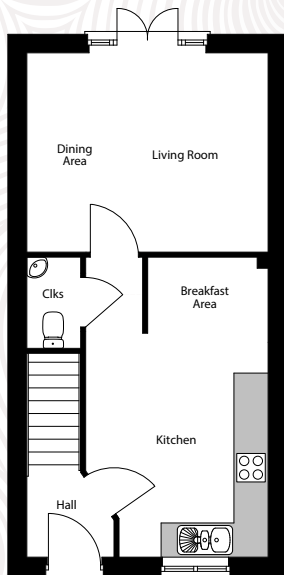
First Floor

Bedroom 3

2.17m x 3.29m 7'1" x 10'10"

Family Room/Bedroom 4

4.23m x 3.50m 13'11" x 11'6"



Ground Floor

Kitchen/Breakfast Area

3.20m x 5.25m 10'6" x 17'3"

Living Room/Dining Area

4.23m x 3.50m 13'11" x 11'6"

Taylor Wimpey

Want to view one of our gorgeous new show homes?
Find a development and book an online appointment at:

taylorwimpey.co.uk

* Windows for Plots 33, 44 & 45

The floor plans depict a typical layout of this house type. For exact plot specification, details of external and internal finishes, dimensions and floor plan differences consult your Sales Executive.
All dimensions are + or - 50mm and floor plans are not shown to scale. XTWAL595/September 2014.

Taylor
Wimpey

Latitude – South Quay 2

Barry Waterfront, Vale of Glamorgan

A collection of 2, 3 and 4 bedroom homes



Welcome to

Latitude – South Quay 2

A delightful collection of new 2, 3 & 4 bedroom homes at the heart of the regeneration of Barry Island, a vibrant new community close to the seaside, the countryside and excellent transport links by road, rail and air.



Welcome to

Latitude – South Quay 2

Latitude will include a host of new local amenities for the area, including waterfront cafés and restaurants, shops including a large supermarket, a purpose built community facility, a hotel, a brand new primary school, plus new parks and green, open spaces.

Just 8 miles away are the many attractions of Cardiff, with its excellent shopping, world-class arts, music and entertainment events, and International sport of all kinds. Regular trains run to Cardiff from Barry station, and the M4 (J33) is 9 miles away. For journeys further afield, Cardiff International Airport is under 5 miles away, offering domestic and European flights.

The Development Layout does not show details of gradients of land, boundary treatments, local authority street lighting or landscaping. It is our intention to build in accordance with this layout. However, there may be occasions when the house designs, boundaries, landscaping and positions of roads and footpaths change as the development proceeds. Please check the details of your chosen property with your Sales Executive prior to reservation. 52482 TWSW December 2019.

4 bedroom homes

The Ashbury
4 bedroom home
Plots: 244, 245, 247, 250, 253, 255, 259, 260, 262, 273, 275, 276, 280, 311, 314, 320, 321, 331, 334, 341, 350, 356, 359, 364, 367, 377, 380, 385, 388, 395, 398, 403 & 406

The Oakham
4 bedroom home
Plots: 246, 248, 249, 251, 336, 337, 338, 339, 343, 344, 345, 346, 347 & 348

3 bedroom homes

The Alton G
3 bedroom home
Plots: 256, 257, 258, 261, 274, 277, 278, 279, 312, 313, 357, 358, 365, 366, 378, 379, 386, 387, 396, 397, 404 & 405

The Ashbourne
3 bedroom home
Plots: 252, 254, 330, 332, 333, 335, 340, 342, 349, 351, 352 & 353

The Easedale
3 bedroom home
Plots: 267, 268, 294, 319, 354, 372, 391 & 392

The Gosford
3 bedroom home
Plots: 263, 272, 281, 285, 289, 298, 302, 315, 317, 355, 360, 363, 376, 381, 384, 399 & 402

3 bedroom home
Plots: 290, 293, 303, 306, 307 & 371

2 bedroom homes

The Beckford
2 bedroom home
Plots: 264, 265, 266, 269, 270, 271, 282, 283, 284, 286, 287, 288, 295, 296, 297, 299, 300, 301, 316, 318, 361, 362, 373, 374, 375, 382, 383, 389, 390, 393, 394, 400 & 401

2 bedroom home
Plots: 291, 292, 304, 305, 308, 309, 310, 368, 369 & 370

2 bedroom apartments

2 bedroom home
Plots: 322, 323, 324, 325, 326, 327, 328 & 329

- ▶ Garage Access
- v Visitor Parking Space
- LE.A.P. Local Equipped Area of Play
- *ah/lc Low cost homes
- *ah/sr Rented homes

*Low cost/rented accommodation to be confirmed by your Sales Executive. These plots may be subject to change. Please ask our Sales Executive for details.





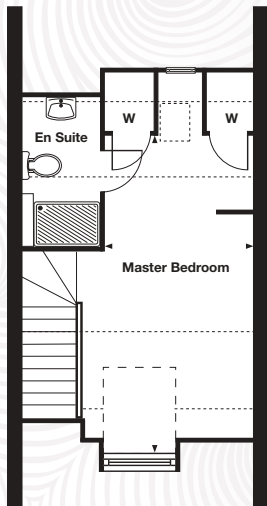
The Alton G 3 bedroom home



Cleverly laid out over 3 storeys, The Alton G offers flexible space ideal for today's lifestyles.

The ground floor features a fitted kitchen with dining area, and a separate living room with French doors to the rear garden. A downstairs cloakroom completes the picture.

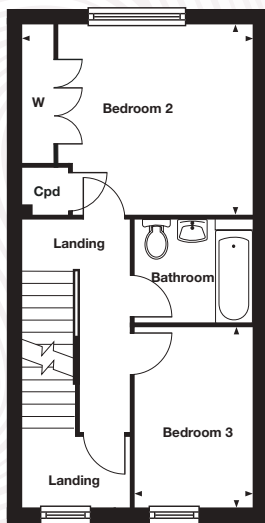
On the first floor you'll find two comfortable bedrooms and the family bathroom, while the top floor is dedicated to the stylish master bedroom with its en suite shower room.



Second Floor

Master Bedroom

5.98m x 2.72m 19'7" x 8'11"



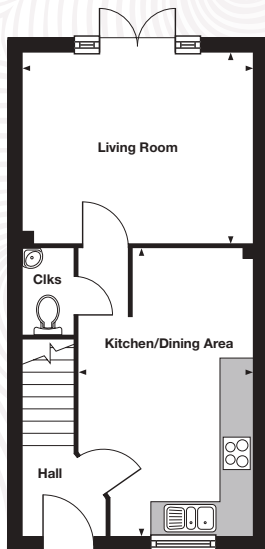
First Floor

Bedroom 2 (max.)

4.23m x 3.52m 13'11" x 11'7"

Bedroom 3

3.27m x 2.20m 10'9" x 7'3"



Ground Floor

Kitchen/Dining Area (max.)

5.25m x 3.17m 17'3" x 10'5"

Living Room

4.23m x 3.51m 13'11" x 11'6"

Taylor Wimpey

Want to view one of our gorgeous new show homes?
Find a development and book an online appointment at:

taylorwimpey.co.uk



**Taylor
Wimpey**

facebook.com/taylorwimpey
taylorwimpey.co.uk

How to find us

From the M4

Leave the M4 at Junction 33 and follow the A4232 signposted Penarth. At Culverhouse Cross Junction, take the A4050 signposted Barry, Cardiff Airport. Follow the A4050 Port Road into Barry. At the roundabout, take the first exit onto Barry Road and then turn right onto Buttrills Road. At the roundabout, take the third exit onto Gladstone Road/A4055 then at the roundabout take the second exit onto Gladstone Bridge. At the next roundabout take the second exit onto Ffordd Y Mileniwm. Continue on this road and the development will be on your right.

From Cardiff

From the city centre, take the A4160 Penarth Road. At the junction, take the A4055 signposted Dinas Powys, Barry. At the roundabout, take the first exit and then go through four roundabouts. Continue on this road and the development will be on your right.

Latitude – South Quay 2

off Ffordd Y Mileniwm
Barry, Vale of Glamorgan
CF62 5QN

Satnav postcode: CF62 5QN

Sales hotline 01446 500875

Taylor Wimpey South Wales
Building 2, Eastern Business Park
Wern Fawr Lane, St Mellons
Cardiff, CF3 5EA

Regional Office: 02920 534 700