

Crossley Mead

Cranford • Middlesex • TW5 9TY

PCM: £1,700 PCM



coopers
est 1986

This TWO DOUBLE BEDROOM, TWO BATHROOM ground floor apartment situated just minutes from Heathrow Airport. Close to local shops and within a few minutes drive from the M4 Motorway. Accommodation; Two bathrooms, Two Bedrooms (master with en-suite bathroom), Lounge with patio doors to garden, fitted kitchen. Benefits; Allocated parking, Gas central heating, Double glazing, Entry-phone system, Communal garden, Gated entrance. FURNISHED

Parking is available at an extra cost of £100pcm.

Local Amenities

Close to Heathrow

Great Transport Links

Allocated Parking at a cost of £100pcm

Fitted Kitchen

Gated Development

Gas Central Heating

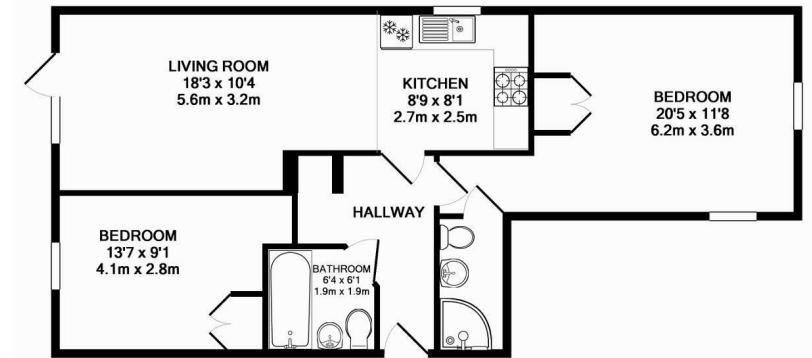
Easy Access to the Motorway

Two Bedrooms

Two Bathrooms

Available Date

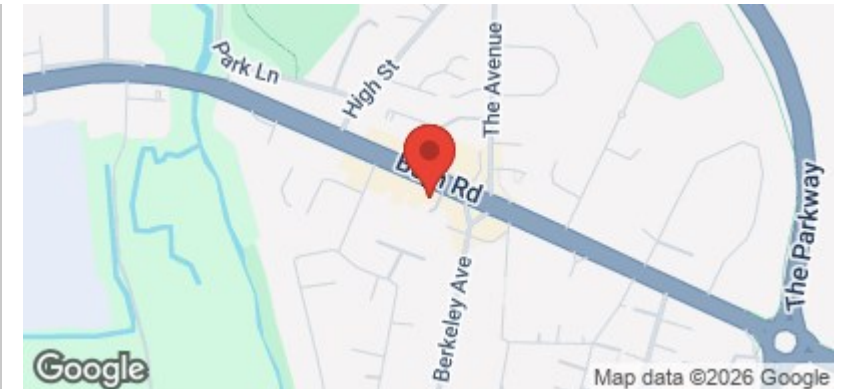
14th March 2025



TOTAL APPROX. FLOOR AREA 685 SQ.FT. (63.6 SQ.M.)

Whilst every attempt has been made to ensure the accuracy of the floor plan contained here, measurements of doors, windows, rooms and any other items are approximate and no responsibility is taken for any error, omission, or mis-statement. This plan is for illustrative purposes only and should be used as such by any prospective purchaser. The services, systems and appliances shown have not been tested and no guarantee as to their operability or efficiency can be given.

Made with Metropix ©2015



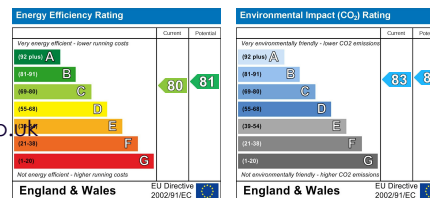
coopers
est 1986

01895 257 566

**1 Vine Street, Uxbridge,
Middlesex, UB8 1QE**

propertymanagement@coopersresidential.co.uk

CoopersResidential.co.uk



Important Notice: These particulars, whilst believed to be accurate are set out as a general outline only for guidance and do not constitute any part of an offer or contract. Intending purchasers should not rely on them as statements or representation of fact, but must satisfy themselves by inspection or otherwise has the authority to make or give any representation or warranty in respect of the property.