

# Kings Mill Way

Uxbridge • • UB9 4BT

PCM: £1,600 PCM



coopers  
est 1986

A Truly Stunning, Modern & Contemporary ONE BEDROOM Luxury apartment situated in the popular Kings Island Development close to Uxbridge High Street. A multitude of Bars, Restaurants and Shopping facilities on your doorstep. Accommodation; Bedroom with fitted wardrobes, Luxury bathroom, Large lounge, Fully fitted kitchen with appliances. Benefits; Allocated parking, Entry-phone system, Gas central heating, Double glazing. Furnished.

Walking Distance to Uxbridge Town Centre

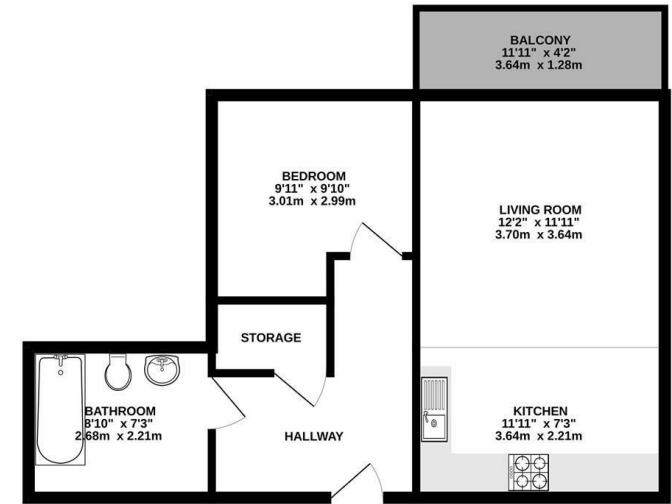
- Balcony
- Gated Development
- Fully Fitted Kitchen
- Concierge
- Close to A40/M40
- Well Presented
- Allocated Parking
- Modern Development
- Beautiful Views

### Available Date

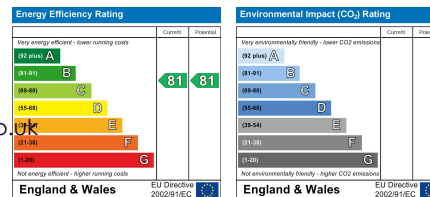
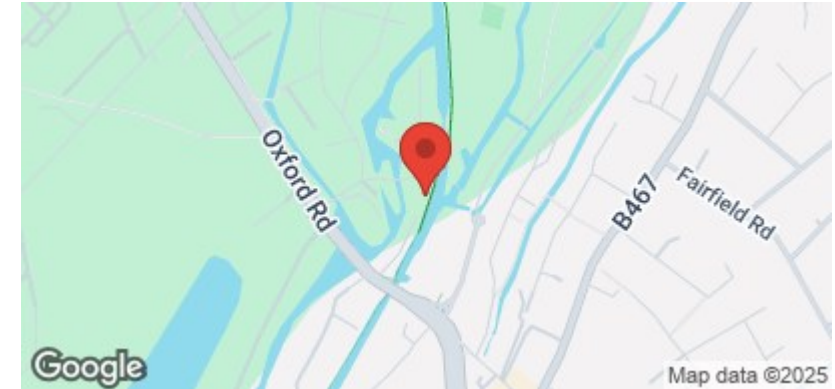
29th December 2025



GROUND FLOOR  
485 sq.ft. (45.1 sq.m.) approx.



TOTAL FLOOR AREA: 485 sq.ft. (45.1 sq.m.) approx.  
Whilst every attempt has been made to ensure the accuracy of the foregoing information, measurements of doors, windows, rooms and any other items are approximate and no responsibility is taken for any error, omission or misstatement. This plan is for illustrative purposes only and should be used as a guide by any prospective purchaser. The services, systems and appliances shown have not been tested and no guarantee as to their operation or efficiency can be given.  
Made with Metropix ©2025



Important Notice: These particulars, whilst believed to be accurate are set out as a general outline only for guidance and do not constitute any part of an offer or contract. Intending purchasers should not rely on them as statements or representation of fact, but must satisfy themselves by inspection or otherwise has the authority to make or give any representation or warranty in respect of the property.

**coopers**  
est 1986

01895 257 566

1 Vine Street, Uxbridge,  
Middlesex, UB8 1QE

propertymanagement@coopersresidential.co.uk

CoopersResidential.co.uk