

Blyth Road

Hayes • Middlesex • UB3 1FG

PCM: £2,200 PCM



coopers
est 1986

A stunning, luxury, modern apartment located in a prime location in Hayes. This beautiful apartment is just a stone's throw away from Hayes & Harlington Station offering direct access to London Paddington in under 20 minutes. Stockley Business Park & Heathrow Airport are also within easy reach.

The property itself comprises of; large entrance hallway, large open plan living area with balcony offering amazing views, fully fitted kitchen with appliances, master bedroom with ensuite, second double bedroom and family bathroom.

Unfurnished

Modern apartment

Two double bedrooms

Fully fitted kitchen with appliances

Moments From Hayes & Harlington Station

Fantastic location

Easy Reach To Stockley Business Park

Private balcony

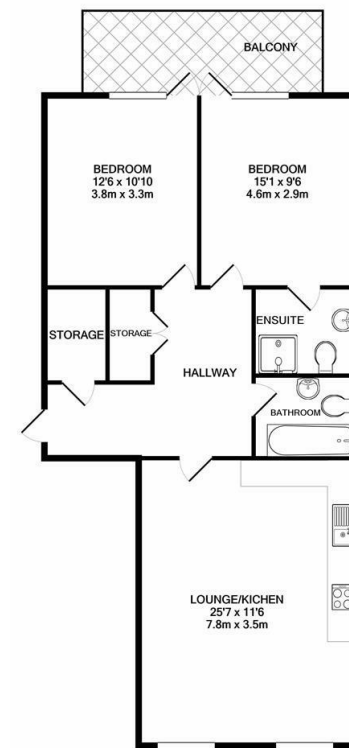
Close to Heathrow Airport

Great local amenities

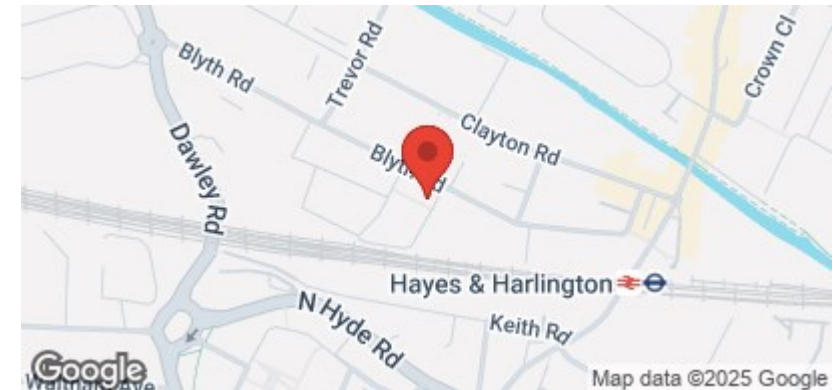
Ample storage space

Available Date

24th October 2025



Whilst every attempt has been made to ensure the accuracy of the floor plan contained here, measurements of doors, windows, rooms and any other items are approximate and no responsibility is taken for any error, omission, or mis-statement. This plan is for illustrative purposes only and should be used as such by any prospective purchaser. The services, systems and appliances shown have not been tested and no guarantee as to their operability or efficiency can be given.
Made with Metropix ©2021



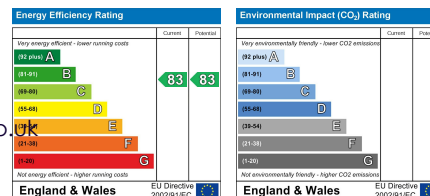
coopers
est 1986

01895 257 566

**1 Vine Street, Uxbridge,
Middlesex, UB8 1QE**

propertymanagement@coopersresidential.co.uk

CoopersResidential.co.uk



Important Notice: These particulars, whilst believed to be accurate are set out as a general outline only for guidance and do not constitute any part of an offer or contract. Intending purchasers should not rely on them as statements or representation of fact, but must satisfy themselves by inspection or otherwise has the authority to make or give any representation or warranty in respect of the property.