

Lexington House

West Drayton • Middlesex • UB7 9FJ

PCM: £1,400 PCM



coopers
est 1986



A modern ONE BEDROOM manhattan style luxury Apartment situated in a private development with 24 hour concierge and Gymnasium. Located within a short walk to West Drayton Train station and high street. Heathrow, The M4 and the M25 are just a few minutes drive.

Accommodation; One bedroom, lounge with doors leading to private terrace, Fully fitted kitchen with appliances. Benefits; Double glazing, Entry-phone system, Beautiful communal gardens, Allocated parking. FURNISHED

Close to West Drayton Station

Close to High Street

Allocated Parking

Close to Stockley Park

Close to Heathrow Airport

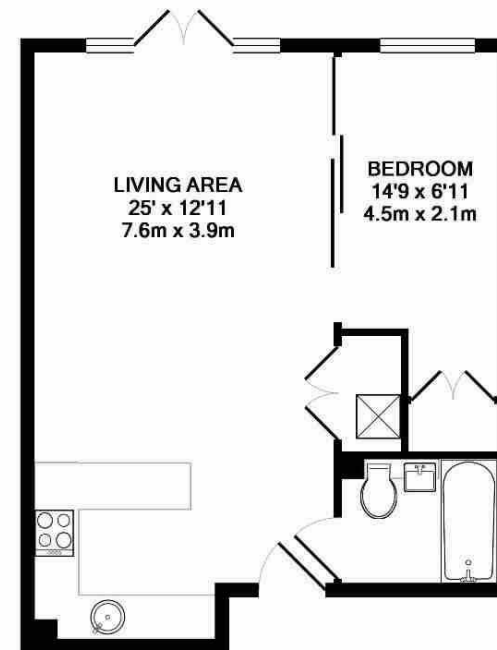
24 hour concierge

Gymnasium

Council Tax Band C

Lift Facility

Ample storage space



TOTAL APPROX. FLOOR AREA 468 SQ.FT. (43.5 SQ.M.)

Whilst every attempt has been made to ensure the accuracy of the floor plan contained here, measurements of doors, windows, rooms and any other items are approximate and no responsibility is taken for any error, omission, or mis-statement. This plan is for illustrative purposes only and should be used as such by any prospective purchaser. The services, systems and appliances shown have not been tested and no guarantee as to their operability or efficiency can be given.
Made with Metropix ©2014



Available Date

3rd July 2025

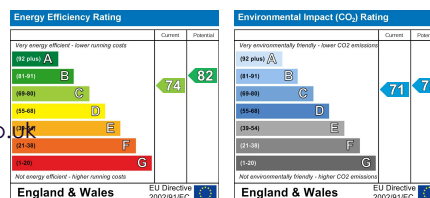
coopers
est 1986

01895 257 566

**1 Vine Street, Uxbridge,
Middlesex, UB8 1QE**

propertymanagement@coopersresidential.co.uk

CoopersResidential.co.uk



Important Notice: These particulars, whilst believed to be accurate are set out as a general outline only for guidance and do not constitute any part of an offer or contract. Intending purchasers should not rely on them as statements or representation of fact, but must satisfy themselves by inspection or otherwise has the authority to make or give any representation or warranty in respect of the property.