

# Ryeland Close

West Drayton • Middlesex • UB7 8AU

PCM: £1,000 PCM



coopers  
est 1986

This well kept ground floor studio apartment is located within close proximity of Hillingdon Hospital, Brunel University and Uxbridge Town Centre. This bright and spacious apartment offers a fitted kitchen, spacious three piece bathroom, a 16ft studio room which benefits from built in storage and entrance hallway. Benefits include, entry phone system & allocated parking.

FURNISHED

Council Tax Band B

Local amenities

Desirable location

Great local transport

Nearby to Uxbridge Town Centre

Ground floor apartment

Entry Phone System

Close to Stockley Park

Nearby to Hillingdon Hospital

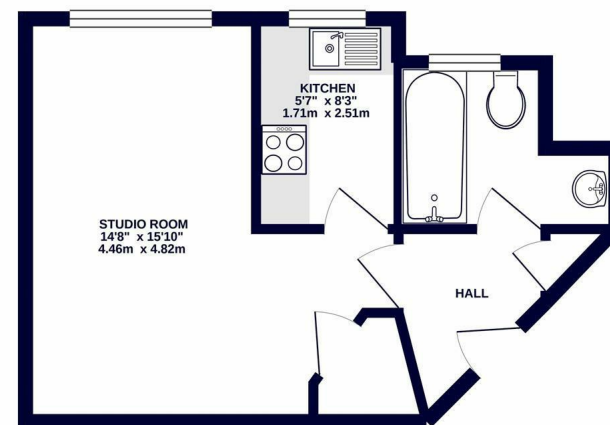
Furnished

**Available Date**

7th July 2025



GROUND FLOOR  
314 sq.ft. (29.2 sq.m.) approx.



TOTAL FLOOR AREA: 314 sq ft. (29.2 sq.m.) approx.  
Whilst every effort has been made to ensure the accuracy of the floorplan contained here, measurements of doors, windows, rooms and any other items are approximate and no responsibility is taken for any error, omission or mis-statement. This plan is for illustrative purposes only and should be used as such for any prospective purchaser. The services, systems and appliances shown here have not been tested and no guarantee as to their quantity or efficiency can be given.  
Made with Mapbox ©2025



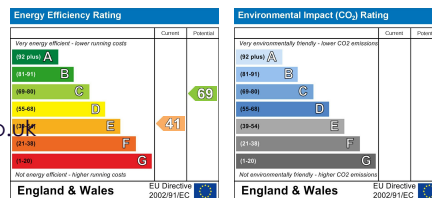
**coopers**  
est 1986

**01895 257 566**

**1 Vine Street, Uxbridge,  
Middlesex, UB8 1QE**

propertymanagement@coopersresidential.co.uk

**CoopersResidential.co.uk**



Important Notice: These particulars, whilst believed to be accurate are set out as a general outline only for guidance and do not constitute any part of an offer or contract. Intending purchasers should not rely on them as statements or representation of fact, but must satisfy themselves by inspection or otherwise has the authority to make or give any representation or warranty in respect of the property.