

Newcombe Rise

Yiewsley • • UB7 8QE

PCM: £1,250 PCM



coopers
est 1986

New to the market, a neat and well-presented ground floor, ONE BEDROOM apartment situated in a quiet cul-de-sac close to West Drayton High Street. Local shops, Restaurants and Bars are within a few minutes` walk.

Accommodation; One double bedroom, Bathroom, Lounge, Fully fitted kitchen with appliances. Benefits; Entry-phone system and two allocated parking spaces.

Unfurnished and available now.

Two Allocated Parking Spaces
Nearby to West Drayton High Street

Elizabeth Line

Unfurnished

EPC Rating C

Council Tax Band C

Local Amenities

Close to Hillingdon Hospital

Fully Fitted Kitchen with Appliances

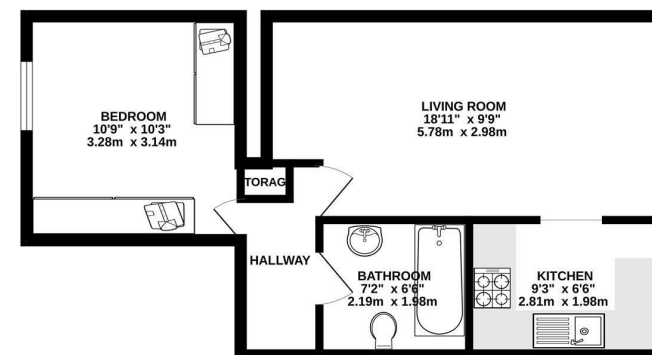
Quiet Location

Available Date

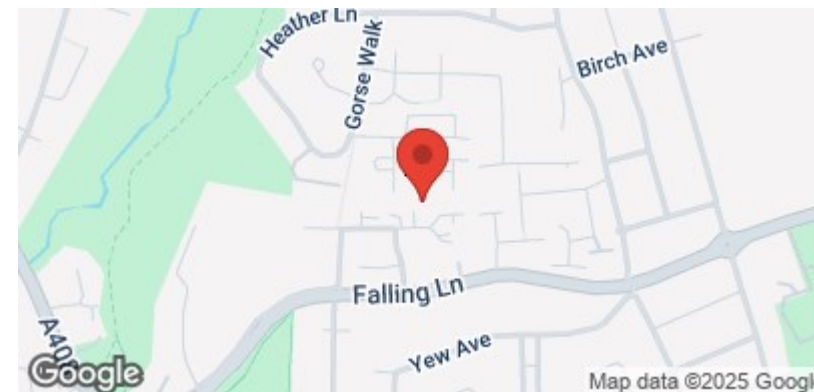
2nd May 2025



GROUND FLOOR
431 sq.ft. (40.0 sq.m.) approx.



TOTAL FLOOR AREA: 431 sq.ft. (40.0 sq.m.) approx.
Whilst every attempt has been made to ensure the accuracy of the floorplan contained herein, measurements of doors, windows, rooms and any other items are approximate and no responsibility is taken for any error, omission or mis-statement. This plan is for illustration purposes only and should be used as such by any prospective purchaser. The services, systems and appliances shown have not been tested and no guarantee as to their operation or efficiency can be given.
Made with Netplan (2025)



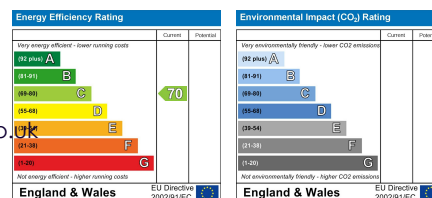
coopers
est 1986

01895 257 566

**1 Vine Street, Uxbridge,
Middlesex, UB8 1QE**

propertymanagement@coopersresidential.co.uk

CoopersResidential.co.uk



Important Notice: These particulars, whilst believed to be accurate are set out as a general outline only for guidance and do not constitute any part of an offer or contract. Intending purchasers should not rely on them as statements or representation of fact, but must satisfy themselves by inspection or otherwise has the authority to make or give any representation or warranty in respect of the property.