

Colham Road

Hillingdon • Middlesex • UB8 3WQ

PCM: £1,600 PCM



coopers
est 1986

GROUND FLOOR
673 sq.ft. (62.5 sq.m.) approx.

A lovely TWO DOUBLE BEDROOM apartment situated in a quiet spot close to Hillingdon Hospital and within easy reach of Uxbridge Town Centre.

Accommodation; Two double bedrooms, Modern Bathroom with underfloor heating, Large lounge, Fitted kitchen with appliances. Benefits; Double glazing, Residents parking, lovely communal grounds, Entry-phone system. FURNISHED

Fitted Kitchen

Double Glazing

Entry Phone System

EPC Rated D

Two Double Bedrooms

Allocated Parking Space

Walking Distance to Hillingdon Hospital

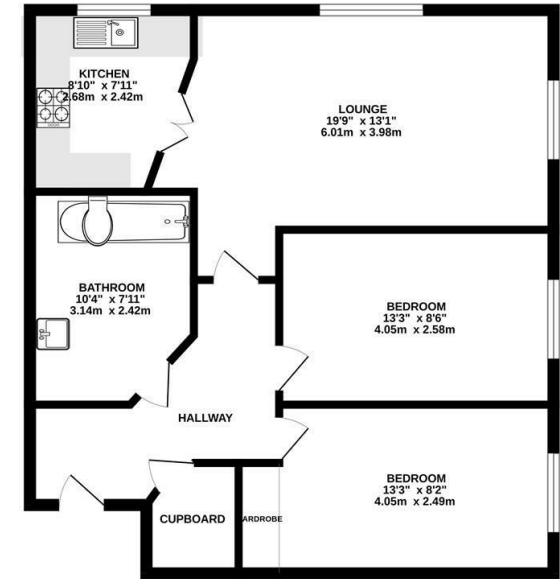
Great Storage Throughout

Easy Access to M25/M40

Furnished

Available Date

30th May 2025



TOTAL FLOOR AREA: 673 sq.ft. (62.5 sq.m.) approx.

While every attempt has been made to ensure the accuracy of the floorplan contained here, measurements of doors, windows, rooms and any other items are approximate and no responsibility is taken for any error, omission or misstatement. This plan is for illustrative purposes only and should be used as such by any prospective purchaser. The contract, systems and appliances shown have not been tested and no guarantee as to their operability or efficiency can be given.

Made with Metropix 12/2025



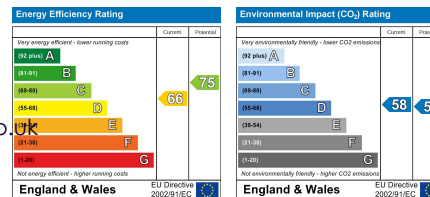
coopers
est 1986

01895 257 566

1 Vine Street, Uxbridge,
Middlesex, UB8 1QE

propertymanagement@coopersresidential.co.uk

CoopersResidential.co.uk



Important Notice: These particulars, whilst believed to be accurate are set out as a general outline only for guidance and do not constitute any part of an offer or contract. Intending purchasers should not rely on them as statements or representation of fact, but must satisfy themselves by inspection or otherwise has the authority to make or give any representation or warranty in respect of the property.