

Manor Waye

Uxbridge • Middlesex • UB8 2BQ

PCM: £2,100 PCM



coopers
est 1986

A well-presented three bedroom semi detached house close to Uxbridge town centre.

The property boasts three double bedrooms, good size kitchen with white goods, a 150ft garden, off road parking, ample storage space and gas central heating throughout. With a park round the corner, easy access to A40/M40/M25, and walking distance to local amenities.

Available April 2025 and Furnished

Semi detached house

Three Bedroom

Large Garden

Access to M40/M25/A40

Walking distance to Uxbridge Town Centre

Council Tax Band D

Furnished

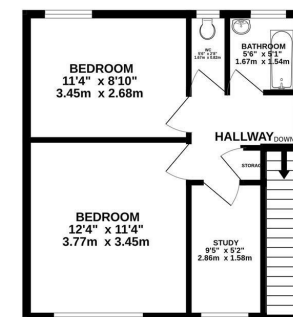
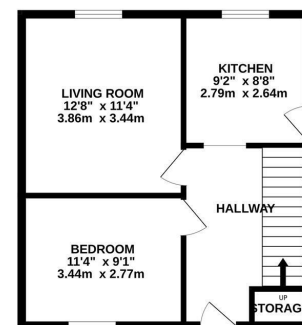
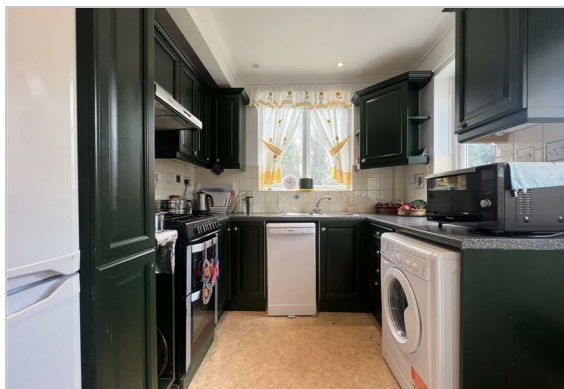
Ample Storage Space

Close to Hillingdon Hospital

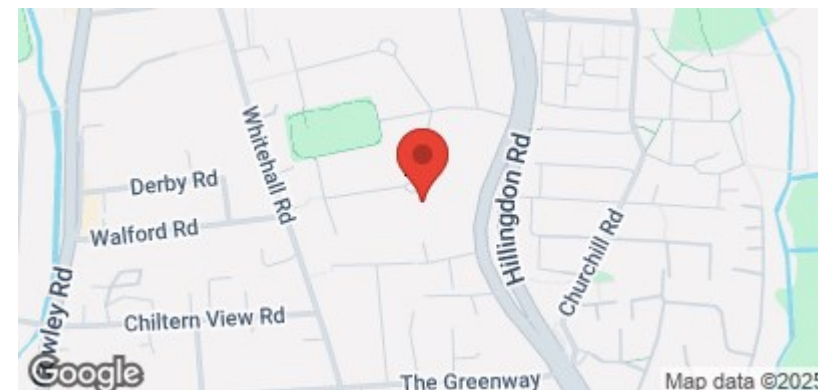
Great local transport

Available Date

5th April 2025



TOTAL FLOOR AREA: 844 sq.ft. (78.4 sq.m.) approx.
Whilst every attempt has been made to ensure the accuracy of the floorplan contained herein, measurements of doors, windows, rooms and any other items are approximate and no responsibility is taken for any error, omission or mis-statement. This plan is for illustrative purposes only and should be used as such by any prospective purchaser. The services, systems and appliances shown have not been tested and no guarantee as to their operability or efficiency can be given.
Made with Homestyler (2023)



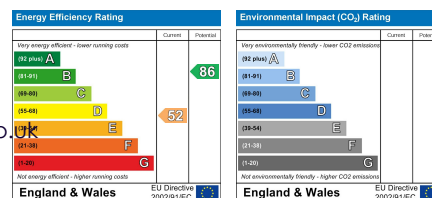
coopers
est 1986

01895 257 566

**1 Vine Street, Uxbridge,
Middlesex, UB8 1QE**

propertymanagement@coopersresidential.co.uk

CoopersResidential.co.uk



Important Notice: These particulars, whilst believed to be accurate are set out as a general outline only for guidance and do not constitute any part of an offer or contract. Intending purchasers should not rely on them as statements or representation of fact, but must satisfy themselves by inspection or otherwise has the authority to make or give any representation or warranty in respect of the property.