

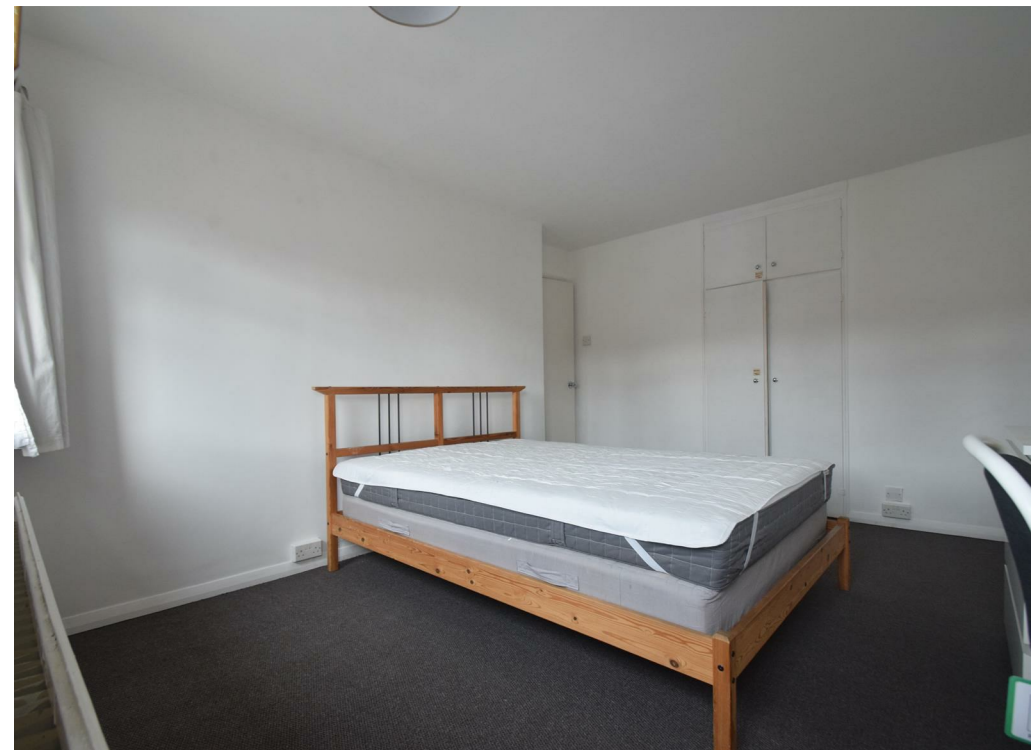


St Paul Close, Cowley, UB8 3SF
£1,950 PCM

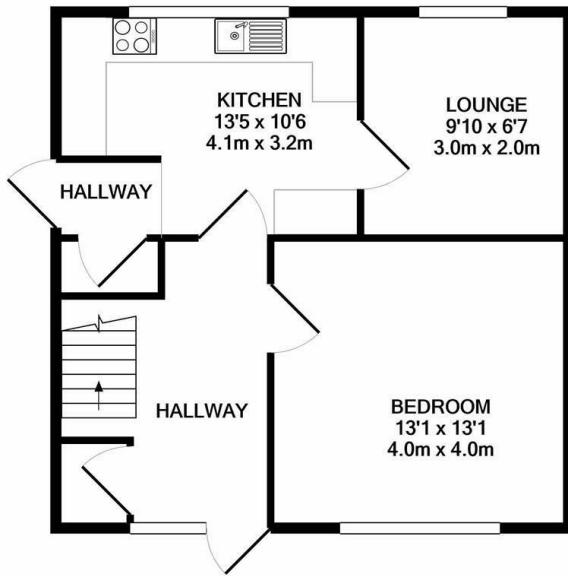
coopers
OF LONDON EST. 1986

St Paul Close, Cowley, UB8

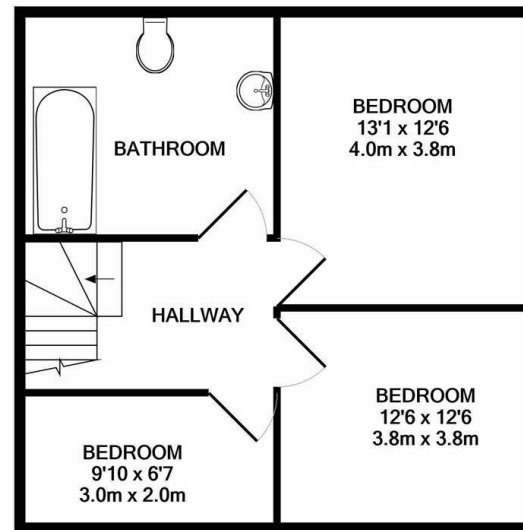
- Walking distance to Brunel University
- Ample storage space
- For students only
- Driveway
- Close to Uxbridge Town Centre
- Back garden
- Good-sized bedrooms
- Furnished
- Easy access to A40/M40
- Close to Heathrow airport





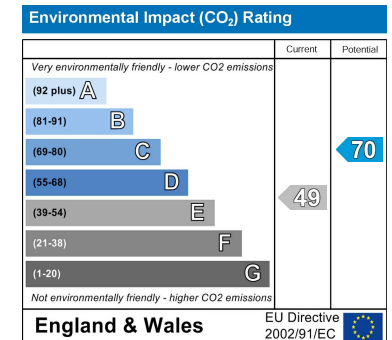
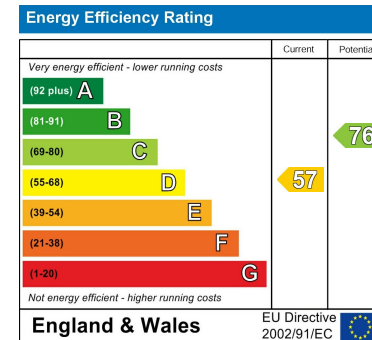


GROUND FLOOR



1ST FLOOR

Whilst every attempt has been made to ensure the accuracy of the floor plan contained here, measurements of doors, windows, rooms and any other items are approximate and no responsibility is taken for any error, omission, or mis-statement. This plan is for illustrative purposes only and should be used as such by any prospective purchaser. The services, systems and appliances shown have not been tested and no guarantee as to their operability or efficiency can be given
Made with Metropix ©2021



Viewing

Strictly by appointment with:
Coopers of London, 1 Vine Street,
Uxbridge, Middlesex UB8 1QE
propertymanagement@coopersresidential.co.uk

01895 257 566

These particulars, whilst believed to be accurate are set out as a general outline only for guidance and do not constitute any part of an offer or contract. Intending purchasers should not rely on them as statements or representation of fact, but must satisfy themselves by inspection or otherwise as to their accuracy. No person in this firm's employment has the authority to make or give any representation or warranty in respect of the property.