

# Saxon Close

Middlesex • • UB8 3RW

PCM: £2,150 PCM



coopers  
est 1986

Well presented three bedroom semi detached house located on a quiet residential road with easy access to Hillingdon Hospital, Uxbridge Town Centre and within walking distance of Bishopsholt School. Comprising: large living room leading to dining room, kitchen with appliances, three bedrooms, bathroom, garden, Garage and garden office. Benefits from gas central heating and double glazing.



Semi Detached House

Local Amenities

Private Rear Garden

16ft Garage/16ft Garden Office

Immaculately Kept

Two Reception Rooms

Quiet Cul De Sac

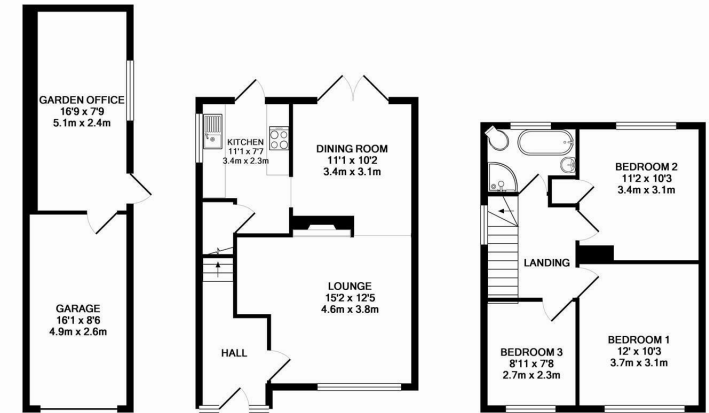
Three Bedrooms

Close to M25/M40

Near by to Hillingdon Hospital

Available Date

2nd November 2024



OUTBUILDING  
APPROX. FLOOR  
AREA 269 SQ.FT.  
(25.0 SQ.M.)

GROUND FLOOR  
APPROX. FLOOR  
AREA 427 SQ.FT.  
(39.6 SQ.M.)

1ST FLOOR  
APPROX. FLOOR  
AREA 412 SQ.FT.  
(38.3 SQ.M.)

TOTAL APPROX. FLOOR AREA 1108 SQ.FT. (103.0 SQ.M.)

Whilst every attempt has been made to ensure the accuracy of the floor plan contained here, measurements of doors, windows, rooms and any other items are approximate and no responsibility is taken for any error, omission, or mis-statement. This plan is for illustrative purposes only and should be used as such by any prospective purchaser. The services, systems and appliances shown have not been tested and no guarantee as to their operability or efficiency can be given.  
Made with Metropix ©2015



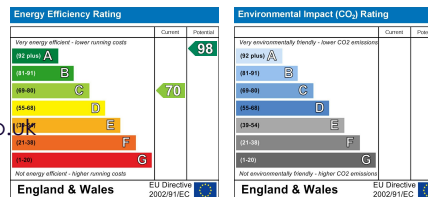
coopers  
est 1986

01895 257 566

1 Vine Street, Uxbridge,  
Middlesex, UB8 1QE

propertymanagement@coopersresidential.co.uk

CoopersResidential.co.uk



Important Notice: These particulars, whilst believed to be accurate are set out as a general outline only for guidance and do not constitute any part of an offer or contract. Intending purchasers should not rely on them as statements or representation of fact, but must satisfy themselves by inspection or otherwise has the authority to make or give any representation or warranty in respect of the property.