

Brampton Road

Middlesex • • UB10 0DR

PCM: £2,000 PCM



coopers
est 1986

This Three bedroom family home is located in the ever popular Oak Farm estate close to local schools and shops. The property offers easy access to Uxbridge town centre and the A40. Accommodation Large L-shaped lounge, Fully fitted kitchen with appliances, ground floor shower room, conservatory, Utility room, Three double bedrooms, bathroom, Benefits; Gas central heating, Double glazing, off street parking for 3-4 cars and rear garden. Unfurnished.

Double Glazing

Close to M25/A40

Ground Floor WC

White Goods

Double Bedroom

Oak Farm Estate

Driveway Parking

Amenities

Great Transport Links

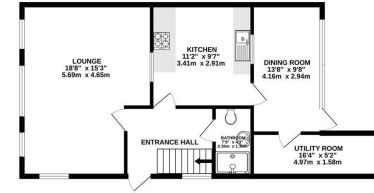
Detached

Available Date

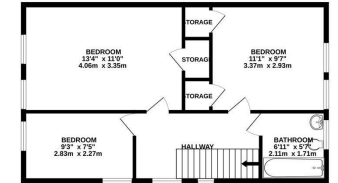
1st July 2024



GROUND FLOOR
683 sq.ft. (63.5 sq.m.) approx.



1ST FLOOR
673 sq.ft. (62.5 sq.m.) approx.



TOTAL FLOOR AREA: 1356 sq.ft. (126.0 sq.m.) approx.
While every attempt has been made to ensure the accuracy of the floorplan contained herein, measurements of rooms, windows, rooms and any other items are approximate and no responsibility is taken for any error, omission or mis-statement. This plan is for illustrative purposes only and should be used as such by any prospective purchaser. The services, systems and appliances shown have not been tested and no guarantee as to their operability or efficiency can be given.
Made with Ventago 02/24



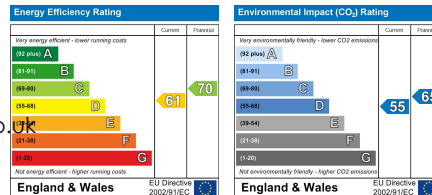
coopers
est 1986

01895 257 566

1 Vine Street, Uxbridge,
Middlesex, UB8 1QE

propertymanagement@coopersresidential.co.uk

CoopersResidential.co.uk



Important Notice: These particulars, whilst believed to be accurate are set out as a general outline only for guidance and do not constitute any part of an offer or contract. Intending purchasers should not rely on them as statements or representation of fact, but must satisfy themselves by inspection or otherwise has the authority to make or give any representation or warranty in respect of the property.