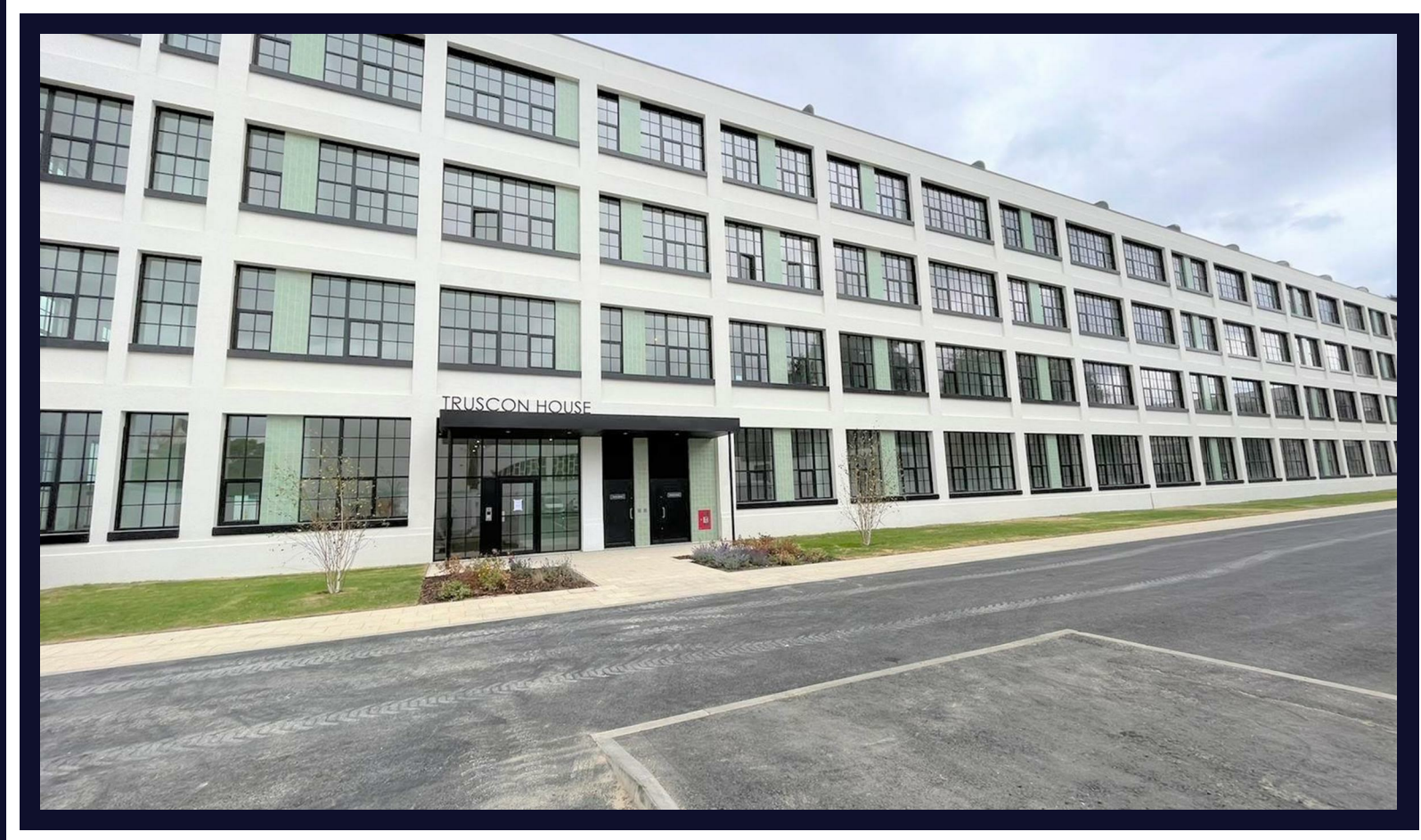


14 Carnation Gardens

Hayes • Middlesex • UB3 4FY
PCM: £1,500 PCM



coopers
est 1986

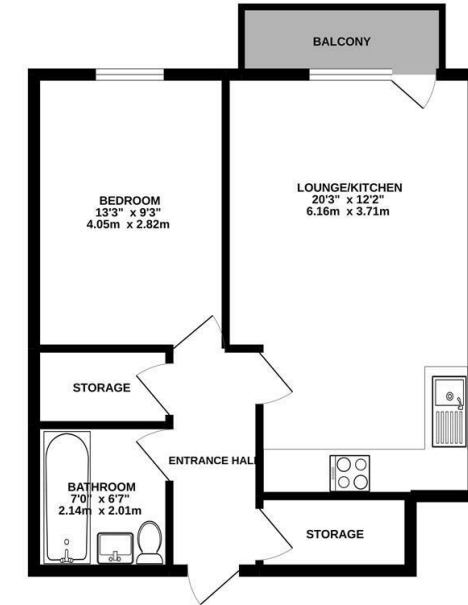
A modern and well presented apartment to rent located just moments away from Hayes and Harlington Station offering fantastic transport links to Central London via the Elizabeth Line. The property is also located nearby to Hayes High Street and provides easy access to Heathrow Airport, Stockley Business Park and Hillingdon Hospital.

Features include a large entrance hall leading to a spacious open living area and kitchen with integrated appliances, bedroom with fitted wardrobes, modern bathroom, two large storage cupboards, a private balcony and a free onsite gym.

Offered Unfurnished.



GROUND FLOOR
502 sq.ft. (46.6 sq.m.) approx.



TOTAL FLOOR AREA: 502 sq.ft. (46.6 sq.m.) approx.

Whilst every attempt has been made to ensure the accuracy of the floorplan contained here, measurements of doors, windows, rooms and any other items are approximate and no responsibility is taken for any error, omission or misstatement. This plan is for illustrative purposes only and should be used as such by any prospective purchaser. The services, fixtures and appliances shown have not been tested and no guarantee as to their operability or efficiency can be given.
Made with Metropac C3/22



Modern New Apartment
Moments from Hayes & Harlington Station

Private Balcony

Ample Storage Space

Elizabeth Line

Unfurnished

Fitted Wardrobe

Available Now

Fully Fitted Kitchen

Gym

Available Date

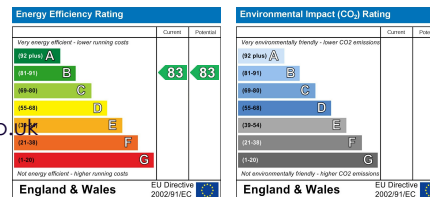
26th June 2024

01895 257 566

1 Vine Street, Uxbridge,
Middlesex, UB8 1QE

propertymanagement@coopersresidential.co.uk

CoopersResidential.co.uk



Important Notice: These particulars, whilst believed to be accurate are set out as a general outline only for guidance and do not constitute any part of an offer or contract. Intending purchasers should not rely on them as statements or representation of fact, but must satisfy themselves by inspection or otherwise has the authority to make or give any representation or warranty in respect of the property.

coopers
est 1986