

# Meadow View Road

Hayes End • Middlesex • UB4 8EZ

PCM: £2,500 PCM



coopers  
est 1986

Presented to the market, this four bedroom semi-detached house to rent in a sought after residential road in North Hayes. The property is nearby to local schools, amenities and provides great transport links.

Features include a large hallway, spacious lounge, kitchen with white goods, dining room, conservatory, W/C, four good sized bedrooms, family bathroom with shower, on Street Parking, Private Rear Garden and Gas Central Heating. Unfurnished.

### Four Bedroom Semi Detached House

Spacious Lounge

Dining Area

Kitchen with Appliances

Private Rear Garden

Family Bathroom

W/C

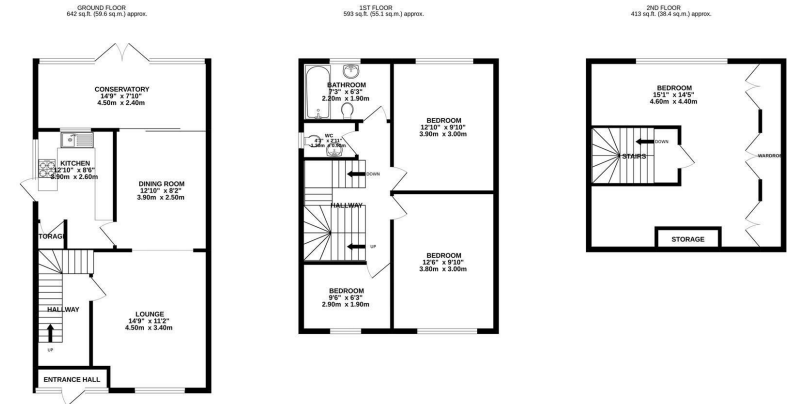
Sought After Location

Nearby to Local Schools

Close to Amenities

### Available Date

15th July 2024



TOTAL FLOOR AREA - 1648 sq.ft. (153.1 sq.m.) approx.  
 Whilst every attempt has been made to ensure the accuracy of the floorplan contained herein, measurements of areas, volumes, rooms and any other items are approximate and no responsibility is taken for any error, omission or mis-statement. This plan is for illustrative purposes only and should be used as such by any prospective purchaser. The services, systems and appliances shown have not been tested and no guarantee as to their operability or efficiency can be given.  
 Made with Mapbox ©2024

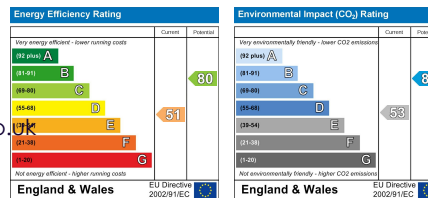


01895 257 566

1 Vine Street, Uxbridge,  
 Middlesex, UB8 1QE

propertymanagement@coopersresidential.co.uk

CoopersResidential.co.uk



Important Notice: These particulars, whilst believed to be accurate are set out as a general outline only for guidance and do not constitute any part of an offer or contract. Intending purchasers should not rely on them as statements or representation of fact, but must satisfy themselves by inspection or otherwise has the authority to make or give any representation or warranty in respect of the property.

