

Vantage Building

Station Approach • Hayes • UB3 4BQ
PCM: £1,500 PCM



coopers
est 1986

Presented to the market, this luxury one bedroom apartment located in the sought after Highpoint Village Development. The property is situated next door to Hayes and Harlington Station, provides easy access to Stockley Park, Local Amenities and provides great bus links.

Features include a double bedroom with a built in wardrobe, spacious lounge leading to a private terrace, fitted kitchen with appliances, Bathroom with shower, Great Storage Throughout, Concierge, Gymnasium, Swimming pool and allocated parking.

Available Part Furnished.

One Bedroom Apartment

Spacious Lounge

Large Bedroom with Storage

Fully Fitted Kitchen with Integrated Appliances

Terrace

Allocated Parking Space

Nearby to Local Amenities

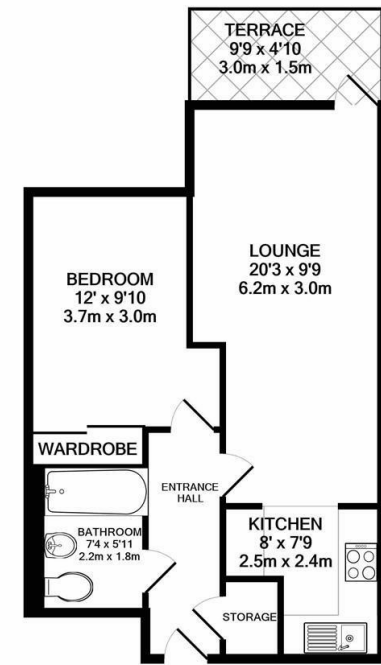
Concierge

Swimming Pool

Gym

Available Date

25th June 2024



TOTAL APPROX. FLOOR AREA 444 SQ.FT. (41.3 SQ.M.)

Whilst every attempt has been made to ensure the accuracy of the floor plan contained here, measurements of doors, windows, rooms and any other items are approximate and no responsibility is taken for any error, omission, or mis-statement. This plan is for illustrative purposes only and should be used as such by any prospective purchaser. The services, systems and appliances shown have not been tested and no guarantee as to their operability or efficiency can be given
Made with Metropix ©2021



coopers
est 1986

01895 257 566

1 Vine Street, Uxbridge,
Middlesex, UB8 1QE

propertymanagement@coopersresidential.co.uk

CoopersResidential.co.uk

Energy Efficiency Rating		Current	Present
Very energy efficient - lower running costs	A		
B			
C			
D			
E			
F			
Not energy efficient - higher running costs	G		
EU Directive 2002/91/EC		7.3	7.5

Environmental Impact (CO ₂) Rating		Current	Present
Very environmentally friendly - lower CO ₂ emissions	A		
B			
C			
D			
E			
F			
Not environmentally friendly - higher CO ₂ emissions	G		
EU Directive 2002/91/EC		89	90

Important Notice: These particulars, whilst believed to be accurate are set out as a general outline only for guidance and do not constitute any part of an offer or contract. Intending purchasers should not rely on them as statements or representation of fact, but must satisfy themselves by inspection or otherwise has the authority to make or give any representation or warranty in respect of the property.