



Connells

Butts Way
Norton Canes, Cannock



Ground Floor

Entrance Porch

Hallway

Having carpeted flooring, storage cupboards, ceiling light point, radiator and stairs to the first floor

Living Room/ Diner

11' 6" max x 23' 5" (3.51m max x 7.14m)

Having a double glazed window to the front aspect, two ceiling light points, carpeted flooring, two radiators, an electric fire and double glazed French doors to the rear aspect

Kitchen

12' x 9' 5" (3.66m x 2.87m)

Being a fitted kitchen with a range of wall, base and drawer units with laminate work surfaces over and having a sink/drain, integrated electric oven with gas hobs and extractor hood, integrated fridge/freezer and washer/dryer, ceiling spotlights, tiled flooring, tiled splashbacks, double glazed window to the rear aspect and double glazed door to the rear garden



First Floor

Landing

Having carpeted flooring, ceiling light point, hand rail up the stairs, doors to all bedrooms and family bathroom

Bedroom 1

10' 4" x 11' to wardrobe door (3.15m x 3.35m to wardrobe door)

Having a double glazed window to the rear aspect, radiator, ceiling light point, fitted wardrobes and laminate flooring

Bedroom 2

9' 8" x 10' 7" to wardrobe door (2.95m x 3.23m to wardrobe door)

Having a double glazed window to the front aspect, radiator, ceiling light point, two fitted wardrobes and carpeted flooring

Bedroom 3

7' 7" x 8' 3" (2.31m x 2.51m)

Having a double glazed window to the front aspect, laminate oak effect flooring, fitted wardrobe and ceiling light point

Bathroom

Having a double glazed window to the rear aspect, radiator, vinyl flooring, bath with shower over, wash hand basin and ceiling light point

Seperate W.C

Having a double glazed window to the rear aspect, WC and vinyl flooring

Outside

Front

Having a grassed front lawn, paved pathway leading to the front door and side access to the rear garden

Rear

Having a patio area and grassed lawn with a pathway to the brick built outbuilding

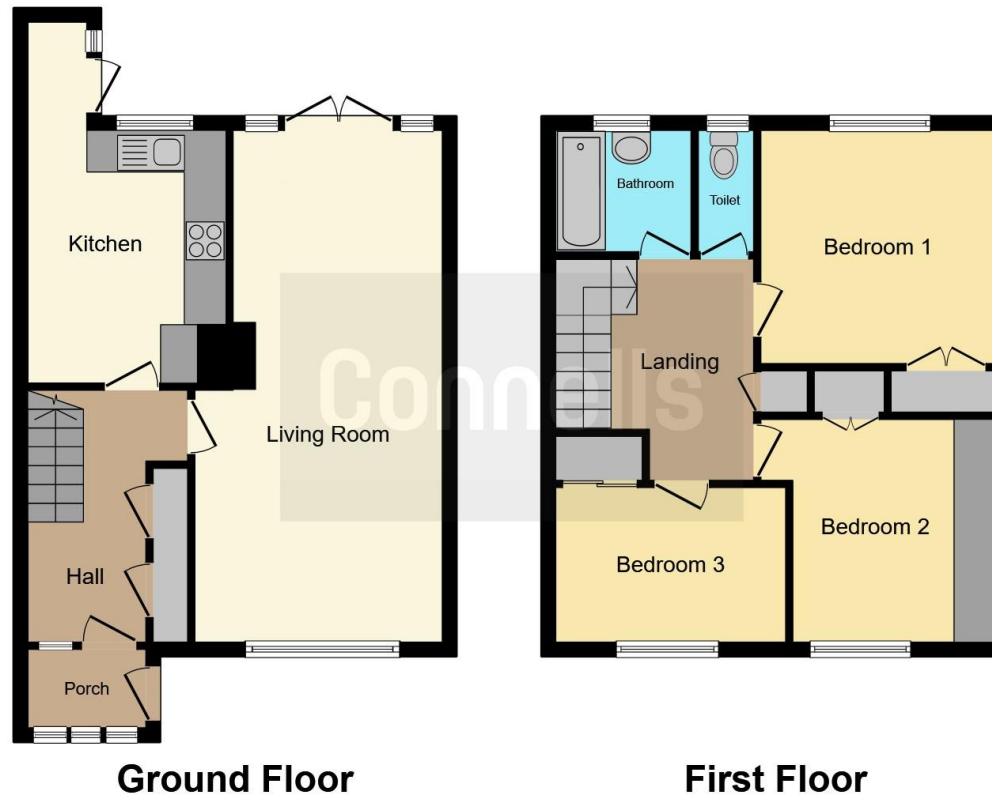
Garage

8' 3" x 16' 9" (2.51m x 5.11m)









This floor plan is for illustrative purposes only. It is not drawn to scale. Any measurements, floor areas (including any total floor area), openings and orientation are approximate. No details are guaranteed, they cannot be relied upon for any purpose and they do not form part of any agreement. No liability is taken for any error, omission or misstatement. A party must rely upon its own inspection(s). Powered by www.focalagent.com

To view this property please contact Connells on

T 01543 500923
E cannock@connells.co.uk

10-12 Wolverhampton Road
 CANNOCK WS11 1AH

EPC Rating: C

Tenure: Freehold

view this property online connells.co.uk/Property/CNK106666



1. MONEY LAUNDERING REGULATIONS Intending purchasers will be asked to produce identification documentation at a later stage and we would ask for your co-operation in order that there will be no delay in agreeing the sale. 2. These particulars do not constitute part or all of an offer or contract. 3. The measurements indicated are supplied for guidance only and as such must be considered incorrect. Potential buyers are advised to recheck measurements before committing to any expense. 4. We have not tested any apparatus, equipment, fixtures, fittings or services and it is in the buyers interest to check the working condition of any appliances.

Connells Residential is registered in England and Wales under company number 1489613, Registered Office is Cumbria House, 16-20 Hockliffe Street, Leighton Buzzard, Bedfordshire, LU7 1GN. VAT Registration Number is 500 2481 05.

See all our properties at www.connells.co.uk | www.rightmove.co.uk | www.zoopla.co.uk

Property Ref: CNK106666 - 0001