



Connells

Rowan Close
Cannock



Ground Floor

Hallway

Having a double glazed front entrance door, ceiling light point, tiled flooring, stairs to first floor and doors to WC, kitchen and lounge

W.C

Having a double glazed window to the front aspect, WC, wash hand basin, radiator, ceiling light point and tiled flooring

Lounge

14' 7" x 12' (4.45m x 3.66m)

Having double glazed French Doors to the rear garden, storage cupboard, radiator, two ceiling light points, storage cupboards, space for dining furniture and carpeted flooring

Kitchen

9' 10" x 5' 5" (3.00m x 1.65m)

Being a fitted kitchen with a range of wall, base and drawer units with laminate work surfaces over and having a sink/drain, electric oven with cooker-hood over, integral dishwasher and washing machine, ceiling light point, tiled flooring and a double glazed window to the front aspect



First Floor

Landing

Having stairs leading up from the hallway, carpeted flooring, ceiling light point, loft access and doors to bedrooms and bathroom

Bedroom 1

12' 1" x 8' 9" (3.68m x 2.67m)

Having a double glazed window to the front aspect, radiator, ceiling light point, storage cupboard and carpeted flooring

Bedroom 2

10' x 8' 3" (3.05m x 2.51m)

Having a double glazed window to the rear aspect, radiator, ceiling light point, built in wardrobes and carpeted flooring

Bathroom

Having a double glazed window to the rear aspect, WC, wash hand basin, bath with shower over, part tiled walls, extractor fan, radiator, ceiling light point and tiled flooring

Outside

Front

Having a tarmac driveway to the side, gated access to the rear, aid to lawn to the front and pathway to front entrance door

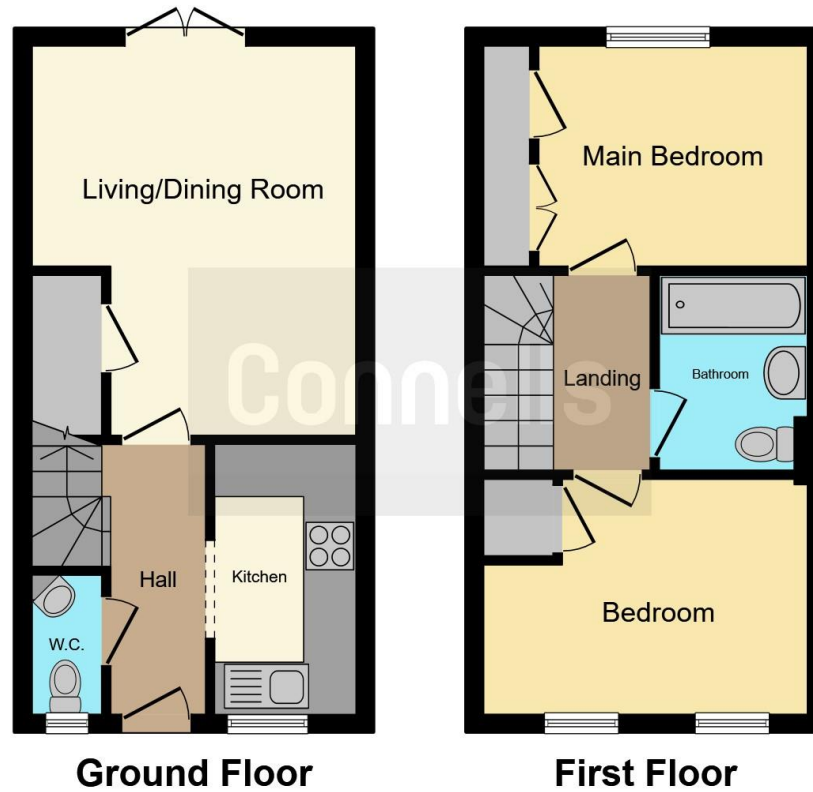
Rear

Having a paved patio area, laid to lawn, floral borders and gated access to the front









This floor plan is for illustrative purposes only. It is not drawn to scale. Any measurements, floor areas (including any total floor area), openings and orientation are approximate. No details are guaranteed, they cannot be relied upon for any purpose and they do not form part of any agreement. No liability is taken for any error, omission or misstatement. A party must rely upon its own inspection(s). Powered by www.focalagent.com

To view this property please contact Connells on

T 01543 500923
E cannock@connells.co.uk

10-12 Wolverhampton Road
 CANNOCK WS11 1AH

EPC Rating: C

Tenure: Freehold

view this property online connells.co.uk/Property/CNK107168



1. MONEY LAUNDERING REGULATIONS Intending purchasers will be asked to produce identification documentation at a later stage and we would ask for your co-operation in order that there will be no delay in agreeing the sale. 2. These particulars do not constitute part or all of an offer or contract. 3. The measurements indicated are supplied for guidance only and as such must be considered incorrect. Potential buyers are advised to recheck measurements before committing to any expense. 4. We have not tested any apparatus, equipment, fixtures, fittings or services and it is in the buyers interest to check the working condition of any appliances.

Connells Residential is registered in England and Wales under company number 1489613, Registered Office is Cumbria House, 16-20 Hockliffe Street, Leighton Buzzard, Bedfordshire, LU7 1GN. VAT Registration Number is 500 2481 05.

See all our properties at www.connells.co.uk | www.rightmove.co.uk | www.zoopla.co.uk

Property Ref: CNK107168 - 0001