



Connells

Trent Road
Cannock



Ground Floor

Porch

Having a double glazed front entrance door, storage cupboard, ceiling light point, laminate flooring and door to kitchen

Kitchen

20' x 7' 11" (6.10m x 2.41m)

Being a fitted kitchen with a range of wall, base and drawer units with laminate work surfaces over and having a sink/drain, integrated electric oven with gas hobs and extractor over, plumbing for the washing machine and dishwasher, space for appliances, ceiling light point, ceiling spotlights, vinyl flooring, double glazed window to the rear aspect, stairs to first floor and door to hallway and lounge

Side Hallway

Having double glazed doors to the front and rear, ceiling light point, vinyl flooring and doors to shower room and sitting room

Sitting Room

Having a double glazed window to the front aspect, radiator, ceiling light point and vinyl flooring

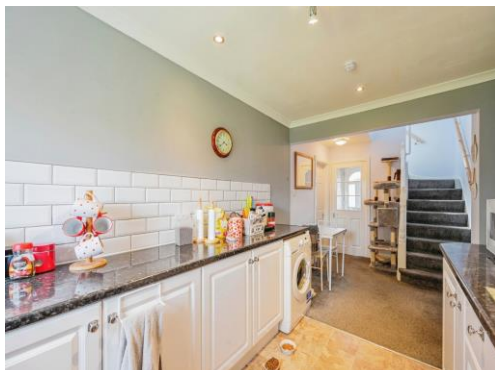
Shower Room

Having a WC, wash hand basin, walk in shower, ceiling light point, tiled walls and vinyl flooring

Lounge / Diner

23' 4" x 10' 11" (7.11m x 3.33m)

Being a "through" lounge and having a double glazed window to the front aspect, double glazed French doors to the rear aspect, two radiators, two ceiling light points, electric fireplace, carpeted flooring, space for dining furniture and door to kitchen



First Floor

Bedroom 1

12' 11" x 10' 11" (3.94m x 3.33m)

Having a double glazed window to the rear aspect, radiator, ceiling light point, loft access and carpeted flooring

Bedroom 2

10' 1" x 10' 10" (3.07m x 3.30m)

Having a double glazed window to the front aspect, radiator, ceiling light point and carpeted flooring

Bedroom 3

9' 10" x 7' 11" (3.00m x 2.41m)

Having a double glazed window to the rear aspect, radiator, ceiling light point and carpeted flooring

Shower Room

Having a double glazed window to the side aspect, vanity WC and wash hand basin, shower cubicle, towel radiator, ceiling spotlights and vinyl flooring

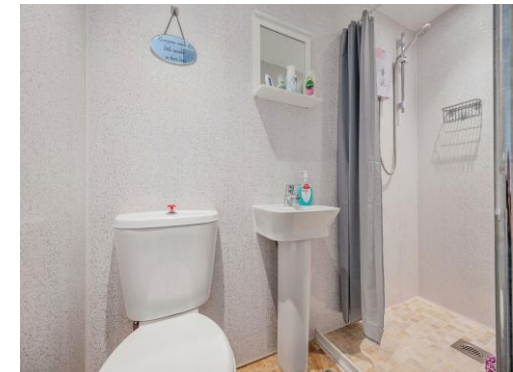
Outside

Front

Having a brick paved driveway suitable for multiple vehicles

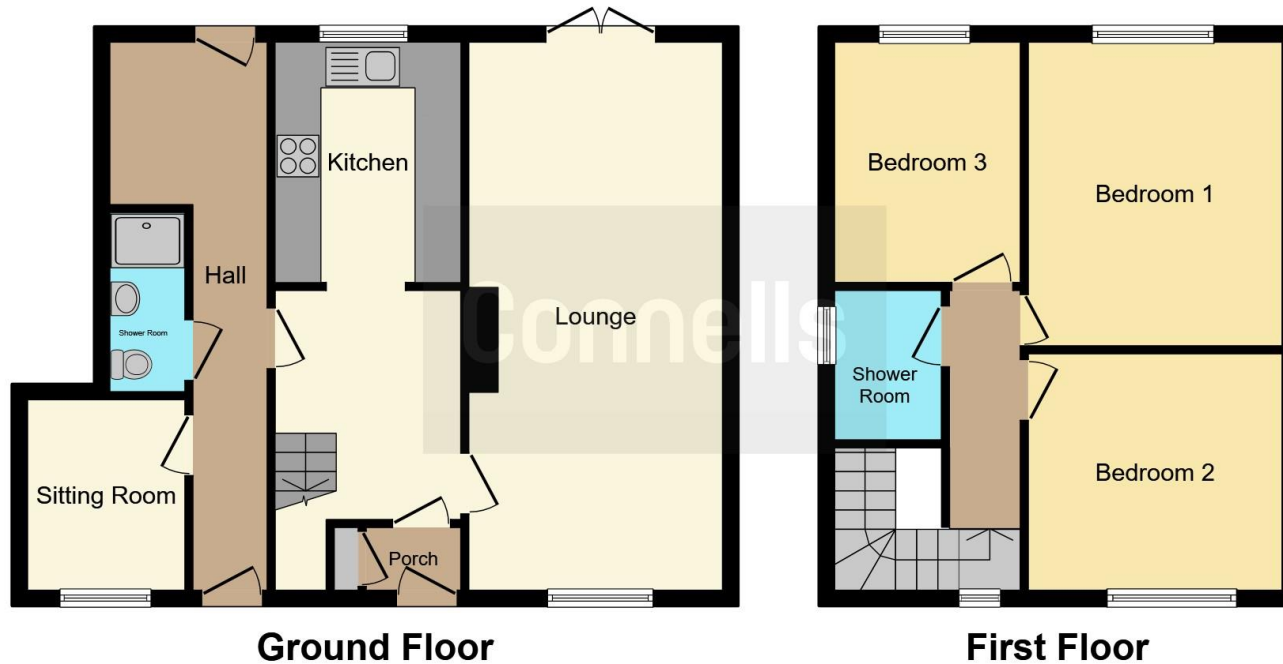
Rear

Having a brick paved patio area, laid to lawn, a variety of plants and shrubs and door to side hallway









This floor plan is for illustrative purposes only. It is not drawn to scale. Any measurements, floor areas (including any total floor area), openings and orientation are approximate. No details are guaranteed, they cannot be relied upon for any purpose and they do not form part of any agreement. No liability is taken for any error, omission or misstatement. A party must rely upon its own inspection(s). Powered by www.focalagent.com

To view this property please contact Connells on

T 01543 500923
E cannock@connells.co.uk

10-12 Wolverhampton Road
 CANNOCK WS11 1AH

EPC Rating: B

view this property online connells.co.uk/Property/CNK107124

Tenure: Freehold



1. MONEY LAUNDERING REGULATIONS Intending purchasers will be asked to produce identification documentation at a later stage and we would ask for your co-operation in order that there will be no delay in agreeing the sale. 2. These particulars do not constitute part or all of an offer or contract. 3. The measurements indicated are supplied for guidance only and as such must be considered incorrect. Potential buyers are advised to recheck measurements before committing to any expense. 4. We have not tested any apparatus, equipment, fixtures, fittings or services and it is in the buyers interest to check the working condition of any appliances.

Connells Residential is registered in England and Wales under company number 1489613, Registered Office is Cumbria House, 16-20 Hockliffe Street, Leighton Buzzard, Bedfordshire, LU7 1GN. VAT Registration Number is 500 2481 05.

See all our properties at www.connells.co.uk | www.rightmove.co.uk | www.zoopla.co.uk

Property Ref: CNK107124 - 0002