



Connells

James Street
Cannock



Ground Floor

Hallway

Having a double glazed front entrance door, radiator, ceiling light point, laminate flooring and stairs to First Floor

Lounge / Diner

22' 3" x 10' 4" (6.78m x 3.15m)

Being a "through" lounge and having a double glazed bay window to the front aspect, double glazed French doors to the rear aspect, media wall, space for dining, two radiators, two ceiling light points, carpeted flooring and doors to kitchen and hallway

Kitchen

17' 5" x 4' 8" (5.31m x 1.42m)

Being a fitted kitchen with a range of wall, base and drawer units with laminate work surfaces over and having a one and a half bowl sink/drainer, plumbing for utility purposes, cooker-hood, space for appliances, tiled splash-backs, two ceiling light point, tiled flooring, storage cupboard, double glazed window to the rear aspect and double glazed sliding doors to the lean to for side access to the front and rear



First Floor

Landing

Access to the fully boarded loft

Bedroom 1

10' 9" x 13' 7" (3.28m x 4.14m)

Having a double glazed window to the front aspect, built in wardrobes, fitted over bed storage, radiator, ceiling light point and carpeted flooring

Bedroom 2

10' 9" x 10' (3.28m x 3.05m)

Having a double glazed window to the rear aspect, ceiling light point and plumbing for radiator

Shower Room

Having a double glazed window to the rear aspect, WC, vanity wash hand basin, shower cubicle, radiator, ceiling light point and laminate flooring

Outside

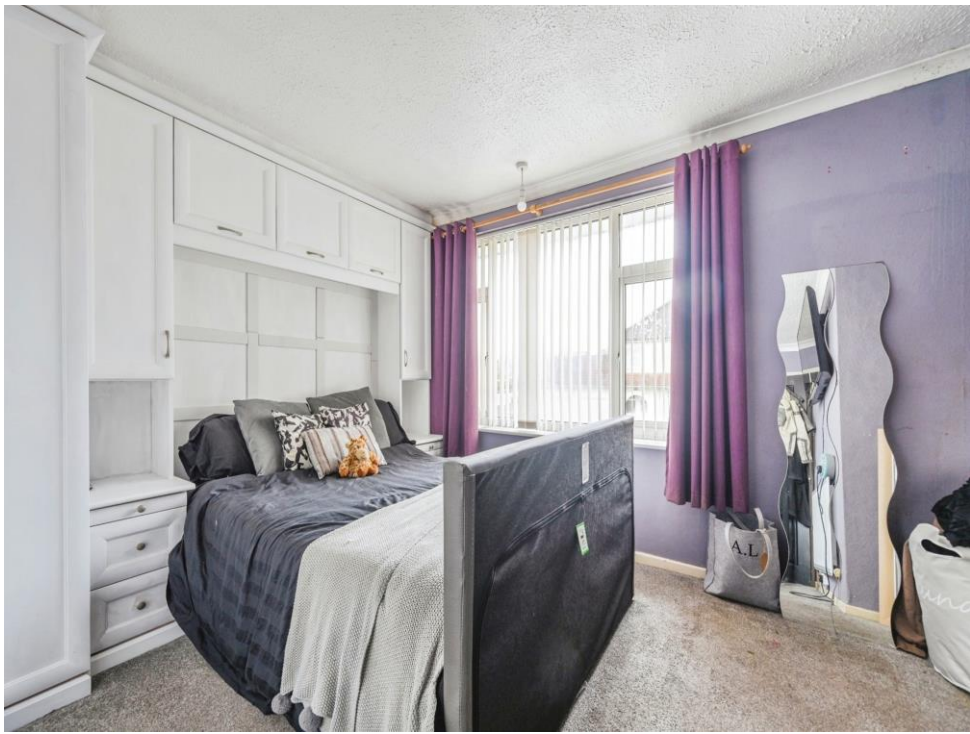
Front

Having a paved driveway suitable for multiple vehicles

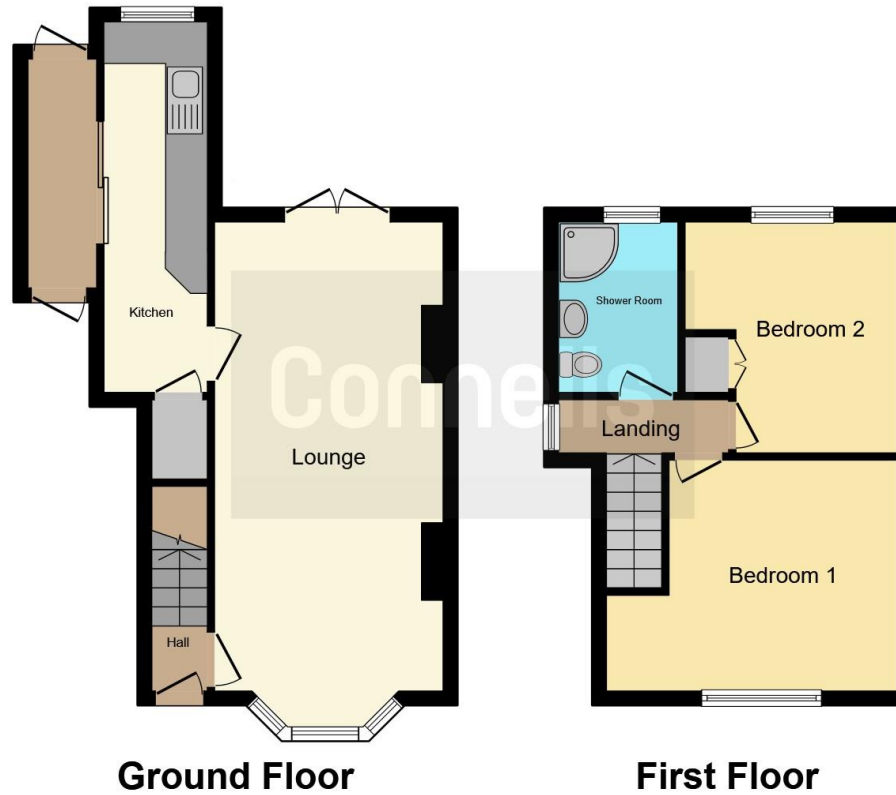
Rear

Having a paved patio area and laid to lawn backing onto the rear fields









This floor plan is for illustrative purposes only. It is not drawn to scale. Any measurements, floor areas (including any total floor area), openings and orientation are approximate. No details are guaranteed, they cannot be relied upon for any purpose and they do not form part of any agreement. No liability is taken for any error, omission or misstatement. A party must rely upon its own inspection(s). Powered by www.focalagent.com

To view this property please contact Connells on

T 01543 500923
E cannock@connells.co.uk

10-12 Wolverhampton Road
 CANNOCK WS11 1AH

EPC Rating: C

view this property online connells.co.uk/Property/CNK106495

Tenure: Freehold



1. MONEY LAUNDERING REGULATIONS Intending purchasers will be asked to produce identification documentation at a later stage and we would ask for your co-operation in order that there will be no delay in agreeing the sale. 2. These particulars do not constitute part or all of an offer or contract. 3. The measurements indicated are supplied for guidance only and as such must be considered incorrect. Potential buyers are advised to recheck measurements before committing to any expense. 4. We have not tested any apparatus, equipment, fixtures, fittings or services and it is in the buyers interest to check the working condition of any appliances.

Connells Residential is registered in England and Wales under company number 1489613, Registered Office is Cumbria House, 16-20 Hockliffe Street, Leighton Buzzard, Bedfordshire, LU7 1GN. VAT Registration Number is 500 2481 05.

See all our properties at www.connells.co.uk | www.rightmove.co.uk | www.zoopla.co.uk

Property Ref: CNK106495 - 0002