



Connells

Bellbrook
Penkridge Stafford



Ground Floor

Entrance Hallway

Having stairs leading to the first floor and door leading to the lounge

Lounge

13' 7" x 15' 9" (4.14m x 4.80m)

Having a feature fireplace, double glazed window to the front aspect, wooden flooring, radiator, storage cupboard and two ceiling light points

Kitchen

13' 7" x 13' 4" (4.14m x 4.06m)

Being a fitted kitchen with a range of wall, base and drawer units with laminate work surfaces over and having a one and half bowl sink/drainer, electric hob, electric oven, plumbing for washing machine and dishwasher, space for appliances, ceiling spotlights, double glazed window to the rear aspect and patio doors to the rear aspect leading to the rear garden



First Floor

Landing

Having access to bedroom 2, bedroom 3 and the family bathroom

Bedroom 2

13' 7" x 10' 8" (4.14m x 3.25m)

Having two velux windows, a double glazed window, carpeted flooring and ceiling light point

Bedroom 3

8' 8" x 13' 1" (2.64m x 3.99m)

Having a double glazed window to the side aspect, radiator, carpeted flooring and a ceiling light point

Bathroom

Having a separate double shower with glassed screen, a separate bath with shower attachment, ceiling spotlights, WC, wash hand basin, part tiled walls and tiled flooring

Second Floor

Bedroom 1

13' 1" x 13' 1" (3.99m x 3.99m)

Having a double glazed window, ceiling light point, carpeted flooring, and an exposed brick feature wall

Outside

Front

Having a block paved driveway providing off road parking and a gate for side access to the rear

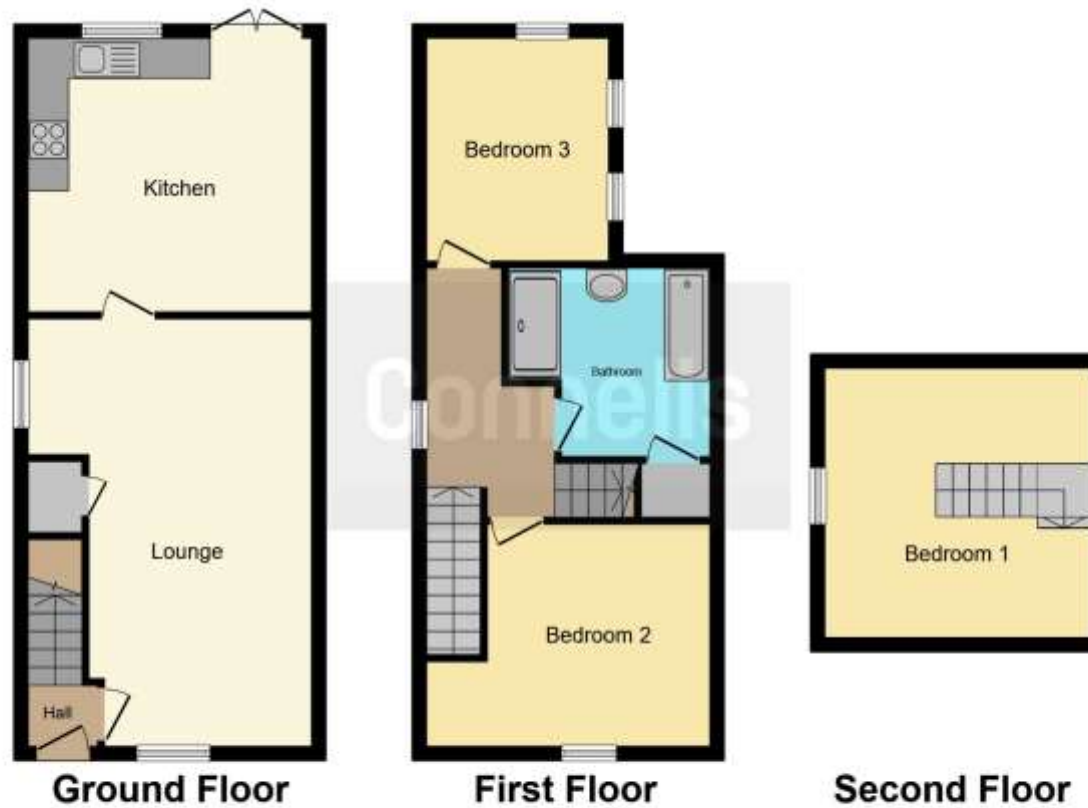
Rear

Being a large rear garden with grassed lawn and a paved patio









This floorplan is for illustrative purposes only and is not drawn to scale. Measurements, floor-areas, openings and orientations are approximate. They should not be relied upon for any purpose and do not form any part of an agreement. No liability is taken for any error or mis-statement. All parties must rely on their own inspections.

To view this property please contact Connells on

T 01543 500923
E cannock@connells.co.uk

10-12 Wolverhampton Road
 CANNOCK WS11 1AH

EPC Rating: D

Tenure: Freehold

view this property online connells.co.uk/Property/CNK106745



1. MONEY LAUNDERING REGULATIONS Intending purchasers will be asked to produce identification documentation at a later stage and we would ask for your co-operation in order that there will be no delay in agreeing the sale. 2. These particulars do not constitute part or all of an offer or contract. 3. The measurements indicated are supplied for guidance only and as such must be considered incorrect. Potential buyers are advised to recheck measurements before committing to any expense. 4. We have not tested any apparatus, equipment, fixtures, fittings or services and it is in the buyers interest to check the working condition of any appliances.

Connells Residential is registered in England and Wales under company number 1489613, Registered Office is Cumbria House, 16-20 Hockliffe Street, Leighton Buzzard, Bedfordshire, LU7 1GN. VAT Registration Number is 500 2481 05.

See all our properties at www.connells.co.uk | www.rightmove.co.uk | www.zoopla.co.uk

Property Ref: CNK106745 - 0002