



Connells

The Fallows, Pye Green Road
Hednesford, Cannock



Property Description

READY TO MOVE INTO

Part Exchange available for homes worth up to £372,000 OR have £10,750 stamp duty paid! Plot 118

Our Exeter is a lovely 4-bed home. On the ground floor, your upgraded kitchen-diner has integrated appliances and a glazed bay to your spacious garden. There's also a separate utility and a cloakroom. At the front of the home, your dual-aspect lounge has a bay window, filling the room with natural light.

Upstairs, your luxurious main bedroom has a private en suite shower. There are three more double bedrooms which share the family bathroom. This home features an integral garage and driveway parking for 2 cars.

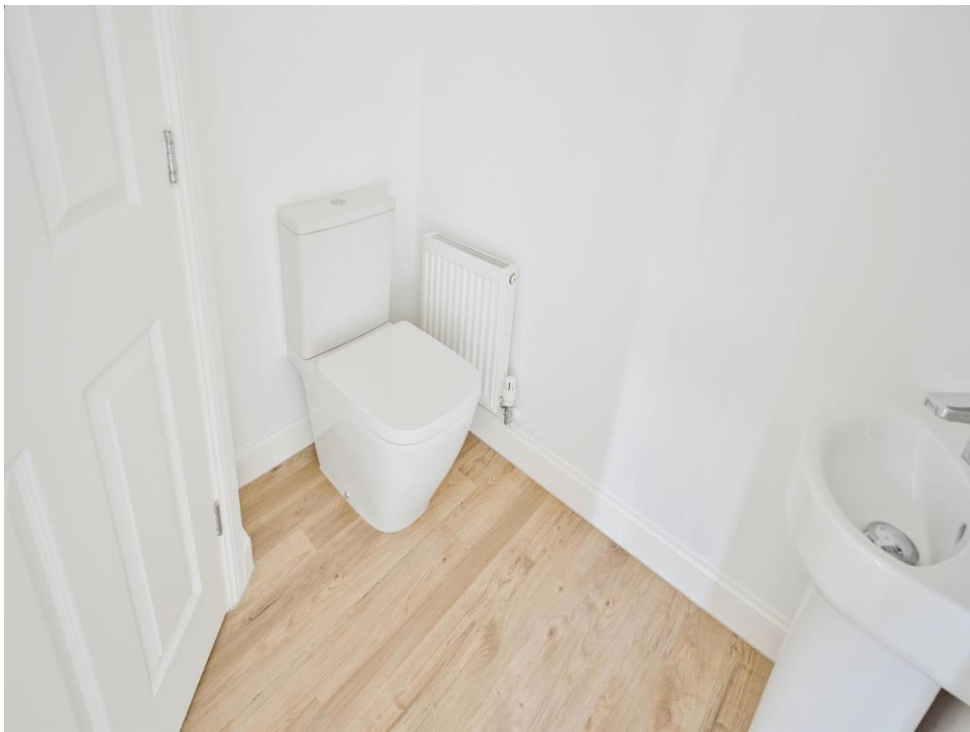


Agents Note:

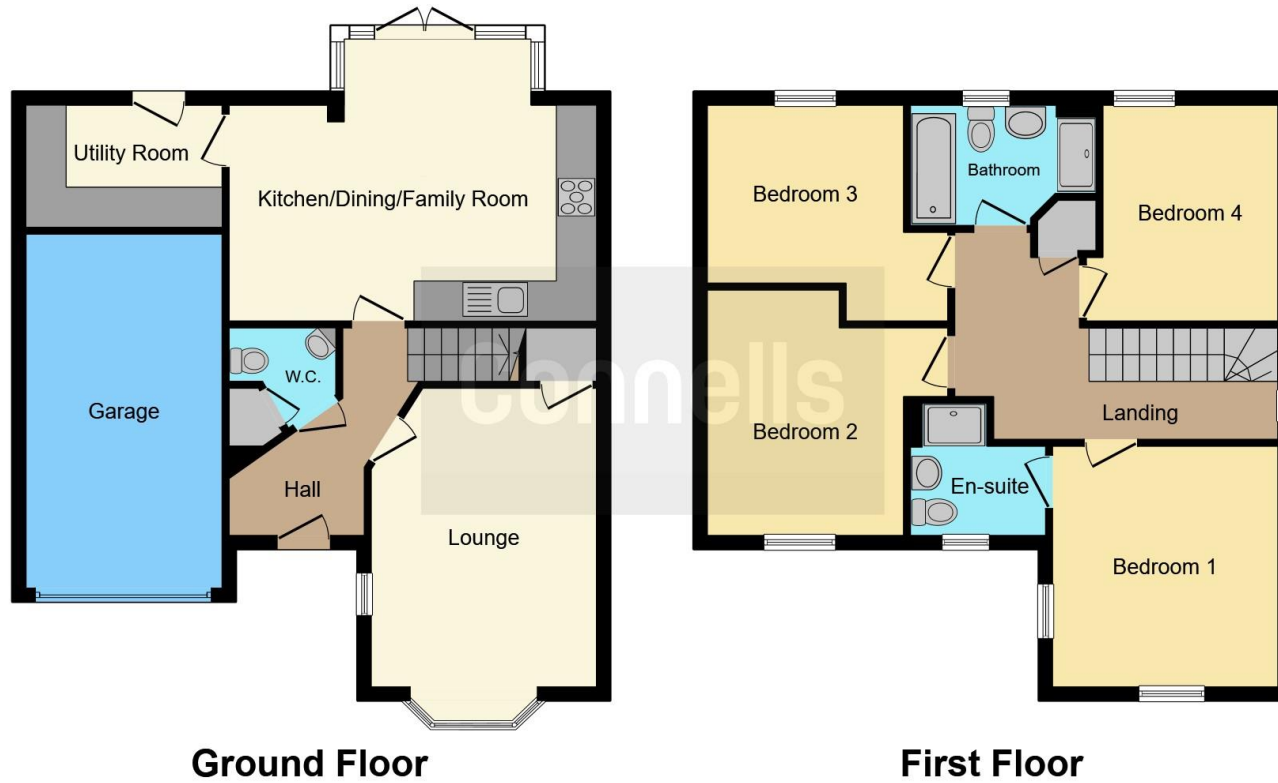
All images used are for illustrative purposes only. These and the dimensions given are illustrative for this house type and individual properties may differ, in particular, final elevations of the property purchased may differ from those shown. Please check with your Sales Adviser in respect of individual properties. We give maximum dimensions within each room which includes areas of fixtures and fittings including fitted furniture. These dimensions should not be used for carpet or flooring sizes, appliance spaces or items of furniture. All images, photographs and dimensions are not intended to be relied upon for, nor to form part of, any contract unless specifically incorporated in writing into the contract.

Images are an artists impression and for illustration purposes only. They should not be seen as a like for like representation of the final development. The finish of individual homes may vary slightly from the brochure and any imagery contained within.









This floor plan is for illustrative purposes only. It is not drawn to scale. Any measurements, floor areas (including any total floor area), openings and orientation are approximate. No details are guaranteed, they cannot be relied upon for any purpose and they do not form part of any agreement. No liability is taken for any error, omission or misstatement. A party must rely upon its own inspection(s). Powered by www.focalagent.com

To view this property please contact Connells on

T 01543 500923
E cannock@connells.co.uk

10-12 Wolverhampton Road
 CANNOCK WS11 1AH

EPC Rating: Exempt

Tenure: Freehold

view this property online connells.co.uk/Property/CNK106383



1. MONEY LAUNDERING REGULATIONS Intending purchasers will be asked to produce identification documentation at a later stage and we would ask for your co-operation in order that there will be no delay in agreeing the sale. 2. These particulars do not constitute part or all of an offer or contract. 3. The measurements indicated are supplied for guidance only and as such must be considered incorrect. Potential buyers are advised to recheck measurements before committing to any expense. 4. We have not tested any apparatus, equipment, fixtures, fittings or services and it is in the buyers interest to check the working condition of any appliances.

Connells Residential is registered in England and Wales under company number 1489613, Registered Office is Cumbria House, 16-20 Hockliffe Street, Leighton Buzzard, Bedfordshire, LU7 1GN. VAT Registration Number is 500 2481 05.

See all our properties at www.connells.co.uk | www.rightmove.co.uk | www.zoopla.co.uk

Property Ref: CNK106383 - 0001