

Paul Bott & Co



- Outstanding One Bedroom Apartment
- Beautifully Restored And Updated Throughout

10a Chesham Place, Brighton, BN2 1FB

Offers In Excess Of £375,000

A stunning one-bedroom apartment located on the incredibly popular Chesham Place. Within seconds of the famous Brighton Beach, this property has been completely re-renovated throughout, offering a tranquil, luxurious home.



Property Description

The property is located down a set of steps from street level, offering private entry. A short entrance hall leads into a long, bright hallway that runs the length of the property. The door immediately to your left upon entering the property leads into the lounge. Positioned to the front of the apartment, a half bay space offers natural light via the two full size sash windows. Decorated in a warming, neutral colour, dark wooden flooring, runs underfoot throughout the property, complimenting each room perfectly.

The bedroom is exquisite, decorated with a light olive throughout, complimented by a soft yellow to the cabinet doors, which are built in to either side of the chimney stack. A large window overlooks the rear courtyard, which allows for beautiful natural light to flood the space.

The kitchen of any property is the hub of the home, but the kitchen that has been designed and installed in this property is an absolute knockout. Combining modern tiling with open brick, a quartz counter runs the entire length, and storage has been included everywhere possible, with high level cabinets and brass furniture. The old chimney offers space for a range cooker and high-end extractor, and the kitchen benefits from a dishwasher and space for a fridge freezer. A stable door leads out to a private, west facing patio, perfect for summer evenings.

The bathroom is yet another showstopper, finished to an incredible level. Bespoke tiling has been laid to the floor coupled with beautiful modern wall tiles throughout, which gives a spa-like feel, exemplified by the waterfall shower and glass surround which occupies the far end, as well as a beautiful free-standing bathtub also installed.

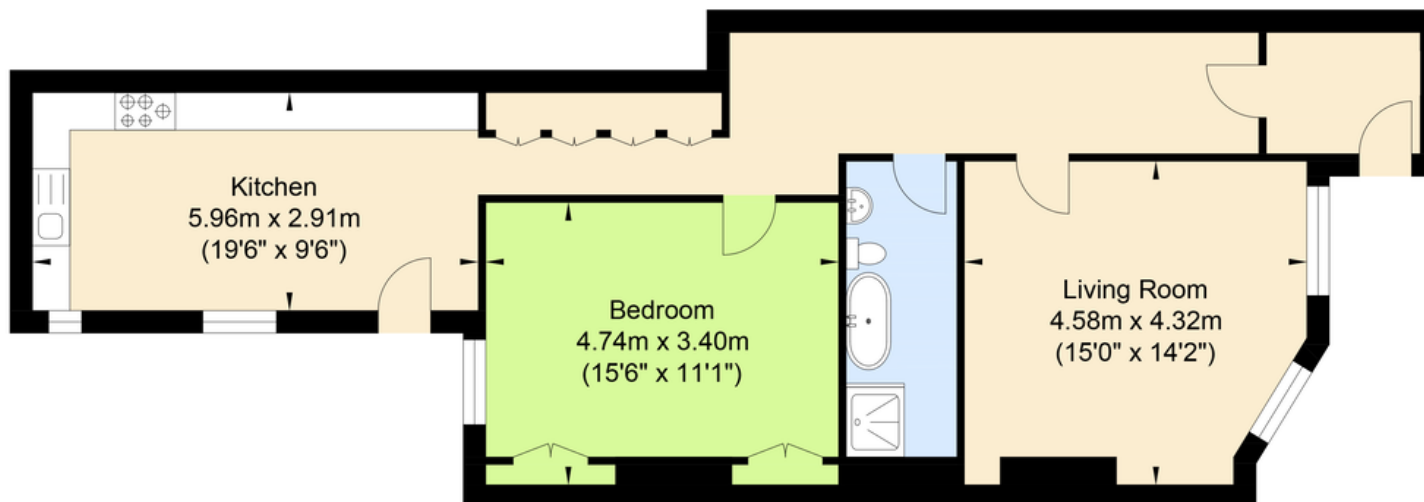




The property has been remodelled thoughtfully throughout and extremely well thought through. Bespoke storage has been installed in the hallway which allows for a lot of space and there is a real hint of luxury throughout the whole home. It is excellently well located, towards the top of Chesham Place, with the sea moments away and Kemp Town village on your doorstep with its various shops, bakeries and pubs.



Chesham Place



Approximate Floor Area
889.63 sq ft
(82.65 sq m)

Approximate Gross Internal Area = 82.65 sq m / 889.63 sq ft

Illustration for identification purposes only, measurements are approximate, not to scale.

29 Upper St James Street,
Brighton, East Sussex, BN2 1JN

www.paulbottandcompany.co.uk
01273 605530
info@paulbottandcompany.co.uk

Agents Note: Whilst every care has been taken to prepare these sales particulars, they are for guidance purposes only. All measurements are approximate are for general guidance purposes only and whilst every care has been taken to ensure their accuracy, they should not be relied upon and potential buyers are advised to recheck the measurements