

Paul Bott & Co



- Large Two Bedroom Apartment
- Private Entrance
- Beautiful East Facing Patio
- Sold With New Lease

21a Chesham Place, Brighton, BN2 1FB

Asking Price Of £350,000

Asking Price Of £350,000 Located on the highly sought after Chesham Place, this two bedroom, lower ground floor apartment is perfect for those looking for an excellent home, seconds from the sea. With a private entrance, private patio space, two well proportioned bedrooms, large kitchen space and a wonderful lounge.

Property Description

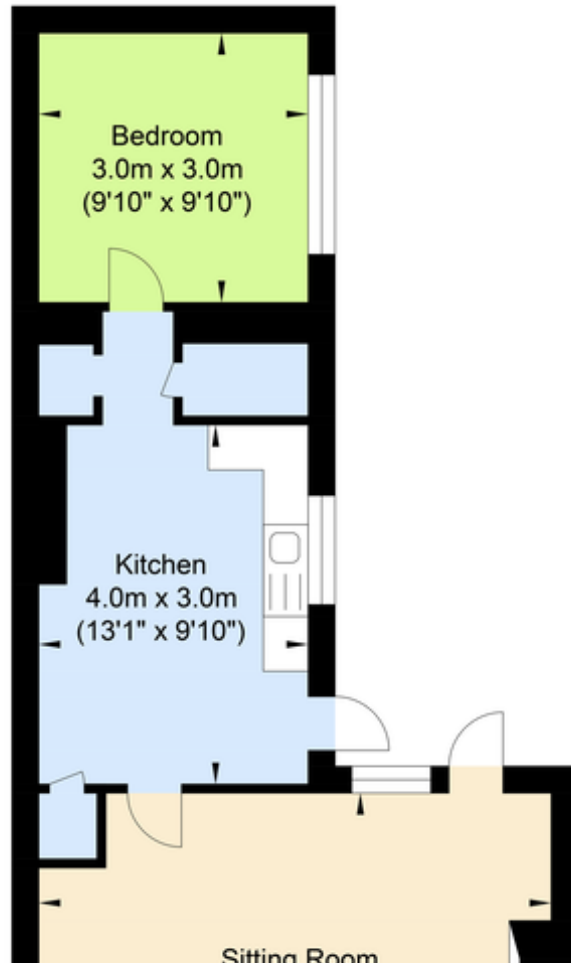
Stepping through your private entrance, you come into a long hall space leading the length of the apartment. To your right, a large master bedroom, with a beautiful, west facing bay window and natural light flooding in. To the end of the hall, a large bright lounge space complete with a beautiful outlook, a fireplace to the far wall and a door leading out to a private courtyard. The courtyard is a large patio space, with beautiful flowers surrounding it and east facing, perfect for your morning coffee. The kitchen leads off the lounge space and is of a large size, with a south facing aspect, views across the courtyard and leads out to the private courtyard. The kitchen has more than enough space for large quantities of storage, not to mention space for a fridge freezer, washing machine and further appliances. The second bedroom is a large single, again with a south facing window allowing for beautiful light all day, with more than enough space for a bed and various storage options. The property also features a large bathroom, with a modern walk in shower, W/C and wash basin.

Although requiring modernisation, this property is in a prime location on a sought after part of Kempton. With easy access to the beach and a short walk from the village, boasting scores of shops, bakeries and bars, this property is an absolute must see.





Chesham Place



%epcGraph_c_1_334%

29 Upper St James Street,
Brighton, East Sussex, BN2 1JN

www.paulbottandcompany.co.uk
01273 605530
info@paulbottandcompany.co.uk

Agents Note: Whilst every care has been taken to prepare these sales particulars, they are for guidance purposes only. All measurements are approximate and for general guidance purposes only and whilst every care has been taken to ensure their accuracy, they should not be relied upon and potential buyers are advised to recheck the measurements