

# Paul Bott & Co



- Regency Historic Building
- Two Double Bedrooms
- Located On Brighton City Seafront
- Presented In Good Decorative Order

19, Chain Pier House, 46-48 Marine Parade, Brighton, East Sussex BN1 2JF In Excess Of £350,000

Regency Period Property. Located on Kemp Town Seafront with sea views in Kemp Town Village and easy access to Brighton City Centre. Excellent communal areas with a lift. Two double bedrooms, good size lounge, separate kitchen, and a modern fitted bathroom. NO ONWARD CHAIN.



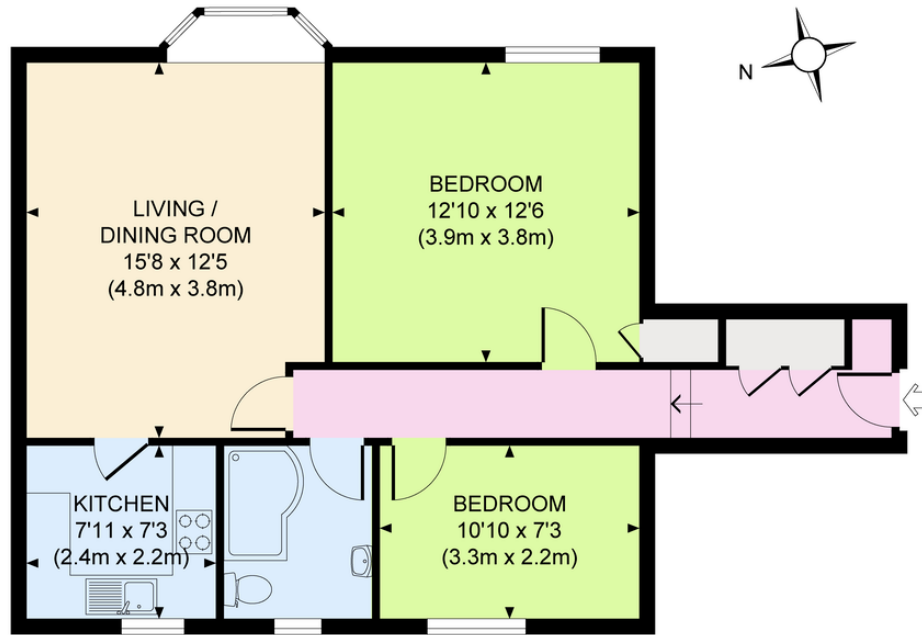
## Property Description

Regency Period Property. Ideally placed on Kemp Town Seafront with stunning sea views within easy reach of Kemp Town Village and Brighton City Centre. Smart communal areas with a lift. Two double bedrooms, front facing living room with sea views, separate kitchen, and a modern fitted bathroom.





Approximate Gross Internal Area  
651 sq ft / 60.5 sq m



%epcGraph\_c\_1\_334%

This plan is for layout guidance only. Not drawn to scale unless stated. Whilst every care is taken in the preparation of this plan, please check all dimensions, shapes and compass bearings before making any decisions reliant upon them.

29 Upper St James Street,  
Brighton, East Sussex, BN2 1JN

[www.paulbottandcompany.co.uk](http://www.paulbottandcompany.co.uk)  
01273 605530  
[info@paulbottandcompany.co.uk](mailto:info@paulbottandcompany.co.uk)

Agents Note: Whilst every care has been taken to prepare these sales particulars, they are for guidance purposes only. All measurements are approximate and for general guidance purposes only and whilst every care has been taken to ensure their accuracy, they should not be relied upon and potential buyers are advised to recheck the measurements