

pomp

properties



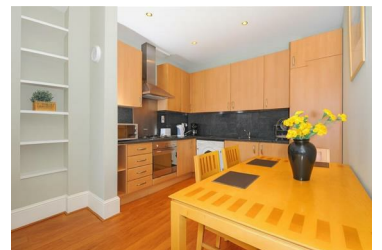
Elsham Road, Holland Park

£2,500



A bright and stylish two double-bedroom apartment set on the first floor of a highly sought-after period conversion in prime Kensington. Offered fully furnished, the property features a generous and well-proportioned reception room with a dedicated dining area, a modern fully fitted kitchen, two spacious double bedrooms, and a contemporary family bathroom. Excellent built-in storage and an abundance of natural light throughout create a warm, comfortable living environment.

Ideally located on a quiet residential street, the apartment is moments from the open green spaces of Holland Park and within easy reach of the boutiques, cafés, and restaurants of Holland Park Avenue and Kensington High Street. Transport links are superb, with Kensington Olympia, Shepherd's Bush, and Holland Park stations all nearby, providing swift access across London. A charming home that perfectly combines period character, space, and an exceptional location in one of the capital's most desirable neighbourhoods.



6 Hogarth Road, London, SW5 0PT

Tel: 020 7373 4000 Email: enquiries@pompproperties.com