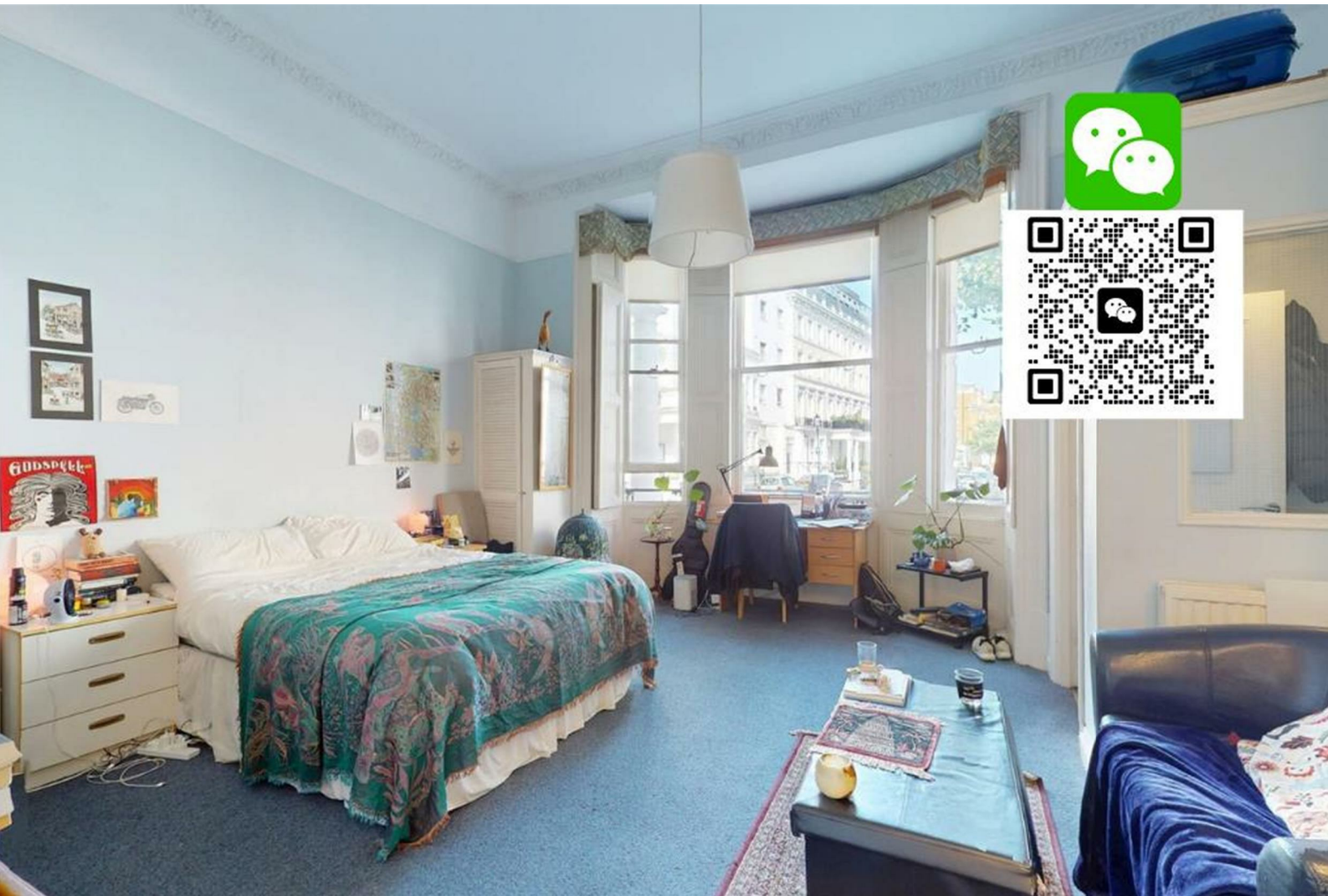


pomp

properties



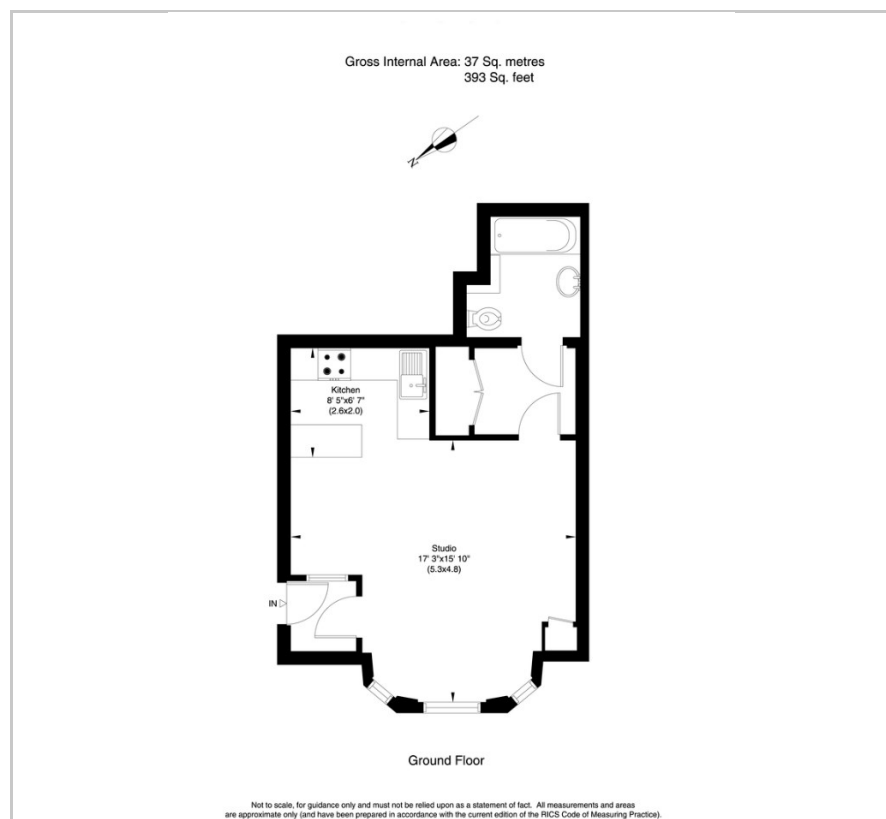
A1, 16 Trebovir Road

, Earls Court, SW5 9NH

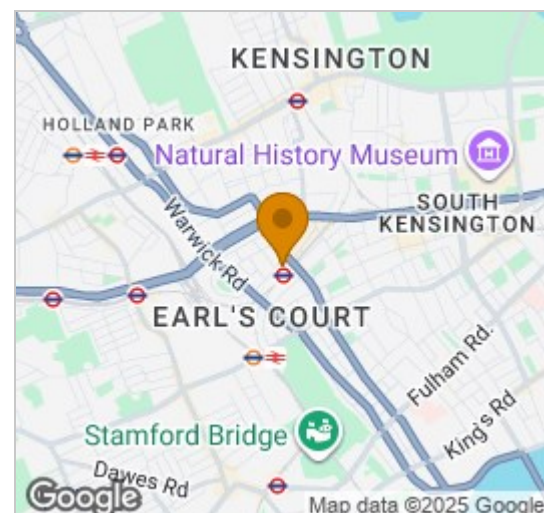
£1,900 Per Month



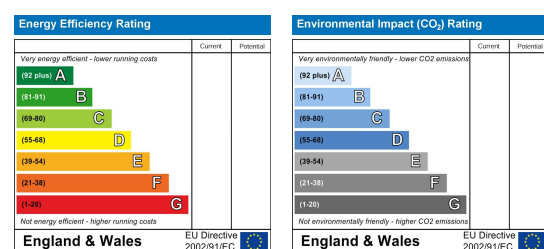
Floor Plan



Area Map



Energy Efficiency Graph



Viewing

Please contact our Pomp Properties Office on 020 7373 4000 if you wish to arrange a viewing appointment for this property or require further information.

- Large Studio
- Large Bathroom
- High Ceilings
- Ground Floor Flat
- Energy Rating : C
- Washing Machine

VIDEO TOUR AVAILABLE A incredibly large & spacious studio apartment with high ceilings and great storage. The studio benefits from having a separate bathroom and kitchen. Trebovir Road is only moments from Earls Court Tube. Imperial College is also a short walk for students.

Our China Desk is here to help! If you speak Chinese, you can contact us on WeChat (adxie88)



These particulars, whilst believed to be accurate are set out as a general outline only for guidance and do not constitute any part of an offer or contract. Intending purchasers should not rely on them as statements of representation of fact, but must satisfy themselves by inspection or otherwise as to their accuracy. No person in this firm's employment has the authority to make or give any representation or warranty in respect of the property.

6 Hogarth Road, London, SW5 0PT

Tel: 020 7373 4000 Email: info@pompproperties.com <https://www.pompproperties.com>