

# pomp

properties



## Old Brompton Road

, SW5 9HY

£655,000

This excellent Share of Freehold modern three double bedroom flat in a smart, serviced building in Earls Court, is on the prestigious Old Brompton Road.

Chain free and ready to move in immediately. The property benefits from a great layout and is well maintained throughout.

Redcliffe Close is in The Royal Borough of Kensington and Chelsea and has an onsite porter, communal gardens and excellent transport links; Approx 600 meters from Earls Court Station (District and Piccadilly Lines) and 350 meters from West Brompton (Overground and District Lines).

### Viewing

Please contact our Pomp Properties Office on 020 7373 4000 if you wish to arrange a viewing appointment for this property or require further information.



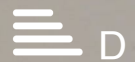
3



1



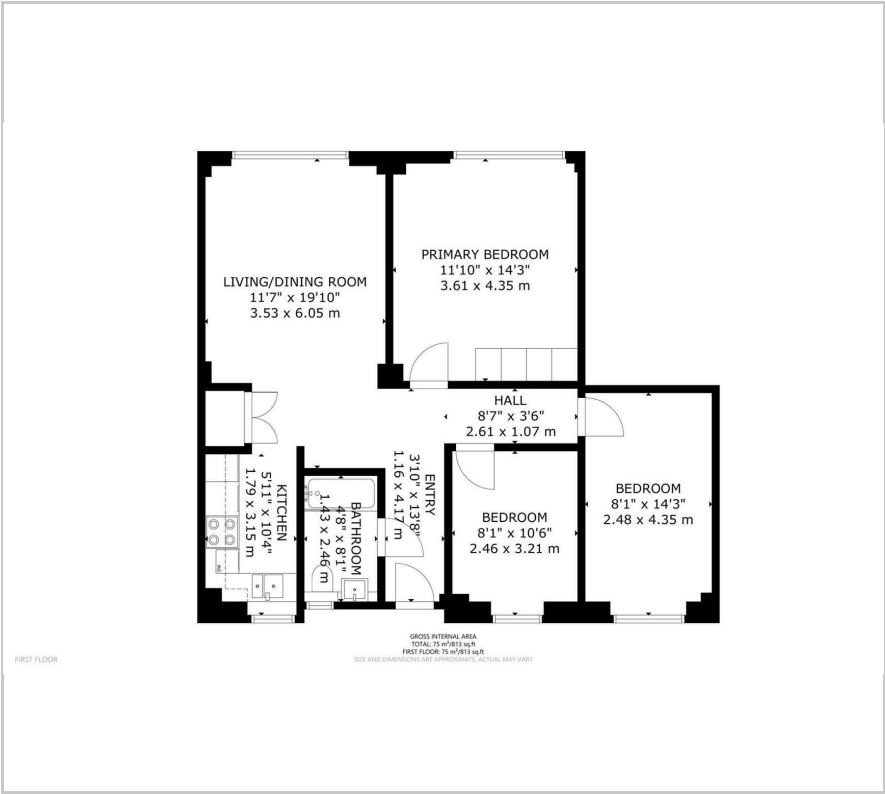
1



D



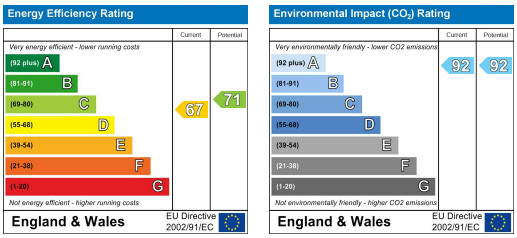
Floor Plan



Area Map



Energy Efficiency Graph



These particulars, whilst believed to be accurate are set out as a general outline only for guidance and do not constitute any part of an offer or contract. Intending purchasers should not rely on them as statements of representation of fact, but must satisfy themselves by inspection or otherwise as to their accuracy. No person in this firm's employment has the authority to make or give any representation or warranty in respect of the property.