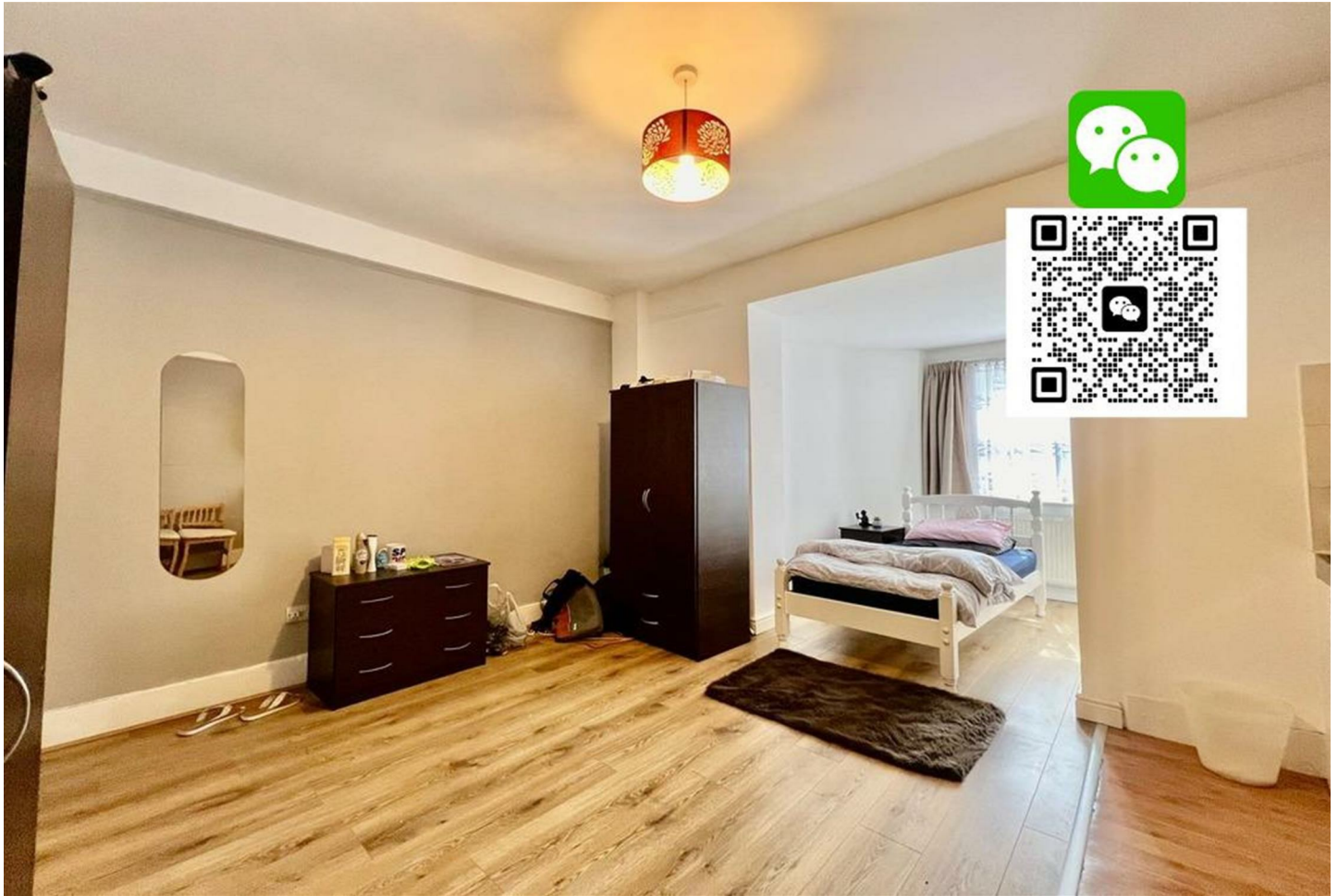


pomp

properties



Cromwell Road, South Kensington

£1,950 Per Month



VIDEO AVAILABLE* *BILLS INCLUDED This spacious, self-contained studio apartment on Cromwell Road in Earls Court, London SW5, offers comfortable living in a prime location. The open-plan kitchen/living area comes fully equipped with a washer/dryer, microwave, and kettle. Additionally, the apartment includes a modern en-suite tiled bathroom.

- Council tax, heating and hot water are covered in the rent.

Conveniently situated just off the vibrant streets of Earls Court, the property is only minutes from a wide array of amenities, including supermarkets, local restaurants, pubs, cafes, and boutique shops. Nearby attractions include Holland Park, the renowned Kensington High Street, Gloucester Road, and South Kensington. For easy transport links, Earls Court Underground Station is just a five-minute walk away, offering access to the District and Piccadilly Lines. Great for Imperial Students as its just a short walk away.

Our China Desk is here to help! If you speak Chinese, you can contact us on WeChat (adxie88)

