

# pomp

properties



Parr's Way, London, W6

£1,100,000



2



2



1

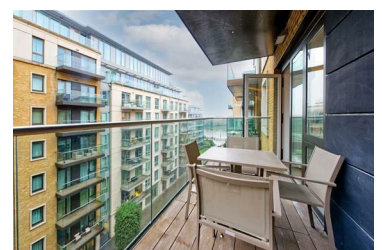


B

Located on the fifth floor of a contemporary riverside development, this bright and spacious two-bedroom apartment spans 873 sq. Ft, offering a stylish and comfortable living space. The open-plan layout features a modern kitchen with high-quality finishes and integrated appliances, seamlessly flowing into a generous living and dining area with access to a private balcony.

Both bedrooms are well-proportioned, with ample storage provided by fitted wardrobes. The primary bedroom includes an en-suite bathroom, while a second bathroom caters to guests or family. Elegant design details and a high standard of finish make this home perfect for modern living.

Residents of the development enjoy access to outstanding amenities, including landscaped communal gardens, a fitness center, and exclusive leisure facilities. The area offers a vibrant mix of cafes, restaurants, and excellent transport links, ensuring both convenience and a relaxed lifestyle.



6 Hogarth Road, London, SW5 0PT

Tel: 020 7373 4000 Email: [enquiries@pompproperties.com](mailto:enquiries@pompproperties.com)