

pomp

properties



Finborough Road, Chelsea

£550,000

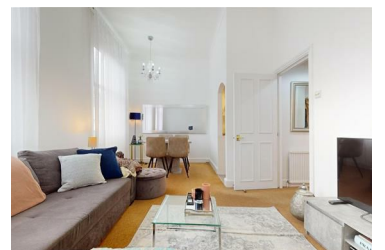
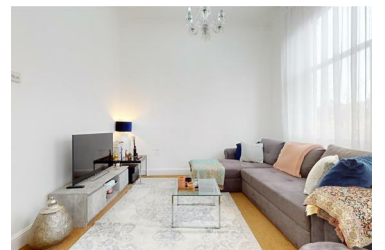


Presenting a charming and spacious one-bedroom flat, featuring a stunning west-facing roof terrace, ideally located just a short walk from Earl's Court Station. This well-presented property is perfectly situated, with West Brompton Underground Station just 0.3 miles away and Earl's Court Underground Station only 0.4 miles away, offering excellent transport links across London.

Inside, you'll find a generously sized reception room that impresses with tall ceilings, elegant period details, and abundant natural light, creating a bright and airy living space. The large double bedroom provides ample built-in storage, ensuring plenty of space for your belongings, while the sleek, modern shower room is stylishly designed. The private roof terrace is perfect for unwinding or entertaining, this west-facing terrace captures the afternoon sun, making it a relaxing outdoor retreat.

Set within easy reach of the vibrant amenities of Earl's Court and West Brompton, this flat offers a perfect blend of period charm, contemporary living, and a prime London location.

- Charming one-bedroom flat with a private west-facing roof terrace.
- Large double bedroom with built-in storage for convenience.
- Ideally located, just 0.3 miles from West Brompton and 0.4 miles from Earl's Court stations.
- Spacious reception room with tall ceilings and elegant period features.
- Modern shower room with direct access to the sun-soaked terrace.
- Close to vibrant amenities, offering a perfect blend of character and modern living.



6 Hogarth Road, London, SW5 0PT

Tel: 020 7373 4000 Email: enquiries@pompproperties.com