

pomp

properties



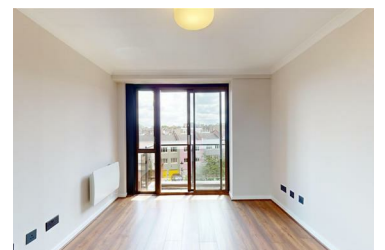
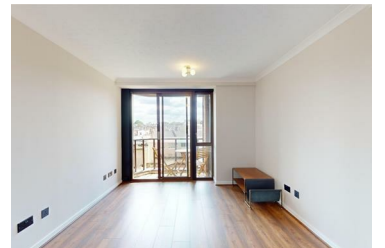
Cromwell Road, Earls Court

£3,250 Per Month



A beautifully refurbished two-bedroom flat located in the vibrant centre of Earls Court. This property features a good proportioned reception area, two spacious bedrooms with plenty of storage, modern bathroom, two balconies overlooking Redfield Lane and a 24-hour concierge service.

Located in The Royal Borough of Kensington and Chelsea, this flat boasts a prime position in the lively area of Earls Court. Local amenities include convenience and grocery stores, cafes, bars, and restaurants. Earls Court Underground Station (Circle, District, and Piccadilly Lines) is just a four-minute walk away, offering excellent transport links. The property is also conveniently situated for access to the M4 and A40/M40 corridor out of London. Additionally, it is ideal for students at Imperial College due to its close proximity.



6 Hogarth Road, London, SW5 0PT

Tel: 020 7373 4000 Email: enquiries@pompproperties.com