



Bildershaw, West Auckland, Bishop Auckland, County Durham,

- TWO BEDROOMS
- APPROX 16 ACRES
- GATED DRIVEWAY
- MODERN DECOR
- CONVERTED CHAPEL
- STABLES & OUTBUILDINGS
- COUNTRYSIDE LOCATION
- EPC GRADE TBC

By Auction £575,000



Bildershaw, West Auckland, Bishop Auckland, County Durham, DL14 9PL

DESCRIPTION

*FOR SALE VIA THE MODERN METHOD OF AUCTION * GUIDE PRICE £575,000 * BIDDING CLOSES (TBA) * RESERVATION FEE APPLIES * FOR BIDDING AND LEGAL INFORMATION PLEASE VISIT [HUNTERS.COM/AUCTIONS](https://www.hunters.com/auctions)

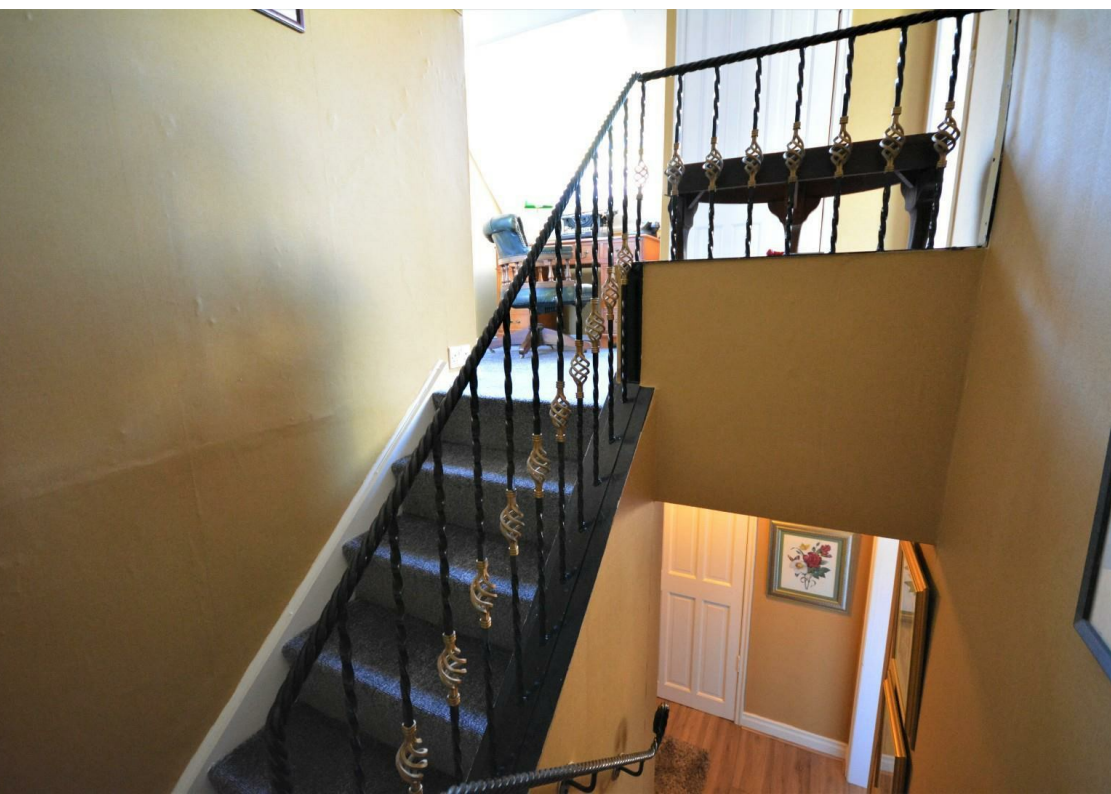
Stonehouse Chapel has been beautifully converted into a unique two bedroomed family home. Complete with a gated driveway, 10 stables, stone outbuildings and approx. 16 acres of land. The converted chapel retains a lot of traditional features and is full of character including a stunning spiral staircase. The conversion was completed to a high standard, including recent upgrades such as the new kitchen and bathroom. Sympathetic thought has been put into each fitting and fixture to ensure the updates paired perfectly with the older characteristics of this stone build. The stables and outbuildings have access to power and water supply as well as an alternative access separate from the home.

Pleasantly positioned within the quiet village Bildershaw near Bishop Auckland, surrounded by neighbouring farms, fields and countryside. Located just off the A68 which leads to the A1(M) and a short distance from local amenities including schools, supermarkets, retail stores, restaurants, cafes and high street shops.

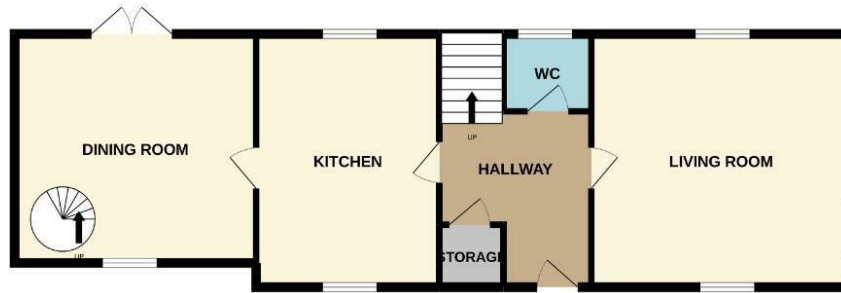
The property has oil central heating and comprises;

Externally this family home has a gated driveway providing off street parking, a separate entrance is available for access to the outbuildings, 10 stables and approx. 16 acres of land.

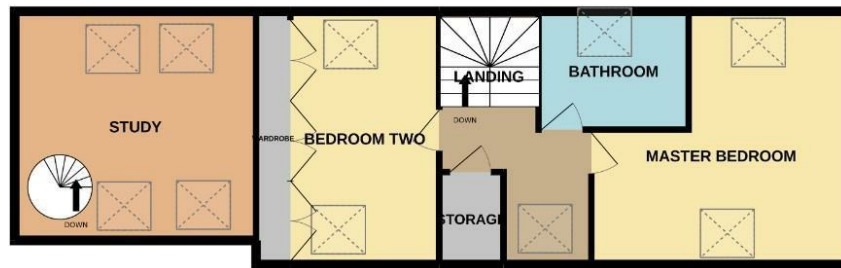




GROUND FLOOR



1ST FLOOR



Whilst every attempt has been made to ensure the accuracy of the floorplan contained here, measurements of doors, windows, rooms and any other items are approximate and no responsibility is taken for any error, omission or mis-statement. This plan is for illustrative purposes only and should be used as such by any prospective purchaser. The services, systems and appliances shown have not been tested and no guarantee as to their operability or efficiency can be given.
Made with Metapix 02022

Viewings

Please contact bishopauckland@hunters.com, if you wish to arrange a viewing appointment for this property or require further information.

Valuations

For a valuation of your property, please email the team with your property details, contact information and the times you are available.

ENERGY PERFORMANCE CERTIFICATE

The energy efficiency rating is a measure of the overall efficacy of a home. The higher the rating the more energy efficient the home is and the lower the fuel bills will be.

Energy Efficiency Rating		
	Current	Potential
Very energy efficient - lower running costs		
(92 plus) A		
(81-91) B		
(69-80) C		
(55-68) D		
(39-54) E		
(21-38) F		
(1-20) G		
Not energy efficient - higher running costs		
England & Wales		EU Directive 2002/91/EC

These particulars are intended to give a fair and reliable description of the property but no responsibility for any inaccuracy or error can be accepted and do not constitute an offer or contract. We have not tested any services or appliances (including central heating if fitted) referred to in these particulars and the purchasers are advised to satisfy themselves as to the working order and condition. If a property is unoccupied at any time there may be reconnection charges for any switched off/disconnected or drained services or appliances - All measurements are approximate.

THINKING OF SELLING? If you are thinking of selling your home or just curious to discover the value of your property, Hunters would be pleased to provide free, no obligation sales and marketing advice. Even if your home is outside the area covered by our local offices we can arrange a Market Appraisal through our national network of Hunters estate agents.