



**HUNTERS**<sup>®</sup>  
HERE TO GET *you* THERE

Main Street Shildon, DL4 1AH

# Main Street Shildon, DL4 1AH

Price £55,000

## PUBLIC NOTICE

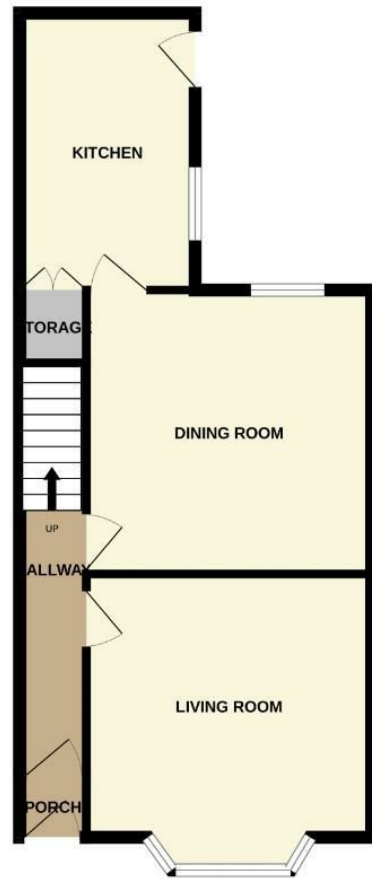
Hunters Estate Agents are now in receipt of an offer for the sum of £45,000 for (Main Street, Shildon, DL4 1AH . Anyone wishing to place an offer on this property should contact Hunters Estate Agent,s, 147-149 Newgate Street, Bishop Auckland, DL14 7EN 01388 311582 before exchange of contracts

Two bedroomed end of terrace property located on Main Street in Shildon, offered with no onward chain. . Situated just a short distance from the town centre providing access to schools, restaurants, cafes, butchers, bakers independent shops, convenience stores and healthcare services. There is an extensive public transport system in the area via both bus and rail, providing easy access to neighbouring towns and villages. Further amenities are available in the neighbouring towns Bishop Auckland and Newton Aycliffe including secondary schools, high street retail stores, leisure centres and supermarkets.

In brief the property comprises; an entrance leading through to the living room, dining room and kitchen to the ground floor. The first floor contains the master bedroom, second bedroom and bathroom. Externally the property has an enclosed yard with gated access into the back lane.

Hunters Bishop Auckland 147-149 Newgate Street, Bishop Auckland, DL14 7EN | 01388 311582  
bishopauckland@hunters.com | www.hunters.com

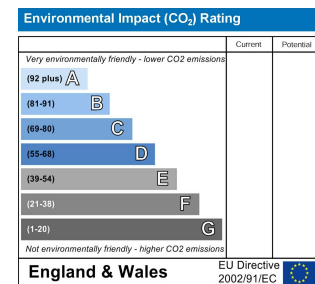
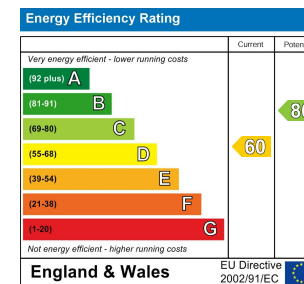
GROUND FLOOR



1ST FLOOR



Whilst every attempt has been made to ensure the accuracy of the floorplan contained here, measurements of doors, windows, rooms and any other items are approximate and no responsibility is taken for any error, omission or mis-statement. This plan is for illustrative purposes only and should be used as such by any prospective purchaser. The services, systems and appliances shown have not been tested and no guarantee as to their operability or efficiency can be given.  
Made with Metroplan C3024



**Living Room**

12'9" x 11'9"

The living room is located to the front of the property with large bay window to the front elevation.

**Dining Room**

12'9" x 11'9"

The second reception room is another good size with window to the rear elevation.

**Kitchen**

12'5" x 7'10"

The kitchen contains a range of wall and base units, work surfaces and sink/drainage unit. Space is available for free standing kitchen appliances.

**Master Bedroom**

16'4" x 11'9"

The master bedroom is a large double bedroom with window to the front elevation.

**Bedroom Two**

12'1" x 9'10"

The second bedroom is another double bedroom with window to the rear elevation.

**Bathroom**

7'10" x 7'6"

The bathroom contains a corner shower cubicle, WC and wash hand basin.

**External**

Externally the property has an enclosed yard with gated access into the back lane.

These particulars are intended to give a fair and reliable description of the property but no responsibility for any inaccuracy or error can be accepted and do not constitute an offer or contract. We have not tested any services or appliances (including central heating if fitted) referred to in these particulars and the purchasers are advised to satisfy themselves as to the working order and condition. If a property is unoccupied at any time there may be reconnection charges for any switched off/disconnected or drained services or appliances - All measurements are approximate. If you are thinking of selling your home or just curious to discover the value of your property, Hunters would be pleased to provide free, no obligation sales and marketing advice. Even if your home is outside the area covered by our local offices we can arrange a Market Appraisal through our national network of Hunters estate agents.





