



5

HUNTERS  
SPECIALISTS

**HUNTERS**<sup>®</sup>

HERE TO GET *you* THERE

6 Surtees Street, Bishop Auckland, DL14 7DH

6 Surtees Street, Bishop Auckland, DL14 7DH

## Offers In The Region Of £58,000

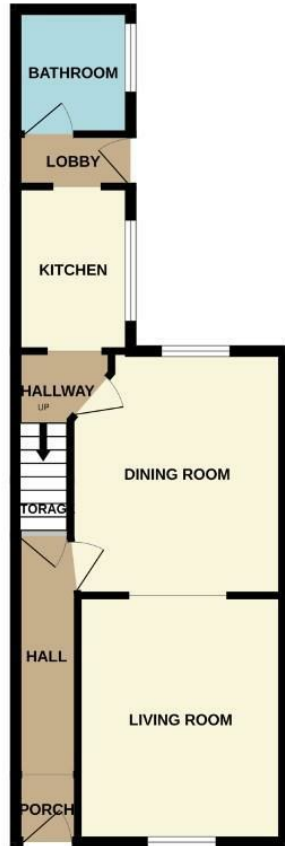
Spacious two bedroomed terrace offered for sale vacant with no onward chain. Perfect for investors and located on Surtees Street, just a short distance from Bishop Auckland's town centre. This location provides access to a range of local amenities including supermarkets, schools, retail stores, popular high street shops, cafes and restaurants. There is an extensive public transport system in the area via both bus and rail, providing regular access to neighbouring towns and villages. The A689 is nearby leading to the A1(M) both North and South ideal for commuters.

In brief this property comprises of a living room, dining room, kitchen and bathroom to the ground floor whilst the first floor contains two double bedrooms. There is on street parking available to the front whilst to the rear is an enclosed yard.

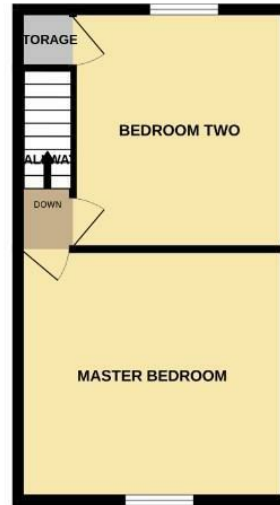
Hunters Bishop Auckland 147-149 Newgate Street, Bishop Auckland, DL14 7EN | 01388 311582  
bishopauckland@hunters.com | www.hunters.com



GROUND FLOOR

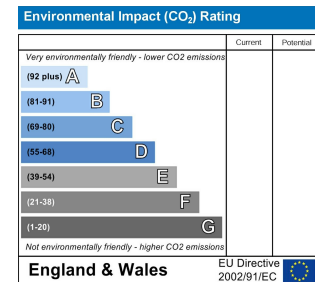
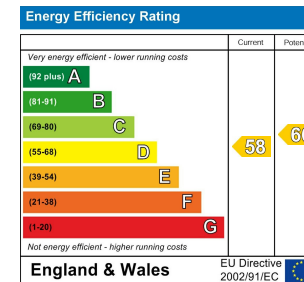


1ST FLOOR



6 SURTEES STREET

While every attempt has been made to ensure the accuracy of the floorplan contained here, measurements of doors, windows, rooms and any other items are approximate and no responsibility is taken for any error, omission or mis-statement. This plan is for illustrative purposes only and should be used as such by any prospective purchaser. The services, systems and appliances shown have not been tested and no guarantee as to their operability or efficiency can be given.  
Made with Metropix ©2023



## LIVING ROOM

The living room is located to the front of the property, with ample space for furniture and window to the front elevation.

## DINING ROOM

The second reception room provides space for a dining table and chairs, further furniture and window to the rear elevation.

## KITCHEN

The kitchen contains a range of wood wall, base and drawer units, complementing work surfaces, tiled splash backs and sink/drain unit. Space is available for free standing kitchen appliances.

## BATHROOM

The bathroom is fitted with a WC, wash hand basin and panelled bath. Opaque window to the side elevation.

## MASTER BEDROOM

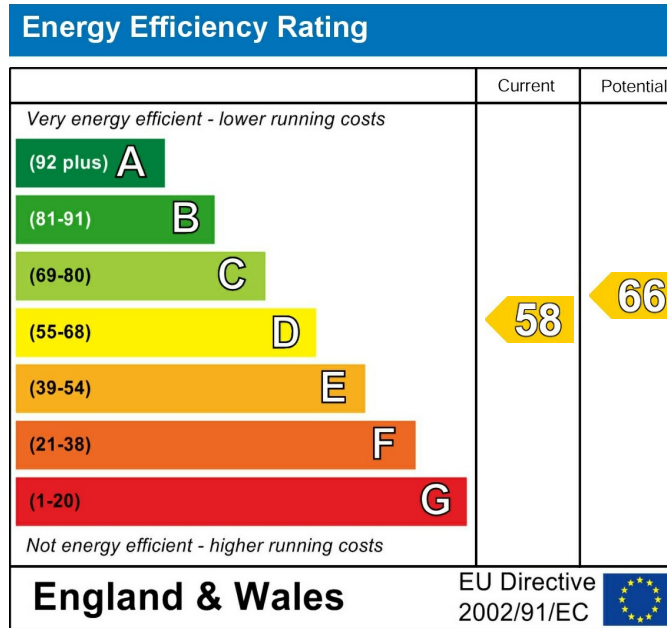
The master bedroom is a double bedroom providing space for a king sized bed and further furniture.

## BEDROOM TWO

The second bedroom is another double bedroom with window to the rear elevation.

## EXTERNAL

To the rear of the property there is an enclosed yard with gated access into the back lane, to the front on street parking is available.



These particulars are intended to give a fair and reliable description of the property but no responsibility for any inaccuracy or error can be accepted and do not constitute an offer or contract. We have not tested any services or appliances (including central heating if fitted) referred to in these particulars and the purchasers are advised to satisfy themselves as to the working order and condition. If a property is unoccupied at any time there may be reconnection charges for any switched off/disconnected or drained services or appliances - All measurements are approximate. If you are thinking of selling your home or just curious to discover the value of your property, Hunters would be pleased to provide free, no obligation sales and marketing advice. Even if your home is outside the area covered by our local offices we can arrange a Market Appraisal through our national network of Hunters estate agents.





